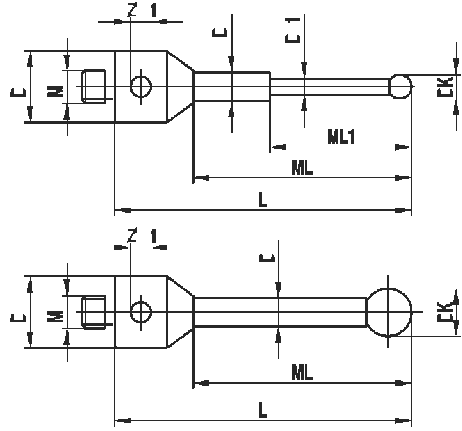


## Carbide styli

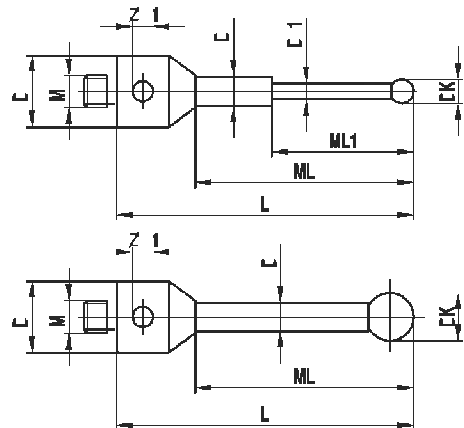
**Thread** M5  
**Material** Titanium base, carbide stem, ruby ball



Pos.	itp Order No	analogue Zeiss	Renishaw Order No	DK	ML1 ML	DG D	L	DS1 DS	EAL B	Weight g
1	TH M5 010 11 020/0,8	-	-	1,0	10,0	11,0	20,0	0,8		6,0
2	TH M5 010 11 030/0,8	-	-	1,0	20,0	11,0	30,0	0,8		6,0
3	TH M5 010 11 020	-	-	1,0	5,0 / 10,0	11,0	20,0	0,8 / 1,0		6,0
4	TH M5 010 11 025	-	-	1,0	5,0 / 15,0	11,0	25,0	0,8 / 1,0		6,0
5	TH M5 010 11 030	-	-	1,0	5,0 / 20,0	11,0	30,0	0,8 / 1,0		6,0
6	TH M5 015 11 030	-	-	1,5	8,0 / 20,0	11,0	30,0	1,0 / 1,5		6,0
7	TH M5 020 11 020	-	-	2,0	10,0	11,0	20,0	1,0		6,0
8	TH M5 020 11 025	-	-	2,0	15,0	11,0	25,0	1,0		6,0
9	TH M5 020 11 030	-	-	2,0	20,0	11,0	30,0	1,5		7,0
10	TH M5 020 11 040	-	-	2,0	30,0	11,0	40,0	1,5		7,0
11	TH M5 030 11 025	602030-9010-000	A-5555-0018	3,0	15,0	11,0	25,0	2,0		4,0
12	TH M5 030 11 033	600342-8020-000	A-5555-0019	3,0	23,5	11,0	33,5	2,0		4,5
13	TH M5 030 11 050	602030-9011-000	A-5555-0020	3,0	40,0	11,0	50,0	2,0		5,2
14	TH M5 030 11 058	600342-8021-000	A-5555-0021	3,0	48,0	11,0	58,0	2,0		5,5
15	TH M5 035 11 058	-	-	3,5	48,0	11,0	58,0	2,0		6,0
16	TH M5 035 11 075	-	-	3,5	65,0	11,0	75,0	2,5		6,5
17	TH M5 035 11 100	-	-	3,5	85,0	11,0	100,0	2,5		7,0
18	TH M5 040 11 030	-	-	4,0	20,0	11,0	30,0	2,0		4,4
19	TH M5 040 11 033	600342-8025-000	A-5555-0022	4,0	23,5	11,0	33,5	2,0		4,5
20	TH M5 040 11 064	602030-9012-000	A-5555-0023	4,0	54,0	11,0	64,0	2,0		5,9
21	TH M5 045 11 053	612030-9661-000	-	4,5	43,0	11,0	53,0	3,5		8,0
22	TH M5 050 11 030	-	-	5,0	20,0	11,0	30,0	3,5		8,0
23	TH M5 050 11 050	602030-9013-000	A-5555-0024	5,0	40,0	11,0	50,0	3,5		9,0
24	TH M5 050 11 053	600342-8022-000	A-5555-0025	5,0	43,0	11,0	53,0	3,5		9,8
25	TH M5 050 11 075	602030-9015-000	A-5555-0026	5,0	65,0	11,0	75,0	3,5		12,5
26	TH M5 050 11 100	-	-	5,0	90,0	11,0	100,0	3,5		15,0
27	TH M5 060 11 054	600342-8026-000	A-5555-0027	6,0	44,0	11,0	54,0	3,5		10,0
28	TH M5 070 11 055	600342-8027-000	A-5555-0028	7,0	45,0	11,0	55,0	3,5		10,0
29	TH M5 080 11 063	600342-8023-000	A-5555-0029	8,0	50,5	11,0	63,5	6,0		24,8
30	TH M5 080 19 063	-	A-5555-0030	8,0	41,5	19,0	63,5	6,0		36,7
31	TH M5 080 11 074	-	A-5555-0031	8,0	61,0	11,0	74,0	6,0		29,5
32	TH M5 080 11 075	602030-9016-000	A-5555-0032	8,0	62,0	11,0	75,0	6,0		30,0
33	TH M5 080 11 100	602030-9017-000	A-5555-0033	8,0	87,0	11,0	100,0	6,0		40,0
34	TH M5 080 11 114	600342-8024-000	A-5555-0034	8,0	101,5	11,0	114,5	6,0		45,8
35	TH M5 080 19 114	600342-8124-000	A-5555-0035	8,0	92,5	19,0	114,5	6,0		57,5
36	TH M5 080 11 150	-	-	8,0	137,0	11,0	150,0	6,0		60,0
37	TH M5 080 11 200	-	-	8,0	175,0	11,0	200,0	6,0		70,0
38	TH M5 090 11 064	-	A-5555-0036	9,0	51,5	11,0	64,5	6,0		26,3
39	TH M5 090 19 064	600342-8128-000	A-5555-0037	9,0	42,5	19,0	64,5	6,0		36,8

**Carbide styli**

**Thread** M5  
**Material** Titanium base, carbide stem, ruby ball



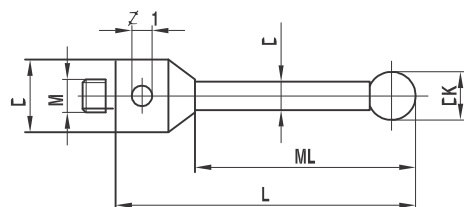
Pos.	itp Order No	analogue Zeiss	Renishaw Order No	DK	ML1 ML	DG D	L	DS1 DS	EAL B	Weight g
40	TH M5 100 11 065	600342-8029-000	A-5555-0038	10,0	52,5	11,0	65,5	6,0		25,8
41	TH M5 100 19 065	-	A-5555-0039	10,0	43,5	19,0	65,5	6,0		37,8
42	TH M5 100 11 118	602030-9018-000	A-5555-0040	10,0	105,0	11,0	118,0	6,0		47,3
43	TH M5 100 11 150	-	-	10,0	137,0	11,0	150,0	6,0		62,0
44	TH M5 100 11 200	-	-	10,0	175,0	11,0	200,0	6,0		75,0
45	TH M5 120 11 065	626115-1200-065	-	12,0	52,5	11,0	65,5	6,0		28,0
46	TH M5 120 11 118	626115-1200-118	-	12,0	105,0	11,0	118,0	6,0		49,0
47	TH M5 120 11 200	-	-	12,0	175,0	11,0	200,0	6,0		76,0
48	TH M5 150 11 065	-	-	15,0	52,5	11,0	65,5	6,0		29,0
49	TH M5 150 11 118	-	-	15,0	105,0	11,0	118,0	6,0		50,0
50	TH M5 150 11 200	-	-	15,0	175,0	11,0	200,0	6,0		78,0

Peg mounted balls. Balls from Ø 12,0mm in ceramic. Special designs on request.

All existing ball materials are available upon request all styli and thread sizes.

**Carbide styli for ScanMax**

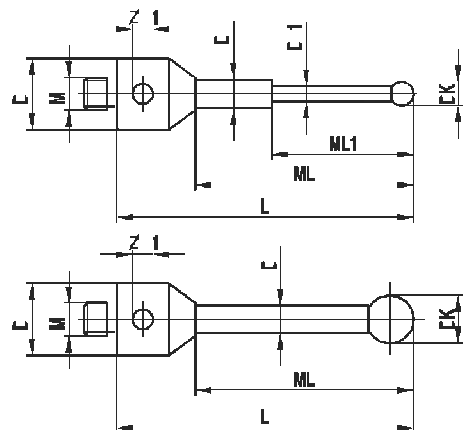
**Thread** M5  
**Material** Titanium base, carbide stem and ball



Pos.	itp Order No	analogue Zeiss	Renishaw Order No	DK	ML1 ML	DG D	L	DS1 DS	EAL B	Weight g
1	TH M5 H30 11 033	000000-1078-483	-	3,0	23,5	11,0	33,5	2,0		4,5
2	TH M5 H50 11 105	000000-1073-344	-	5,0	95,0	11,0	105,0	3,5		15,0
3	TH M5 H80 11 063	612030-9649-000	-	8,0	50,5	11,0	63,5	6,0		25,0

**Carbide styli with silicon nitride ball**

Pos.	itp Order No	analogue Zeiss	Renishaw Order No	DK	ML1 ML	DG D	L	DS1 DS	EAL B	Weight g
1	TH M5 S10 11 020/K	-	-	1,0	5,0 / 10,0	11,0	20,0	0,8 / 1,0		3,5
2	TH M5 S10 11 025/K	-	-	1,0	5,0 / 15,0	11,0	25,0	0,8 / 1,0		3,5
3	TH M5 S10 11 030/K	-	-	1,0	5,0 / 20,0	11,0	30,0	0,8 / 1,0		3,8
4	TH M5 S15 11 030/K	-	-	1,5	8,0 / 20,0	11,0	30,0	1,0 / 1,5		3,5
5	TH M5 S20 11 020/K	-	-	2,0	10,0	11,0	20,0	1,0		3,5
6	TH M5 S20 11 025/K	-	-	2,0	15,0	11,0	25,0	1,0		3,5
7	TH M5 S20 11 030/K	-	-	2,0	20,0	11,0	30,0	1,5		3,8
8	TH M5 S20 11 040/K	-	-	2,0	30,0	11,0	40,0	1,5		4,0
9	TH M5 S30 11 025/K	626115-0303-025	-	3,0	15,0	11,0	25,0	2,0		4,0
10	TH M5 S30 11 033/K	626115-0300-033	-	3,0	23,5	11,0	33,5	2,0		4,5
11	TH M5 S30 11 050/K	626115-0302-050	-	3,0	40,0	11,0	50,0	2,0		5,3
12	TH M5 S30 11 058/K	626115-0300-058	-	3,0	48,0	11,0	58,0	2,0		5,5
13	TH M5 S40 11 033/K	626115-0400-034	-	4,0	23,5	11,0	33,5	2,0		4,5
14	TH M5 S40 11 064/K	626115-0401-064	-	4,0	54,0	11,0	64,0	2,0		5,9
15	TH M5 S50 11 030/K	-	-	5,0	20,0	11,0	30,0	3,5		8,0
16	TH M5 S50 11 050/K	626115-0501-050	-	5,0	40,0	11,0	50,0	3,5		9,0
17	TH M5 S50 11 053/K	626115-0501-053	-	5,0	43,0	11,0	53,0	3,5		9,8
18	TH M5 S50 11 075/K	626115-0500-075	-	5,0	65,0	11,0	75,0	3,5		12,5
19	TH M5 S50 11 100/K	-	-	5,0	90,0	11,0	100,0	3,5		18,0
20	TH M5 S60 11 054/K	-	-	6,0	44,0	11,0	54,0	3,5		10,0
21	TH M5 S70 11 055/K	-	-	7,0	45,0	11,0	55,0	3,5		10,0
22	TH M5 S80 11 063/K	626115-0800-064	-	8,0	50,5	11,0	63,5	6,0		36,6
23	TH M5 S80 11 075/K	626115-0800-075	-	8,0	62,0	11,0	75,0	6,0		29,4
24	TH M5 S80 11 100/K	626115-0801-100	-	8,0	87,0	11,0	100,0	6,0		39,9
25	TH M5 S80 11 114/K	626115-0800-115	-	8,0	101,5	11,0	114,5	6,0		45,7
26	TH M5 S90 11 064/K	-	-	9,0	51,5	11,0	64,5	6,0		26,3
27	TH M5 S100 11 065/K	-	-	10,0	52,5	11,0	65,5	6,0		25,8
28	TH M5 S100 11 118/K	-	-	10,0	105,0	11,0	118,0	6,0		47,3
29	TH M5 S100 11 150/K	-	-	10,0	135	11,0	150,0	6,0		60,0



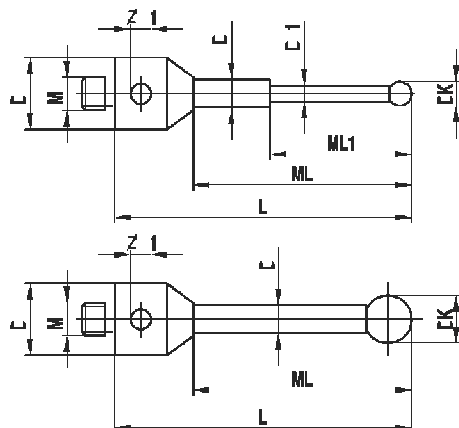
Special designs on request.

All existing ball materials are available upon request for all styli and all thread sizes.

**Carbide styli with silicon nitride ball**

Pos.	itp Order No	analogue Zeiss	Renishaw Order No	DK	ML1 ML	DG D	L	DS1 DS	EAL B	Weight g
1	TH M5 S10 11 020	-	-	1,0	5,0 / 10,0	11,0	20,0	0,8 / 1,0		3,5
2	TH M5 S10 11 025	-	-	1,0	5,0 / 15,0	11,0	25,0	0,8 / 1,0		3,5
3	TH M5 S10 11 030	-	-	1,0	5,0 / 20,0	11,0	30,0	0,8 / 1,0		3,8
4	TH M5 S15 11 030	-	-	1,5	8,0 / 20,0	11,0	30,0	1,0 / 1,5		3,5
5	TH M5 S20 11 020	-	-	2,0	10,0	11,0	20,0	1,0		3,5
6	TH M5 S20 11 025	-	-	2,0	15,0	11,0	25,0	1,0		3,5
7	TH M5 S20 11 030	-	-	2,0	20,0	11,0	30,0	1,5		3,8
8	TH M5 S20 11 040	-	-	2,0	30,0	11,0	40,0	1,5		4,0
9	TH M5 S30 11 025	-	-	3,0	15,0	11,0	25,0	2,0		4,0
10	TH M5 S30 11 033	-	-	3,0	23,5	11,0	33,5	2,0		4,5
11	TH M5 S30 11 050	-	-	3,0	40,0	11,0	50,0	2,0		5,3
12	TH M5 S30 11 058	-	-	3,0	48,0	11,0	58,0	2,0		5,5
13	TH M5 S40 11 033	-	-	4,0	23,5	11,0	33,5	2,0		4,5
14	TH M5 S40 11 064	-	-	4,0	54,0	11,0	64,0	2,0		5,9
15	TH M5 S50 11 030	-	-	5,0	20,0	11,0	30,0	3,5		8,0
16	TH M5 S50 11 050	-	-	5,0	40,0	11,0	50,0	3,5		9,0
17	TH M5 S50 11 053	-	-	5,0	43,0	11,0	53,0	3,5		9,8
18	TH M5 S50 11 075	-	-	5,0	65,0	11,0	75,0	3,5		12,5
19	TH M5 S50 11 100	-	-	5,0	90,0	11,0	100,0	3,5		18,0
20	TH M5 S60 11 054	-	-	6,0	44,0	11,0	54,0	3,5		10,0

**Thread** M5  
**Material** Titanium base, carbide stem, silicon nitride ball, peg mounted for higher stiffness



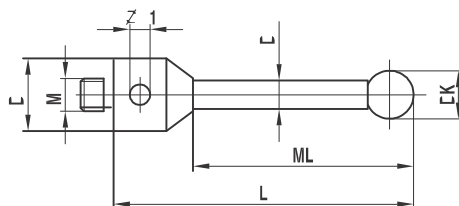
Special designs on request.

All existing ball materials are available upon request for all styli and all thread sizes.

**Reference styli (red dot)**

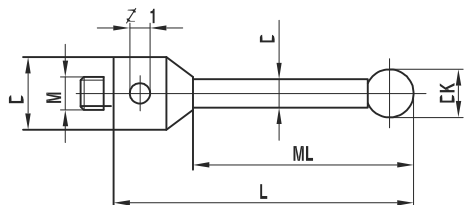
Pos.	itp Order No	analogue Zeiss	Renishaw Order No	DK	ML1 ML	DG D	L	DS1 DS	EAL B	Weight g
1	TH M5 R80 11 063	600342-8023-010	-	8,0	50,5	11,0	63,5	6,0		24,8

**Thread** M5  
**Material** Base and stem high-strength stainless steel, ruby ball



**High rigidity styli**

**Thread** M5  
**Material** Base and stem high-strength stainless steel, ruby ball, manufactured in one-piece, hardened



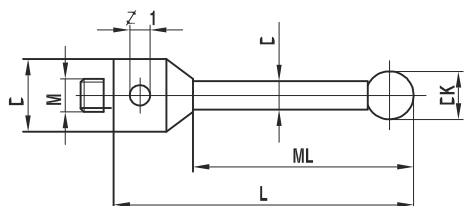
Pos.	itp Order No	analogue Zeiss	Renishaw Order No	DK	ML1 ML	DG D	L	DS1 DS	EAL B	Weight g
1	TI M5 030 11 033	-	-	3,0	23,5	11,0	33,5	2,0		6,0
2	TI M5 030 11 050	-	-	3,0	40,0	11,0	50,0	2,0		6,5
3	TI M5 050 11 050	-	-	5,0	40,0	11,0	50,0	3,5		8,7
4	TI M5 050 11 053	-	-	5,0	43,0	11,0	53,0	3,5		8,9
5	TI M5 050 11 075	-	-	5,0	65,0	11,0	75,0	3,5		10,2
6	TI M5 080 11 063	-	-	8,0	50,5	11,0	63,5	6,0		17,5
7	TI M5 080 11 075	-	-	8,0	62,0	11,0	75,0	6,0		21,0
8	TI M5 080 11 100	-	-	8,0	87,0	11,0	100,0	6,0		29,0
9	TI M5 080 11 114	-	-	8,0	101,5	11,0	114,5	6,0		33,0

Glued balls. Special designs on request.

All existing ball materials are available upon request for all styli and all thread sizes.

**High rigidity styli with silicon nitride ball**

**Thread** M5  
**Material** Base and stem high-strength stainless steel, silicon nitride ball, manufactured in one-piece, hardened



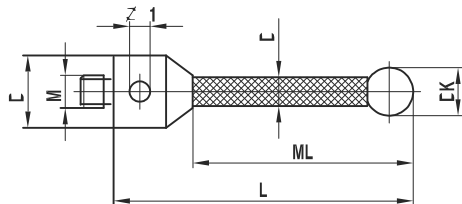
Pos.	itp Order No	analogue Zeiss	Renishaw Order No	DK	ML1 ML	DG D	L	DS1 DS	EAL B	Weight g
1	TI M5 S30 11 033	-	-	3,0	23,5	11,0	33,5	2,0		6,0
2	TI M5 S30 11 050	-	-	3,0	40,0	11,0	50,0	2,0		6,5
3	TI M5 S50 11 050	-	-	5,0	40,0	11,0	50,0	3,5		8,7
4	TI M5 S50 11 053	-	-	5,0	43,0	11,0	53,0	3,5		8,9
5	TI M5 S50 11 075	-	-	5,0	65,0	11,0	75,0	3,5		10,2
6	TI M5 S80 11 063	-	-	8,0	50,5	11,0	63,5	6,0		17,5
7	TI M5 S80 11 075	-	-	8,0	62,0	11,0	75,0	6,0		21,0
8	TI M5 S80 11 100	-	-	8,0	87,0	11,0	100,0	6,0		29,0
9	TI M5 S80 11 114	-	-	8,0	101,5	11,0	114,5	6,0		33,0

Glued balls. Special designs on request.

All existing ball materials are available upon request for all styli and all thread sizes.

**Carbon fiber styli, thermostable**

**Thread** M5  
**Material** Titanium base, carbon fibre stem thermostable, ruby ball



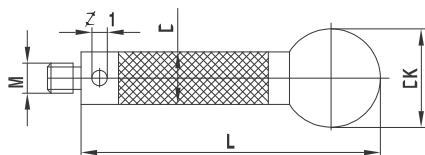
Pos.	itp Order No	analogue Zeiss	Renishaw Order No	DK	ML1 ML	DG D	L	DS1 DS	EAL B	Weight g
1	TC M5 030 11 025	626105-0300-025	A-5555-1916	3,0	15,0	11,0	25,0	2,0		4,0
2	TC M5 030 11 033	626105-0300-033	A-5555-1847	3,0	23,5	11,0	33,5	2,0		4,2
3	TC M5 030 11 050	626105-0300-050	A-5555-0730	3,0	40,0	11,0	50,0	2,0		4,5
4	TC M5 030 11 058	626105-0300-058	-	3,0	48,0	11,0	58,0	2,0		4,9
5	TC M5 040 11 033	626105-0400-033	A-5555-1917	4,0	23,5	11,0	33,5	2,0		4,2
6	TC M5 040 11 064	626105-0400-064	A-5555-0731	4,0	54,0	11,0	64,0	2,0		4,6
7	TC M5 050 11 050	626105-0510-050	A-5555-0732	5,0	40,0	11,0	50,0	3,5		4,8
8	TC M5 050 11 053	-	-	5,0	43,0	11,0	53,0	3,5		4,9
9	TC M5 050 11 075	626105-0510-075	A-5555-0735	5,0	65,0	11,0	75,0	3,5		5,0
10	TC M5 050 11 100	626105-0510-100	A-5555-0410	5,0	90,0	11,0	100,0	3,5		5,4
11	TC M5 060 11 054	626105-0610-054	A-5555-0733	6,0	44,0	11,0	54,0	3,5		4,9
12	TC M5 070 11 055	626105-0710-055	A-5555-0734	7,0	45,0	11,0	55,0	3,5		4,9
13	TC M5 080 11 063	626105-0820-063	-	8,0	50,5	11,0	63,5	6,0		7,0
14	TC M5 080 11 075	626105-0820-075	-	8,0	62,0	11,0	75,0	6,0		7,3
15	TC M5 080 11 100	626105-0820-100	A-5555-1918	8,0	87,0	11,0	100,0	6,0		7,5
16	TC M5 080 11 114	626105-0820-114	-	8,0	101,5	11,0	114,5	6,0		9,5
17	TC M5 080 11 150	626105-0820-150	A-5555-9361	8,0	137,0	11,0	150,0	6,0		11,0
18	TC M5 080 11 200	626105-0820-200	A-5555-1112	8,0	187,0	11,0	200,0	6,0		13,0
19	TC M5 090 11 064	-	-	9,0	51,5	11,0	64,5	6,0		7,2
20	TC M5 100 11 065	626105-1020-065	-	10,0	52,5	11,0	65,5	6,0		8,0
21	TC M5 100 11 118	626105-1020-118	-	10,0	105,0	11,0	118,0	6,0		14,5
22	TC M5 100 11 150	626105-1020-150	A-5555-0643	10,0	137,0	11,0	150,0	6,0		16,0
23	TC M5 100 11 200	626105-1020-200	-	10,0	187,0	11,0	200,0	6,0		19,0

Peg mounted balls. Thermostable carbon fiber, E-module of approximately 450 GPa. Special designs on request.

All existing ball materials are available upon request for all styli and all thread sizes.

### Carbon fibre styli thermostable

**Thread** M5  
**Material** Titanium base, carbon fibre stem thermostable, ceramic ball



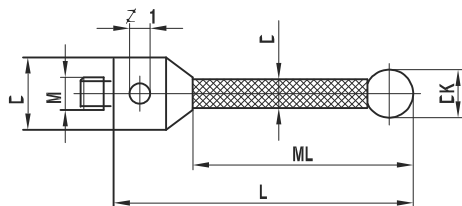
Pos.	itp Order No	analogue Zeiss	Renishaw Order No	DK	ML1 ML	DG D	L	DS1 DS	EAL B	Weight g
1	TC M5 150 11 200	-	-	15,0		11,0	200,0			35,0
2	TC M5 150 11 300	-	-	15,0		11,0	300,0			42,0
3	TC M5 150 11 400	-	-	15,0		11,0	400,0			48,0
4	TC M5 150 11 500	-	-	15,0		11,0	500,0			55,0
5	TC M5 180 11 200	-	-	18,0		11,0	200,0			42,0
6	TC M5 180 11 300	-	-	18,0		11,0	300,0			49,0
7	TC M5 180 11 400	-	-	18,0		11,0	400,0			55,0
8	TC M5 180 11 500	-	-	18,0		11,0	500,0			62,0
9	TC M5 200 11 200	-	-	20,0		11,0	200,0			46,0
10	TC M5 200 11 300	-	-	20,0		11,0	300,0			53,0
11	TC M5 200 11 400	-	-	20,0		11,0	400,0			59,0
12	TC M5 200 11 500	-	-	20,0		11,0	500,0			66,0
13	TC M5 250 11 200	-	-	25,0		11,0	200,0			62,0
14	TC M5 250 11 300	-	-	25,0		11,0	300,0			69,0
15	TC M5 250 11 400	-	-	25,0		11,0	400,0			75,0
16	TC M5 250 11 500	-	-	25,0		11,0	500,0			82,0

Glued balls. Maximum length of approximately 950mm. Thermostable carbon fibre, E-module of approximately 450 GPa. Special designs on request.

All existing ball materials (except for ruby) are available upon request for all styli and all thread sizes.

### Carbon fibre styli thermostable with silicon nitride ball

**Thread** M5  
**Material** Titanium base, carbon fibre stem thermostable, silicon nitride ball\*



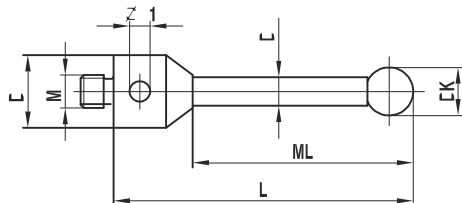
Pos.	itp Order No	analogue Zeiss	Renishaw Order No	DK	ML1 ML	DG D	L	DS1 DS	EAL B	Weight g
1	TC M5 S30 11 025	-	-	3,0	15,0	11,0	25,0	2,0		4,0
2	TC M5 S30 11 033	626105-0301-033	-	3,0	23,5	11,0	33,5	2,0		4,2
3	TC M5 S30 11 050	-	-	3,0	40,0	11,0	50,0	2,0		4,5
4	TC M5 S30 11 058	626103-0301-058	-	3,0	48,0	11,0	58,0	2,0		4,9
5	TC M5 S40 11 033	-	-	4,0	23,5	11,0	33,5	2,0		4,2
6	TC M5 S40 11 064	-	-	4,0	54,0	11,0	64,0	2,0		4,6
7	TC M5 S50 11 050	626105-0511-050	-	5,0	40,0	11,0	50,0	3,5		4,8
8	TC M5 S50 11 053	-	-	5,0	43,0	11,0	53,0	3,5		4,9
9	TC M5 S50 11 075	626105-0511-075	-	5,0	65,0	11,0	75,0	3,5		5,0
10	TC M5 S50 11 100	626105-0511-100	-	5,0	90,0	11,0	100,0	3,5		5,4
11	TC M5 S60 11 054	-	-	6,0	44,0	11,0	54,0	3,5		4,9
12	TC M5 S70 11 055	-	-	7,0	45,0	11,0	55,0	3,5		4,9
13	TC M5 S80 11 063	626105-0821-063	-	8,0	50,5	11,0	63,5	6,0		7,0
14	TC M5 S80 11 075	-	-	8,0	62,0	11,0	75,0	6,0		7,3
15	TC M5 S80 11 100	626105-0821-100	-	8,0	87,0	11,0	100,0	6,0		7,5
16	TC M5 S80 11 114	626105-0821-114	-	8,0	101,5	11,0	114,5	6,0		9,5
17	TC M5 S80 11 150	626105-0821-150	-	8,0	137,0	11,0	150,0	6,0		11,0
18	TC M5 S80 11 200	626105-0821-200	-	8,0	187,0	11,0	200,0	6,0		13,0
19	TC M5 S90 11 064	-	-	9,0	51,5	11,0	64,5	6,0		7,2
20	TC M5 S100 11 065	-	-	10,0	52,5	11,0	65,5	6,0		8,0
21	TC M5 S100 11 118	626105-1021-118	-	10,0	105,0	11,0	118,0	6,0		14,5
22	TC M5 S100 11 150	626105-1021-150	-	10,0	137,0	11,0	150,0	6,0		16,0
23	TC M5 S100 11 200	626105-1021-200	-	10,0	187,0	11,0	200,0	6,0		19,0

\*Peg mounted balls up to ball-Ø 6,0mm. Thermostable carbon fibre, E-module of approximately 450 GPa. Special designs on request.

All existing ball materials are available upon request for all styli and all thread sizes.

### Ceramic styli

**Thread** M5  
**Material** Titanium base, ceramic stem, ruby ball



Pos.	itp Order No	analogue Zeiss	Renishaw Order No	DK	ML1 ML	DG D	L	DS1 DS	EAL B	Weight g
1	TK M5 050 11 053	600342-8013-000	A-5555-0041	5,0	43,0	11,0	53,0	3,5		4,6
2	TK M5 060 11 054	600342-8016-000	A-5555-0042	6,0	44,0	11,0	54,0	3,5		4,7
3	TK M5 070 11 055	600342-8017-000	A-5555-0043	7,0	45,0	11,0	55,0	3,5		5,0
4	TK M5 080 11 063	600342-8014-000	A-5555-0044	8,0	50,5	11,0	63,5	6,0		8,3
5	TK M5 080 19 063	-	A-5003-0824	8,0	41,5	19,0	63,5	6,0		33,0
6	TK M5 080 11 114	600342-8015-000	A-5555-0050	8,0	101,5	11,0	114,5	6,0		11,8
7	TK M5 080 19 114	-	A-5555-0051	8,0	92,5	19,0	114,5	6,0		38,0
8	TK M5 090 11 064	600342-8018-000	A-5555-0045	9,0	51,5	11,0	64,5	6,0		8,4
9	TK M5 090 19 064	-	A-5003-0826	9,0	42,5	19,0	64,5	6,0		21,0
10	TK M5 100 11 065	600342-8019-000	A-5555-0047	10,0	52,5	11,0	65,5	6,0		9,0
11	TK M5 100 19 065	-	A-5003-0827	10,0	43,5	19,0	65,5	6,0		38,0

Glued balls. Special designs on request.

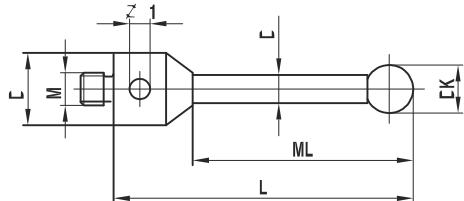
All existing ball materials are available upon request for all styli and all thread sizes.



### Ceramic styli with silicon nitride ball

Pos.	itp Order No	analogue Zeiss	Renishaw Order No	DK	ML1 ML	DG D	L	DS1 DS	EAL B	Weight g
1	TK M5 S50 11 053	-	-	5,0	43,0	11,0	53,0	3,5		4,6
2	TK M5 S60 11 054	-	-	6,0	44,0	11,0	54,0	3,5		4,7
3	TK M5 S70 11 055	-	-	7,0	45,0	11,0	55,0	3,5		5,0
4	TK M5 S80 11 063	-	-	8,0	50,5	11,0	63,5	6,0		8,3
5	TK M5 S80 11 114	-	-	8,0	101,5	11,0	114,5	6,0		11,8
6	TK M5 S90 11 064	-	-	9,0	51,5	11,0	64,5	6,0		8,4
7	TK M5 S100 11 065	-	-	10,0	52,5	11,0	65,5	6,0		9,0

**Thread** M5  
**Material** Titanium base, ceramic stem, silicon nitride ball



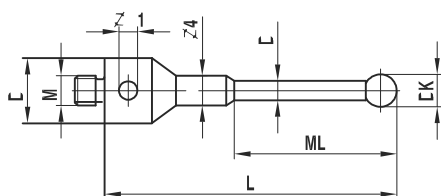
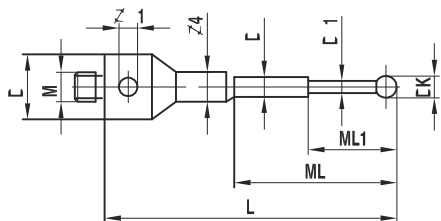
Glued balls. Special designs on request.

All existing ball materials are available upon request for all styli and all thread sizes.

### Micro ball styli, stepped stem

Pos.	itp Order No	analogue Zeiss	Renishaw Order No	DK	ML1 ML	DG D	L	DS1 DS	EAL B	Weight g
1	FH M5 002 11 032	-	-	0,2	2,3/12,0	11,0	32,0	0,18/1,0		6,5
2	FH M5 0025 11 032	-	-	0,25	2,3/12,0	11,0	32,0	0,18/1,0		6,5
3	FH M5 003 11 032	-	-	0,3	2,3/12,0	11,0	32,0	0,2/1,0		6,5
4	FH M5 005 11 032	-	-	0,5	2,5/12,0	11,0	32,0	0,3/1,0		6,5
5	FH M5 006 11 032	-	-	0,6	4,6/12,0	11,0	32,0	0,4/1,0		6,5
6	FH M5 008 11 032	602030-8060-000	A-5555-0052	0,8	4,8/12,0	11,0	32,0	0,6/1,0		6,8
7	FH M5 010 11 032	602030-8061-000	A-5555-0053	1,0	5,0/12,0	11,0	32,0	0,8/1,0		6,8
8	FH M5 013 11 032	602030-8062-000	A-5555-0054	1,35	12,0	11,0	32,0	1,0		6,9
9	FH M5 013 11 044	602030-8063-000	A-5555-0055	1,35	19,0	11,0	44,0	1,0		7,5
10	FH M5 015 11 032	602030-8064-000	A-5555-0056	1,5	12,0	11,0	32,0	1,0		6,5
11	FH M5 015 11 044	602030-8065-000	A-5555-0057	1,5	19,0	11,0	44,0	1,0		7,5
12	FH M5 020 11 032	602030-8066-000	A-5555-0058	2,0	12,0	11,0	32,0	1,5		7,3
13	FH M5 020 11 044	602030-8067-000	A-5555-0059	2,0	19,0	11,0	44,0	1,5		8,0
14	FH M5 020 11 058	602030-8068-000	A-5555-0060	2,0	33,0	11,0	58,0	1,5		8,0
15	FH M5 025 11 032	602030-8069-000	A-5555-0061	2,5	12,0	11,0	32,0	1,5		7,3
16	FH M5 025 11 044	602030-8070-000	A-5555-0062	2,5	19,0	11,0	44,0	1,5		8,0
17	FH M5 025 11 058	602030-8071-000	A-5555-0063	2,5	33,0	11,0	58,0	1,5		8,0

**Thread** M5  
**Material** Stainless steel base, carbide stem, ruby ball

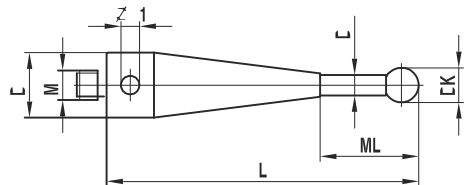


Peg mounted balls, except for ball-Ø 0,2mm - 0,3mm. Special designs on request.

All existing ball materials are available upon request for all styli and all thread sizes.

### Micro ball styli

**Thread** M5  
**Material** Conic titanium base, carbide stem, ruby ball



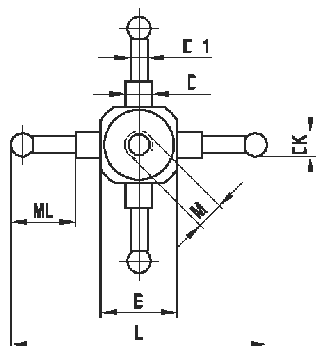
Pos.	itp Order No	analogue Zeiss	Renishaw Order No	DK	ML1 ML	DG D	L	DS1 DS	EAL B	Weight g
1	FT M5 010 11 055	602030-9019-000	A-5555-0064	1,0	5,0	11,0	55,0	0,8		11,9
2	FT M5 015 11 055	602030-9020-000	A-5555-0065	1,5	5,0	11,0	55,0	1,0		11,9
3	FT M5 020 11 055	602030-9021-000	A-5555-0066	2,0	5,0	11,0	55,0	1,5		11,9
4	FT M5 025 11 055	-	A-5555-0067	2,5	5,0	11,0	55,0	2,0		11,9
5	FT M5 035 11 055	602030-9023-000	A-5555-0068	3,5	10,0	11,0	55,0	2,5		11,9

Peg mounted balls. Special designs on request.

All existing ball materials are available upon request for all styli and all thread sizes.

### Cube Star

**Thread** M5  
**Material** Titanium cube base, carbide stems, ruby balls



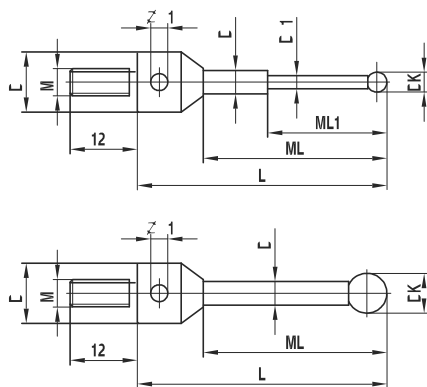
Pos.	itp Order No	analogue Zeiss	Renishaw Order No	DK	ML1 ML	DG D	L	DS1 DS	EAL B	Weight g
1	WT M5 010 15 045	-	A-5555-0069	1,0	7,0		45,0	0,8 / 2,0	15,0	17,3
2	WT M5 015 15 045	602030-9025-000	A-5555-0070	1,5	7,5		45,0	1,0 / 2,0	15,0	17,3
3	WT M5 020 15 045	-	A-5555-0071	2,0	7,5		45,0	1,5 / 2,0	15,0	17,3
4	WT M5 025 15 045	602030-9027-000	A-5555-0072	2,5	8,0		45,0	1,5 / 2,0	15,0	17,3
5	WT M5 035 15 045	-	A-5555-0073	3,5	15,0		45,0	2,0	15,0	17,3

Peg mounted balls. Special designs on request.

All existing ball materials are available upon request for all styli and all thread sizes.

### Long threaded styli, thread length 12,5mm

**Thread** M5  
**Material** Stainless steel base, carbide stem, ruby ball



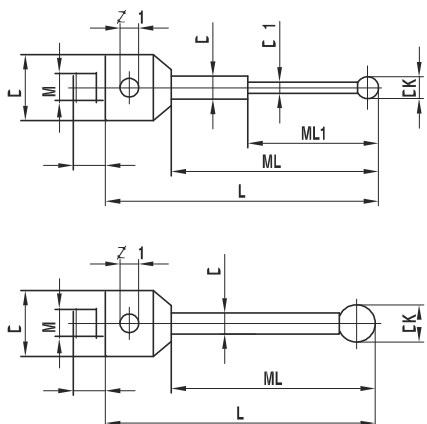
Pos.	itp Order No	analogue Zeiss	Renishaw Order No	DK	ML1 ML	DG D	L	DS1 DS	EAL B	Weight g
1	LH M5 003 11 021	600342-8250-000	A-5555-0084	0,3	2,3 / 12,8	11,0	21,8	0,2 / 1,0		6,0
2	LH M5 005 11 022	600342-8251-000	A-5555-0085	0,5	2,5 / 13,0	11,0	22,0	0,3 / 1,0		6,0
3	LH M5 006 11 022	600342-8252-000	A-5555-0086	0,6	4,6 / 13,1	11,0	22,1	0,4 / 1,0		6,0
4	LH M5 008 11 022	600342-8253-000	A-5555-0087	0,8	4,8 / 13,3	11,0	22,3	0,6 / 1,0		6,0
5	LH M5 010 11 022	600342-8254-000	A-5555-0088	1,0	5,0 / 13,5	11,0	22,5	0,8 / 1,0		6,0
6	LH M5 013 11 032	600342-8200-000	A-5555-0078	1,35	23,85	11,0	32,85	1,0		6,0
7	LH M5 015 11 033	600342-8201-000	A-5555-0079	1,5	24,0	11,0	33,0	1,0		7,0
8	LH M5 020 11 033	600342-8202-000	A-5555-0080	2,0	24,5	11,0	33,5	1,5		7,0
9	LH M5 025 11 034	600342-8203-000	A-5555-0081	2,5	25,0	11,0	34,0	1,5		7,0
10	LH M5 030 11 025	-	-	3,0	16,5	11,0	25,5	2,0		7,0
11	LH M5 030 19 034	600342-8221-000	A-5555-0082	3,0	16,5	19,0	34,5	2,0		20,0
12	LH M5 050 11 034	-	-	5,0	25,5	11,0	34,5	3,5		9,0
13	LH M5 050 19 043	600342-8222-000	A-5555-0083	5,0	25,5	19,0	43,5	3,5		23,0

Peg mounted balls, except for ball-Ø 0,3mm. Thread length 20,0mm for body-Ø 19,0mm. Special designs on request.

All existing ball materials are available upon request for all styli and all thread sizes.

### Long threaded styli, thread length 5,0mm

**Thread** M5  
**Material** Stainless steel base, carbide stem, ruby ball



Pos.	itp Order No	analogue Zeiss	Renishaw Order No	DK	ML1 ML	DG D	L	DS1 DS	EAL B	Weight g
1	NH M5 003 11 021	626115-0030-022	-	0,3	2,3/12,8	11,0	21,8	0,2/1,0		6,0
2	NH M5 005 11 022	626115-0050-022	-	0,5	2,5/13,0	11,0	22,0	0,3/1,0		6,0
3	NH M5 006 11 022	626115-0060-022	-	0,6	4,6/13,1	11,0	22,1	0,4/1,0		6,0
4	NH M5 008 11 022	626115-0080-022	-	0,8	4,8/13,3	11,0	22,3	0,6/1,0		6,0
5	NH M5 010 11 022	626115-0100-022	-	1,0	5,0/13,5	11,0	22,5	0,8/1,0		6,0
6	NH M5 013 11 032	626115-0140-033	-	1,35	23,85	11,0	32,85	1,0		6,0
7	NH M5 015 11 033	626115-0150-033	-	1,5	24,0	11,0	33,0	1,0		7,0
8	NH M5 K15 11 033	-	-	1,5	7,0/24,0	11,0	33,0	1,0/1,5		7,0
9	NH M5 020 10 033	-	-	2,0	24,5	11,0	33,5	1,0		7,0
10	NH M5 020 11 033	602030-8066-000	-	2,0	24,5	11,0	33,5	1,5		7,0
11	NH M5 025 10 034	-	-	2,5	25,0	11,0	34,0	1,0		7,0
12	NH M5 025 11 034	602030-8069-000	-	2,5	25,0	11,0	34,0	1,5		7,0
13	NH M5 030 11 025	-	-	3,0	16,5	11,0	25,5	2,0		9,0
14	NH M5 050 11 034	-	-	5,0	25,5	11,0	34,5	3,5		9,0

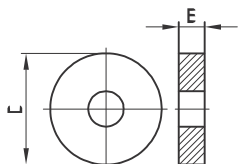
Peg mounted balls, except for ball-Ø 0,3mm. Special designs on request.

All existing ball materials are available upon request for all styli and all thread sizes.

### Flat washer for star styli

Pos.	itp Order No	analogue Zeiss	Renishaw Order No	DK	ML1 ML	DG D	L	DS1 DS	EAL B	Weight g
1	KI M5 000 11 015	600341-0140-000	A-5555-0089			11,0			1,5	1,0
2	KI M5 000 19 020	600341-0141-000	A-5555-0090			19,0			2,0	4,0

**Thread** M5  
**Material** Stainless steel

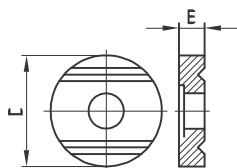


Special designs on request.  
Has to be used with long threaded styli only.

### Grooved washer for star styli

Pos.	itp Order No	analogue Zeiss	Renishaw Order No	DK	ML1 ML	DG D	L	DS1 DS	EAL B	Weight g
1	NI M5 000 11 020	600341-0150-000	A-5555-0091			11,0			2,0	1,0
2	NI M5 000 19 040	600341-0151-000	A-5555-0092			19,0			4,0	7,0

**Thread** M5  
**Material** Stainless steel

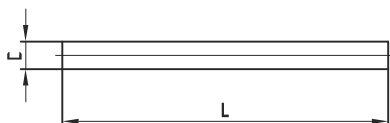


Special designs on request.  
Has to be used with long threaded styli only.

### Carbide pin for star styli

Pos.	itp Order No	analogue Zeiss	Renishaw Order No	DK	ML1 ML	DG D	L	DS1 DS	EAL B	Weight g
1	SH M5 000 10 010	600341-0520-000	A-5555-0093			1,0	10,0			1,0
2	SH M5 000 15 010	600341-0521-000	A-5555-0094			1,5	10,0			1,0
3	SH M5 000 20 018	600341-0522-000	A-5555-0095			2,0	18,0			1,0
4	SH M5 000 35 018	600341-0523-000	A-5555-0096			3,5	18,0			3,0

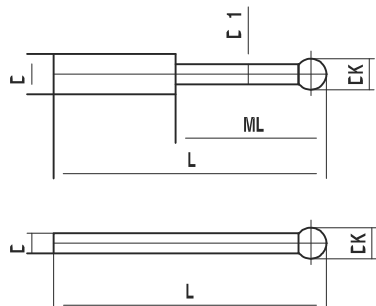
**Thread** M5  
**Material** Carbide



Special designs on request.  
Has to be used with long threaded styli only.

**Styli for holder**

**Thread** M5  
**Material** Carbide stem, ruby ball



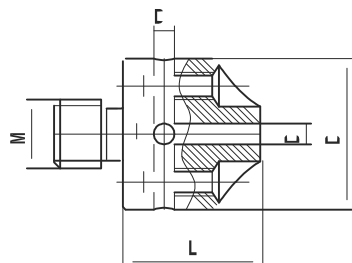
Pos.	itp Order No	analogue Zeiss	Renishaw Order No	DK	ML1 ML	DG D	L	DS1 DS	EAL B	Weight g
1	KT M5 002 01 015	-	-	0,2	2,3		15,2	0,18 / 1,0		1,0
2	KT M5 0025 01 015	-	-	0,25	2,35		15,25	0,18 / 1,0		1,0
3	KT M5 003 01 015	600341-8450-000	A-5555-0108	0,3	2,3		15,3	0,2 / 1,0		1,0
4	KT M5 004 01 015	-	-	0,4	2,5		15,5	0,3 / 1,0		1,0
5	KT M5 005 01 015	600341-8451-000	A-5555-0109	0,5	2,5		15,5	0,3 / 1,0		1,0
6	KT M5 006 01 015	600341-8452-000	A-5555-0110	0,6	4,6		15,6	0,4 / 1,0		1,0
7	KT M5 007 01 015	-	-	0,7	4,6		15,7	0,4 / 1,0		1,0
8	KT M5 008 01 015	600341-8453-000	A-5555-0111	0,8	4,8		15,8	0,6 / 1,0		1,0
9	KT M5 010 01 016	600341-8454-000	A-5555-0107	1,0	5,0		16,0	0,8 / 1,0		1,0
10	KT M5 013 10 026	600341-8500-000	A-5555-0112	1,35			26,35	1,0		1,0
11	KT M5 015 10 026	600341-8501-000	A-5555-0113	1,5			26,5	1,0		1,0
12	KT M5 020 10 027	-	-	2,0			27,0	1,0		1,0
13	KT M5 020 15 027	600341-8502-000	A-5555-0114	2,0			27,0	1,5		1,0
14	KT M5 025 10 027	-	-	2,5			27,5	1,0		1,0
15	KT M5 025 15 027	600341-8503-000	A-5555-0115	2,5			27,5	1,5		1,0
16	KT M5 030 20 038	600341-8510-000	A-5555-0116	3,0			38,0	2,0		2,0
17	KT M5 050 35 045	600341-8511-000	A-5555-0117	5,0			45,0	3,5		6,0

Peg mounted balls, except for ball-Ø 0,2mm - 0,4mm. Special designs on request.

All existing ball materials are available upon request for all styli and all thread sizes.

**5-way holder**

**Thread** M5  
**Material** Stainless steel



Pos.	itp Order No	analogue Zeiss	Renishaw Order No	DK	ML1 ML	DG D	L	DS1 DS	EAL B	Weight g
1	KH M5 000 11 010	600341-8367-000	A-5555-0105			11,0	10,0	1,0		3,2
2	KH M5 000 11 015	600341-8368-000	A-5555-0106			11,0	10,0	1,5		3,2
3	KH M5 000 11 020	626115-5000-199	-			11,0	10,0	2,0		3,2

Special designs on request.

Fits with styli KT M5 002 01 015 – KT M5 030 20 038.

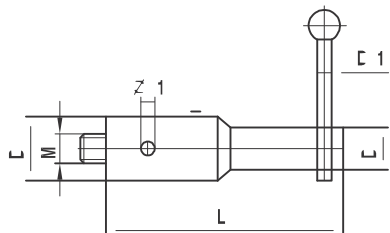
### Holder 90°

Pos.	itp Order No	analogue Zeiss	Renishaw Order No	DK	ML1 ML	DG D	L	DS1 DS	EAL B	Weight g
1	KI M5 115 11 045	600341-8160-000	A-5555-0104			11,0	45,0	1,0-1,5 / 6,0		16,0

**Thread** M5  
**Material** Stainless steel

Special designs on request.

Fits with styli KT M5 002 01 015 – KT M5 025 15 027.

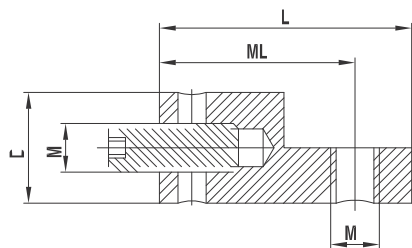


### Holder 90°, offset

Pos.	itp Order No	analogue Zeiss	Renishaw Order No	DK	ML1 ML	DG D	L	DS1 DS	EAL B	Weight g
1	KH M5 000 11 022	626105-6901-001	-		17,0	11,0	22,5			6,0

**Thread** M5  
**Material** Titanium

Special designs on request.

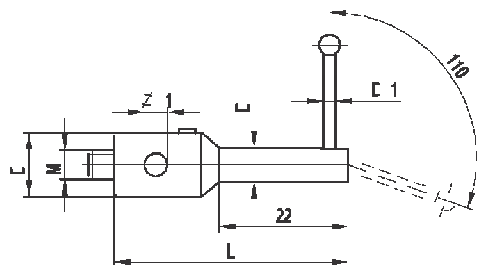


### Holder for swivel styli

Pos.	itp Order No	analogue Zeiss	Renishaw Order No	DK	ML1 ML	DG D	L	DS1 DS	EAL B	Weight g
1	KI M5 022 11 040	600341-8180-000	A-5555-0118			11,0	40,0	1,0-1,5 / 6,0		15,0

**Thread** M5  
**Material** Stainless steel

Special designs on request.



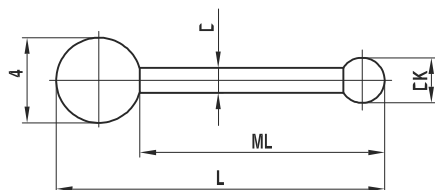
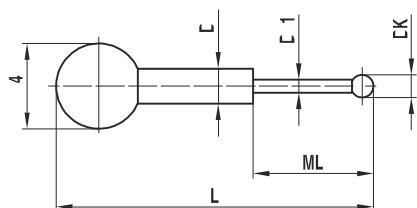
### Styli for swiveling configurations

Pos.	itp Order No	analogue Zeiss	Renishaw Order No	DK	ML1 ML	DG D	L	DS1 DS	EAL B	Weight g
1	KK M5 010 10 017	600341-8183-000	A-5555-0119	1,0	5,0		17,5	0,8 / 1,0		1,0
2	KK M5 020 15 028	600341-8185-000	A-5555-0120	2,0	24,5		28,5	1,5		1,0

**Thread** M5  
**Material** S4 steel ball, carbide stem, ruby ball

Peg mounted balls. Special designs on request.

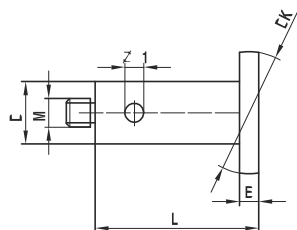
All existing ball materials are available upon request for all styli and all thread sizes.



### Spherical disk styli

Pos.	itp Order No	analogue Zeiss	Renishaw Order No	DK	ML1 ML	DG D	L	DS1 DS	EAL B	Weight g
1	KI M5 100 07 021	600341-8090-000	A-5555-0121	10,0		7,0	21,5		1,5	3,0
2	KI M5 150 10 021	600341-8095-000	A-5555-0122	15,0		10,0	21,5		1,5	6,0
3	KI M5 150 07 040	000000-1165-629	A-5555-0124	15,0		7,0	40,0		1,0	5,0
4	KI M5 200 07 060	602030-8091-000	A-5555-0123	20,0		7,0	60,0		1,0	8,0

**Thread** M5  
**Material** Aluminum base, high-strength steel disk

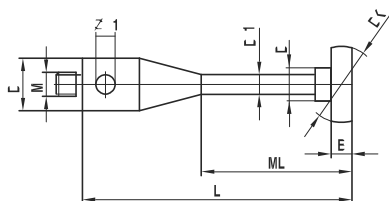


Special designs on request.

### Spherical disk styli ScanMax

Pos.	itp Order No	analogue Zeiss	Renishaw Order No	DK	ML1 ML	DG D	L	DS1 DS	EAL B	Weight g
1	KI M5 100 11 065	632001-8209-000	-	10,0	55,0	11,0	65,0	3,5/5,5	1,0	11,0
2	KI M5 150 11 065	632001-8211-000	-	15,0	55,0	11,0	65,0	3,5/5,5	1,0	18,0
3	KI M5 200 11 065	632001-8207-000	-	20,0	55,0	11,0	65,0	3,5/5,5	1,0	19,0
4	KI M5 250 11 065	632001-8208-000	-	25,0	55,0	11,0	65,0	3,5/10,0	1,0	22,0
5	KI M5 300 11 065	632001-8210-000	-	30,0	55,0	11,0	65,0	3,5/10,0	2,0	39,0
6	KI M5 400 11 065	632001-8213-000	-	40,0	55,0	11,0	65,0	3,5/10,0	2,0	57,0
7	KI M5 100 11 065/2	000000-1019-819	-	10,0	55,0	11,0	65,0	3,5/5,5	2,0	17,0
8	KI M5 150 11 065/2	000000-1019-820	-	15,0	55,0	11,0	65,0	3,5/5,5	2,0	20,0
9	KI M5 200 11 065/2	000000-1019-822	-	20,0	55,0	11,0	65,0	3,5/5,5	2,0	25,0
10	KI M5 250 11 065/2	000000-1019-824	-	25,0	55,0	11,0	65,0	3,5/10,0	2,0	32,0

**Thread** M5  
**Material** Stainless steel base and stem, high-strength steel disk

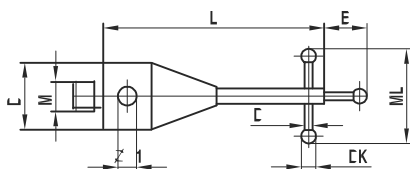


Special designs on request.

### Styli for thread measuring

Pos.	itp Order No	analogue Zeiss	Renishaw Order No	DK	ML1 ML	DG D	L	DS1 DS	EAL B	Weight g
1	TI M5 005 11 040	-	-	0,5	3,5	11,0	40,0	0,4	1,9	7,0
2	TI M5 008 11 040	-	A-5555-0077	0,8	5,0	11,0	40,0	0,6	1,9	7,0
3	TI M5 013 11 040	-	A-5555-0074	1,35	9,0	11,0	40,0	1,0	2,0	11,0
4	TI M5 018 11 040	-	A-5555-0076	1,8	10,0	11,0	40,0	1,0	2,0	12,0
5	TI M5 023 11 040	-	A-5555-0075	2,3	12,0	11,0	40,0	1,0	2,5	13,0

**Thread** M5  
**Material** Stainless steel base, carbide stem, ruby balls



Peg mounted balls. Special designs on request.

All existing ball materials are available upon request for all styli and all thread sizes.

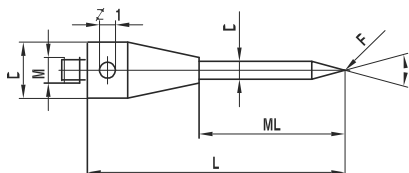


### Pointer styli

Pos.	itp Order No	analogue Zeiss	Renishaw Order No	DK	ML1 ML	DG D	L	DS1 DS	EAL B	Weight g
1	IH M5 030 11 061	600342-8051-000	A-5555-0216	30°	39,0	11,0	61,0	3,5		12,0

**Thread** M5  
**Material** Titanium base, carbide stem

Special designs on request.



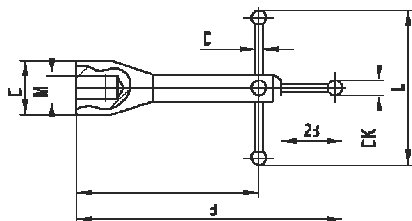
### Star styli

Pos.	itp Order No	analogue Zeiss	Renishaw Order No	DK	ML1 ML	DG D	L	DS1 DS	EAL B	Weight g
1	SA M5 050 19 080	600331-8093-000	A-5555-0215	5,0		19,0	80,0	3,5		70,0

**Thread** M5  
**Material** Aluminum base, carbide stems, ruby balls

Peg mounted balls. Special designs on request.

All existing ball materials are available upon request for all styli and all thread sizes.



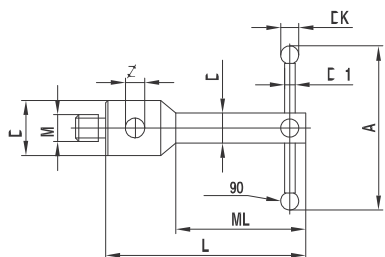
### Star styli

Pos.	itp Order No	analogue Zeiss	Renishaw Order No	DK	ML1 ML	DG D	L	DS1 DS	A	Weight g
1	SI M5 006 11 040	-	-	0,6	30,0	11,0	40,0	0,4/4,0	8,0	9,0
2	SI M5 008 11 040	-	-	0,8	30,0	11,0	40,0	0,6/4,0	8,0	9,0
3	SI M5 010 11 040	-	-	1,0	30,0	11,0	40,0	0,8/4,0	8,0	9,0

**Thread** M5  
**Material** Stainless steel base, carbide stems, ruby balls

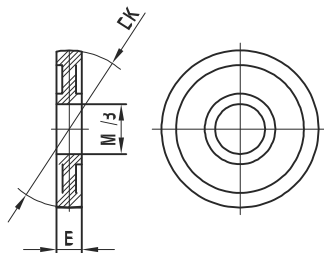
Peg mounted balls. Special designs on request.

All existing ball materials are available upon request for all styli and all thread sizes.



### Spherical disk

**Thread** M5  
**Material** High-strength steel

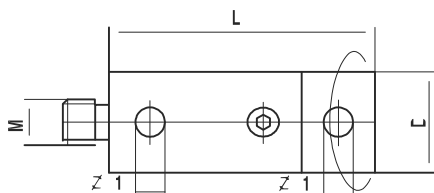


Pos.	itp Order No	analogue Zeiss	Renishaw Order No	DK	ML1 ML	DG D	L	Thread/ Bore hole	EAL B	Weight g
1	KI M5 040 15 M50	602030-0004-000	A-5555-0196	15,0				M5	4,0	5,0
2	KI M5 040 20 M50	602030-0005-000	A-5555-0197	20,0				M5	4,0	9,0
3	KI M5 040 30 M50	602030-0006-000	A-5555-0198	30,0				M5	4,0	21,0
5	KI M5 050 40 M50	602030-0007-000	A-5555-0199	40,0				M5	5,0	42,0
6	KI M5 050 50 M50	602030-0008-000	A-5555-0200	50,0				M5	5,0	64,0
6	KI M5 050 60 M50	602030-0009-000	A-5555-0201	60,0				M5	5,0	89,0
7	KI M5 040 20 080	602030-0011-000	A-5555-0203	20,0				8,0	4,0	8,0
8	KI M5 020 20 080	600341-0200-000	A-5555-0204	20,0				8,0	2,0	4,0
9	KI M5 040 30 080	600341-0203-000	A-5555-0205	30,0				8,0	4,0	10,0
10	KI M5 040 40 080	600341-0204-000	A-5555-0206	40,0				8,0	4,0	21,0
11	KI M5 050 50 080	600341-0205-000	A-5555-0207	50,0				8,0	5,0	36,0
12	KI M5 060 60 080	600341-0206-000	A-5555-0208	60,0				8,0	6,0	59,0

Special designs on request.

### Rotary adapter

**Thread** M5  
**Material** Titanium

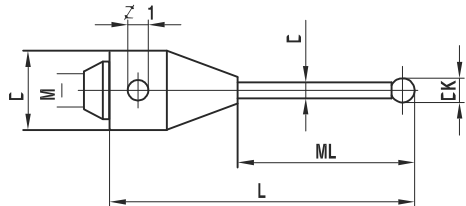


Pos.	itp Order No	analogue Zeiss	Renishaw Order No	DK	ML1 ML	DG D	L	DS1 DS	EAL B	Weight g
1	DT M5 000 11 029	612030-9737-000	-			11,0	29,0			13,0
2	DT M5 000 18 030	602030-9095-000	A-5555-0099			18,0	30,0			43,0

Special designs on request.

**Styli with conical stem base**

**Thread** M5  
**Material** Titanium base, carbide stem, ruby ball



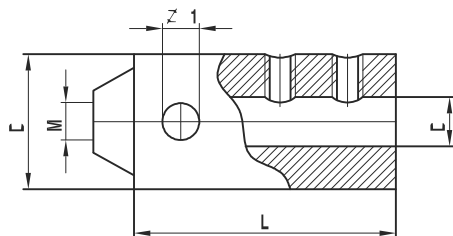
Pos.	itp Order No	analogue Zeiss	Renishaw Order No	DK	ML1 ML	DG D	L	DS1 DS	EAL B	Weight g
1	TH KO 030 19 050	-	A-5555-0001	3,0	21,5	19,0	50,0	2,0		23,0
2	TH KO 030 40 075	-	A-5555-0002	3,0	35,0	19,0	75,0	2,0		30,0
3	TH KO 030 25 075	-	A-5555-0003	3,0	50,0	19,0	75,0	2,0		22,0
4	TH KO 030 19 115	-	A-5555-0004	3,0	18,0	19,0	115,0	2,0		56,0
5	TH KO 050 40 075	-	A-5555-0005	5,0	35,0	19,0	75,0	3,5		34,0
6	TH KO 050 25 075	-	A-5555-0006	5,0	50,0	19,0	75,0	3,5		28,0
7	TH KO 050 19 100	-	A-5555-0007	5,0	60,0	19,0	100,0	3,5		38,0
8	TH KO 080 19 080	-	A-5555-0008	8,0	57,0	19,0	80,0	6,0		45,0
9	TH KO 080 19 100	-	A-5555-0009	8,0	60,0	19,0	100,0	6,0		57,0
10	TH KO 080 19 115	-	A-5555-0010	8,0	56,5	19,0	115,0	6,0		68,0
11	TH KO 080 19 140	-	A-5555-0011	8,0	100,0	19,0	140,0	6,0		74,0

Peg mounted balls. Special designs on request.

All existing ball materials are available upon request for all styli and all thread sizes.

**Conical holder**

**Thread** M5  
**Material** Stainless steel



Pos.	itp Order No	analogue Zeiss	Renishaw Order No	DK	ML1 ML	DG D	L	DS1 DS	EAL B	Weight g
1	KH KO 020 19 024	-	A-5555-0015			19,0	24,0	2,0		29,0
2	KH KO 035 19 024	-	A-5555-0016			19,0	24,0	3,5		29,0
3	KH KO 060 19 024	-	A-5555-0017			19,0	24,0	6,0		29,0

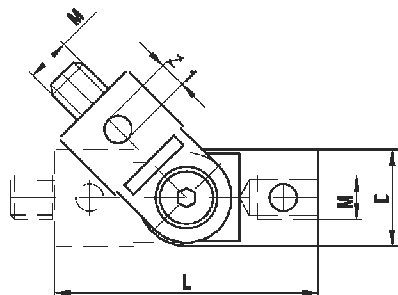
Special designs on request.

**Knuckle, swing range 180°**

Pos.	itp Order No	analogue Zeiss	Renishaw Order No	DK	ML1 ML	DG D	L	DS1 DS	EAL B	Weight g
1	GT M5 000 11 030	600342-9002-000	A-5555-0218			11,0	30,0			11,2
2	GT M5 000 18 036	600342-9003-000	A-5555-0219			18,0	36,0			37,2

**Thread** M5  
**Material** Titanium

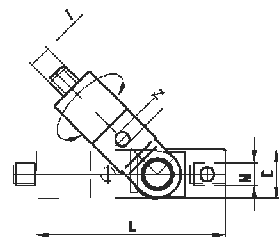
Special designs on request.


**Rotary knuckle, slewing range 360°, swing range 180°**

Pos.	itp Order No	analogue Zeiss	Renishaw Order No	DK	ML1 ML	DG D	L	DS1 DS	EAL B	Weight g
1	DG M5 000 11 051	-	-			11,0	51,0			19,0
2	DG M5 000 18 058	-	-			18,0	58,0			58,0

**Thread** M5  
**Material** Titanium

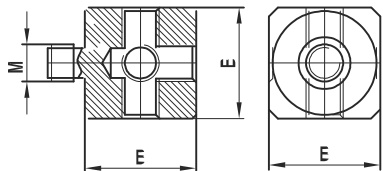
Special designs on request.



### Cube

Pos.	itp Order No	analogue Zeiss	Renishaw Order No	DK	ML1 ML	DG D	L	DS1 DS	EAL B	Weight g
1	WT M5 000 15 000	600341-8361-000	A-5555-0189						15,0	12,6
2	WT M5 000 15 000 OZ	626115-6110-001	-						15,0	12,6
3	WT M5 000 20 000	600341-8002-000	A-5555-0190						20,0	31,5
4	WT M5 000 20 000 OZ	626115-6110-003	-						20,0	31,5
5	WT M5 000 25 000	-	A-5555-0193						25,0	40,0

**Thread** M5  
**Material** Titanium

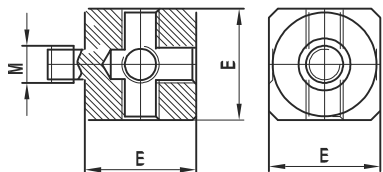


Special designs on request. OZ = setscrew enclosed.

### Cube

Pos.	itp Order No	analogue Zeiss	Renishaw Order No	DK	ML1 ML	DG D	L	DS1 DS	EAL B	Weight g
1	WA M5 000 15 000	602030-8363-000	A-5555-0191						15,0	7,5
2	WA M5 000 20 000	602030-8362-000	A-5555-0192						20,0	20,0

**Thread** M5  
**Material** Aluminum

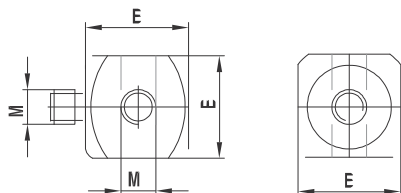


Special designs on request.

### Cube with countersunk screw

Pos.	itp Order No	analogue Zeiss	Renishaw Order No	DK	ML1 ML	DG D	L	DS1 DS	EAL B	Weight g
1	WT M5 S00 15 000	626115-6110-002	-						15,0	13,0

**Thread** M5  
**Material** Titanium



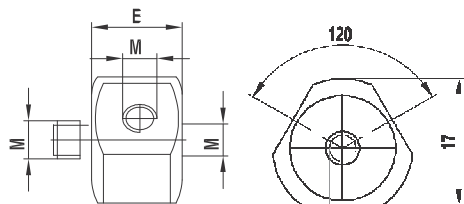
Special designs on request.

### 4-way cube

Pos.	itp Order No	analogue Zeiss	Renishaw Order No	DK	ML1 ML	DG D	L	DS1 DS	EAL B	Weight g
1	WT M5 120 15 000	-	-						15,0	13,0

**Thread** M5  
**Material** Titanium

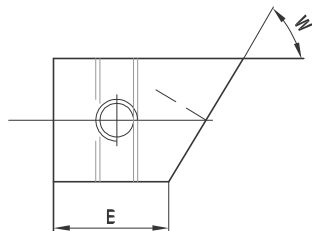
Special designs on request.



### Cube with angle

Pos.	itp Order No	analogue Zeiss	Renishaw Order No	DK	ML1 ML	DG D	L	W Grad	EAL B	Weight g
1	WT M5 875 15 000	-	-					87,5	15,0	13,0
2	WT M5 850 15 000	-	-					85,0	15,0	13,4
3	WT M5 825 15 000	-	-					82,5	15,0	13,8
4	WT M5 800 15 000	-	-					80,0	15,0	14,2
5	WT M5 775 15 000	-	-					77,5	15,0	14,6
6	WT M5 750 15 000	-	-					75,0	15,0	15,0
7	WT M5 725 15 000	-	-					72,5	15,0	15,4
8	WT M5 700 15 000	-	-					70,0	15,0	15,8
9	WT M5 675 15 000	-	-					67,5	15,0	16,2
10	WT M5 650 15 000	-	-					65,0	15,0	16,6
11	WT M5 625 15 000	-	-					62,5	15,0	17,0
12	WT M5 600 15 000	-	-					60,0	15,0	17,4
13	WT M5 575 15 000	-	-					57,5	15,0	17,8
14	WT M5 550 15 000	-	-					55,0	15,0	18,2
15	WT M5 525 15 000	-	-					52,5	15,0	18,6
16	WT M5 500 15 000	-	-					50,0	15,0	19,0
17	WT M5 475 15 000	-	-					47,5	15,0	19,4
18	WT M5 450 15 000	-	-					45,0	15,0	19,8

**Thread** M5  
**Material** Titanium



Special designs on request.

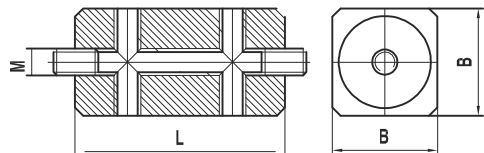
Setscrew enclosed.

### Double cube

Pos.	itp Order No	analogue Zeiss	Renishaw Order No	DK	ML1 ML	DG D	L	DS DS1	EAL B	Weight g
1	WT M5 000 20 040	-	A-5555-0194				40,0		20,0	64,0

**Thread** M5  
**Material** Titanium

Special designs on request.

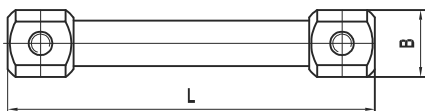


### Cube extension

Pos.	itp Order No	analogue Zeiss	Renishaw Order No	DK	ML1 ML	DG D	L	DS DS1	EAL B	Weight g
1	WT M5 000 20 120	-	A-5555-0217				120,0		20,0	87,0

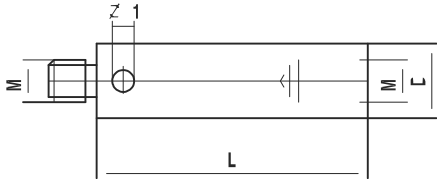
**Thread** M5  
**Material** Titanium

Special designs on request.



**Extension**

**Thread** M5  
**Material** Titanium



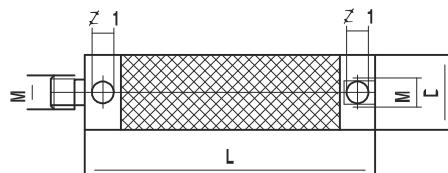
Pos.	itp Order No	analogue Zeiss	Renishaw Order No	DK	ML1 ML	DG D	L	DS1 DS	EAL B	Weight g
1	VT M5 000 11 010	602030-9044-000	A-5555-0143			11,0	10,0			3,9
2	VT M5 000 11 015	602030-9045-000	A-5555-0144			11,0	15,0			5,7
3	VT M5 000 11 020	602030-9046-000	A-5555-0145			11,0	20,0			7,5
4	VT M5 000 11 025	602030-9047-000	A-5555-0146			11,0	25,0			9,5
5	VT M5 000 11 030	000000-1251-674	-			11,0	30,0			9,8
6	VT M5 000 11 035	-	-			11,0	35,0			10,0
7	VT M5 000 11 040	602030-9049-000	A-5555-0148			11,0	40,0			12,6
8	VT M5 000 11 050	602030-9051-000	A-5555-0150			11,0	50,0			13,2
9	VT M5 000 11 060	602030-9053-000	A-5555-0152			11,0	60,0			14,2
10	VT M5 000 11 075	602030-9055-000	A-5555-0154			11,0	75,0			15,3
11	VT M5 000 11 080	602030-9057-000	A-5555-0156			11,0	80,0			15,6
12	VT M5 000 11 090	602030-9059-000	A-5555-0158			11,0	90,0			16,5
13	VT M5 000 11 100	602030-9061-000	A-5555-0160			11,0	100,0			17,2
14	VT M5 000 11 120	602030-9063-000	A-5555-0162			11,0	120,0			19,8
15	VT M5 000 11 150	602030-9065-000	A-5555-0164			11,0	150,0			22,5
16	VT M5 000 18 025	602030-9048-000	A-5555-0147			18,0	25,0			24,6
17	VT M5 000 18 040	602030-9050-000	A-5555-0149			18,0	40,0			31,5
18	VT M5 000 18 050	602030-9052-000	A-5555-0151			18,0	50,0			33,3
19	VT M5 000 18 060	602030-9054-000	A-5555-0153			18,0	60,0			35,1
20	VT M5 000 18 075	602030-9056-000	A-5555-0155			18,0	75,0			37,9
21	VT M5 000 18 080	602030-9058-000	A-5555-0157			18,0	80,0			38,8
22	VT M5 000 18 090	602030-9060-000	A-5555-0159			18,0	90,0			40,6
23	VT M5 000 18 100	602030-9062-000	A-5555-0161			18,0	100,0			42,5
24	VT M5 000 18 120	602030-9064-000	A-5555-0163			18,0	120,0			46,1
25	VT M5 000 18 150	602030-9066-000	A-5555-0165			18,0	150,0			51,6
26	VT M5 000 18 200	602030-9067-000	A-5555-0166			18,0	200,0			61,0
27	VT M5 000 18 250	602030-9068-000	A-5555-0167			18,0	250,0			70,0
28	VT M5 000 18 300	602030-9069-000	A-5555-0168			18,0	300,0			79,0

Special designs on request.



**Extension**

**Thread** M5  
**Material** Black carbon fibre thermostable, titanium ends



Pos.	itp Order No	analogue Zeiss	Renishaw Order No	DK	ML1 ML	DG D	L	DS1 DS	EAL B	Weight g
1	VC M5 TZ0 11 040	626107-1040-100	A-5555-0647			11,0	40,0			9,0
2	VC M5 TZ0 11 050	626107-1050-100	A-5555-0648			11,0	50,0			10,0
3	VC M5 TZ0 11 060	626107-1060-100	A-5555-0649			11,0	60,0			11,0
4	VC M5 TZ0 11 070	626107-1070-100	A-5555-0623			11,0	70,0			11,0
5	VC M5 TZ0 11 080	626107-1080-100	A-5555-0650			11,0	80,0			12,0
6	VC M5 TZ0 11 090	626107-1090-100	A-5555-0651			11,0	90,0			13,0
7	VC M5 TZ0 11 100	626107-1100-100	A-5555-0652			11,0	100,0			14,0
8	VC M5 TZ0 11 120	626107-1120-100	A-5555-0425			11,0	120,0			15,0
9	VC M5 TZ0 11 150	626107-1150-100	A-5555-0424			11,0	150,0			17,0
10	VC M5 TZ0 11 180	626107-1180-100	A-5555-0653			11,0	180,0			19,0
11	VC M5 TZ0 11 200	626107-1200-100	A-5555-0654			11,0	200,0			21,0
12	VC M5 TZ0 11 250	626107-1250-100	A-5555-0655			11,0	250,0			24,0
13	VC M5 TZ0 11 300	626107-1300-100	A-5555-0642			11,0	300,0			27,0
14	VC M5 TZ0 11 400	626107-1400-100	A-5555-0656			11,0	400,0			34,0
15	VC M5 TZ0 20 040	626107-2040-100	A-5555-0520			20,0	40,0			26,0
16	VC M5 TZ0 20 050	626107-2050-100	A-5555-0657			20,0	50,0			28,0
17	VC M5 TZ0 20 060	626107-2060-100	A-5555-0658			20,0	60,0			29,0
18	VC M5 TZ0 20 080	626107-2080-100	A-5555-0621			20,0	80,0			32,0
19	VC M5 TZ0 20 100	626107-2100-100	A-5555-0659			20,0	100,0			34,0
20	VC M5 TZ0 20 120	626107-2120-100	A-5555-0660			20,0	120,0			37,0
21	VC M5 TZ0 20 150	626107-2150-100	A-5555-0661			20,0	150,0			41,0
22	VC M5 TZ0 20 180	626107-2180-100	A-5555-0662			20,0	180,0			45,0
23	VC M5 TZ0 20 200	626107-2200-100	A-5555-0663			20,0	200,0			48,0
24	VC M5 TZ0 20 250	626107-2250-100	A-5555-0427			20,0	250,0			55,0
25	VC M5 TZ0 20 300	626107-2300-100	A-5555-0664			20,0	300,0			62,0
26	VC M5 TZ0 20 400	626107-2400-100	A-5555-0665			20,0	400,0			75,0
27	VC M5 TZ0 20 500	626107-2500-100	A-5555-0667			20,0	500,0			89,0
28	VC M5 TZ0 20 600	626107-2600-100	A-5555-0668			20,0	600,0			103,0

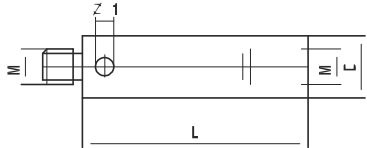
Special designs on request.

Thermostable carbon fiber made of high tech fibers used in aerospace technology. E-module of approximately 450 GPa.

**Extension**

Pos.	itp Order No	analogue Zeiss	Renishaw Order No	DK	ML1 ML	DG D	L	DS1 DS	EAL B	Weight g
1	VA M5 000 11 020	-	-			11,0	20,0			5,7
2	VA M5 000 11 040	600341-8261-000	A-5555-0135			11,0	40,0			10,3
3	VA M5 000 11 060	600341-8262-000	A-5555-0134			11,0	60,0			15,4
4	VA M5 000 11 080	600341-8263-000	A-5555-0133			11,0	80,0			20,6
5	VA M5 000 11 100	600341-8264-000	A-5555-0132			11,0	100,0			25,6
6	VA M5 000 11 120	600341-8265-000	A-5555-0131			11,0	120,0			30,9
7	VA M5 000 20 040	600341-8425-000	A-5555-0130			20,0	40,0			29,0
8	VA M5 000 20 050	-	A-5555-0671			20,0	50,0			33,3
9	VA M5 000 20 060	600341-8424-000	A-5555-0129			20,0	60,0			37,7
10	VA M5 000 20 080	600341-8423-000	A-5555-0128			20,0	80,0			44,8
11	VA M5 000 20 100	600341-8422-000	A-5555-0127			20,0	100,0			50,7
12	VA M5 000 20 150	600341-8421-000	A-5555-0126			20,0	150,0			67,4
13	VA M5 000 20 200	600341-8420-000	A-5555-0125			20,0	200,0			84,7

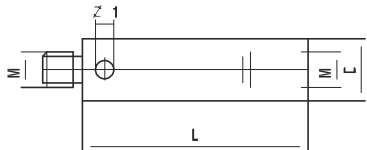
**Thread** M5  
**Material** Aluminum, stainless steel ends



**Extension**

Pos.	itp Order No	analogue Zeiss	Renishaw Order No	DK	ML1 ML	DG D	L	DS1 DS	EAL B	Weight g
1	VI M5 000 11 010	600341-0250-000	A-5555-0142			11,0	10,0			6,0
2	VI M5 000 11 015	600341-0251-000	A-5555-0141			11,0	15,0			9,0
3	VI M5 000 11 020	600341-0252-000	A-5555-0140			11,0	20,0			13,0
4	VI M5 000 11 040	600341-0254-000	A-5555-0139			11,0	40,0			28,0
5	VI M5 000 11 060	600341-0256-000	A-5555-0138			11,0	60,0			42,0
6	VI M5 000 11 080	600341-0258-000	A-5555-0137			11,0	80,0			58,0
7	VI M5 000 11 100	600341-0260-000	A-5555-0136			11,0	100,0			73,0

**Thread** M5  
**Material** Stainless steel

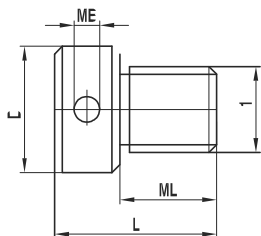


Special designs on request.

**Hole location gage**

Pos.	itp Order No	analogue Zeiss	Renishaw Order No	DK	ML1 ML	DG D	L	MB	G1	Weight g
1	GW M4 000 10 016	-	A-5555-0209		10,0	10,0	16,0	1,8	M4	4,0
2	GW M5 000 10 016	-	A-5555-0210		10,0	10,0	16,0	1,8	M5	4,0
3	GW M6 000 12 018	-	A-5555-0211		12,0	12,0	18,0	1,8	M6	7,0
4	GW M8 000 15 020	-	A-5555-0212		12,0	15,0	20,0	3,0	M8	13,0
5	GW M1 000 18 025	-	A-5555-0213		15,0	18,0	25,0	3,0	M10	25,0
6	GW M1 200 20 025	-	A-5555-0214		15,0	20,0	25,0	3,0	M12	33,0

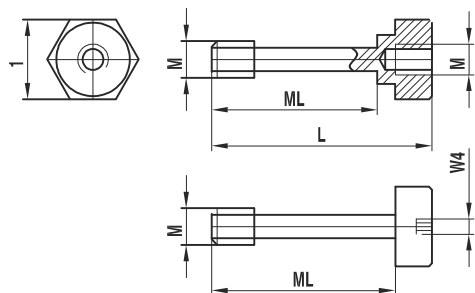
**Thread** M5  
**Material** Stainless steel



Special designs on request.

### Screw for cube and spherical disk

**Thread** M5  
**Material** Stainless steel

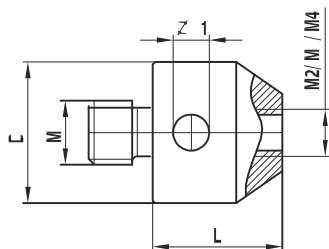


Pos.	itp Order No	analogue Zeiss	Renishaw Order No	DK	ML1 ML	DG D	L	DS1 DS	EAL B	Weight g
1	SI M5 000 10 017	600341-0212-000	A-5555-0223		9,0		17,5			7,0
2	SI M5 000 21 030	600341-0211-000	A-5555-0222		21,0		30,0			9,0
3	SI M5 000 26 035	600341-0210-000	A-5555-0221		26,0		35,0			9,0
4	SI M5 000 21 000	-	A-5555-0225		21,0					3,0
5	SI M5 000 26 000	-	A-5555-0224		26,0					4,0

Special designs on request.

### Adapter

**Thread** M5  
**Material** Stainless steel



Pos.	itp Order No	analogue Zeiss	Renishaw Order No	DK	ML1 ML	DG D	L	DS1 DS	from to	Weight g
1	RT M5 200 11 010	602030-0215-000	A-5555-0226			11,0	10,0		M5 / M2	5,2
2	RT M5 300 11 010	602030-0315-000	A-5555-0227			11,0	10,0		M5 / M3	5,2
3	RT M5 400 11 010	-	A-5555-0228			11,0	10,0		M5 / M4	5,2

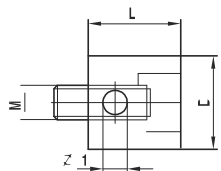
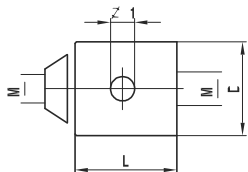
Special designs on request.

### Adapter with thread/conical stem base

Pos.	itp Order No	analogue Zeiss	Renishaw Order No	DK	ML1 ML	DG D	L	DS1 DS	EAL B	Weight g
1	AT KO 000 18 010	600331-0001-000	A-5555-0013			18,0	10,0			12,0
2	AT M5 000 18 010	-	A-5555-0014			18,0	12,0			10,0

**Thread** M5  
**Material** Stainless steel

Special designs on request.

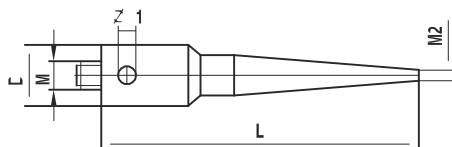


### Holder for digitalization styli

Pos.	itp Order No	analogue Zeiss	Renishaw Order No	DK	ML1 ML	DG D	L	DS1 DS	Thread	Weight g
1	DA M5 M2 15 119	-	A-5555-0231			15,81	119,0		M2	126,0
2	DA M5 M2 09 127	-	A-5555-0232			9,52	127,0		M2	87,0

**Thread** M5  
**Material** Stainless steel

Special designs on request.

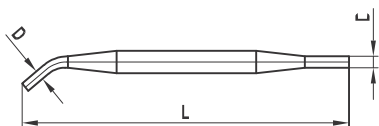


### Pin-type wrench

Pos.	itp Order No	analogue Zeiss	Renishaw Order No	DK	ML1 ML	DG D	L	DS1 DS	EAL B	Weight g
1	MI MO 029 00 070	000000-0015-328	A-5555-0240			2,9	70,0			
2	SS M5 002 08 596	600341-8596-000	A-5555-0238			2,9	70,0			

**Thread** M5  
**Material** Stainless steel

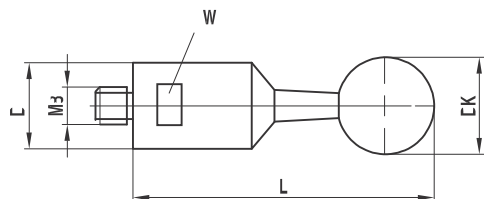
Special designs on request. SS = Set of 2 keys MI MO 029 00 070.



**Reference sphere with shaft**

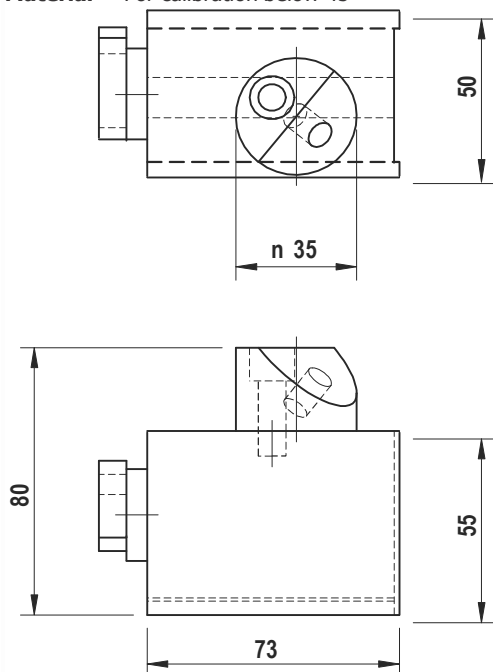
Pos.	itp Order No	analogue Zeiss	Renishaw Order No	DK	ML1 ML	DG D	L	DS1 DS	SW	Weight g
1	KN M8 150 24 130	-	-	15,0		24,0	130,0		22,0	
2	KN M8 200 24 135	-	-	20,0		24,0	135,0		22,0	
3	KN M8 250 24 140	-	-	25,0		24,0	140,0		22,0	
4	KN M8 300 24 145	-	-	30,0		24,0	145,0		22,0	

**Thread** M8  
**Material** Stainless steel, ceramic ball, including certificate


**Magnet base for reference sphere**

Pos.	itp Order No	analogue Zeiss	Renishaw Order No	DK	ML1 ML	DG D	L	DS1 DS	No of Pieces	Weight g	*	*	*
1	MAGNETFUSS KNM8	-	-										

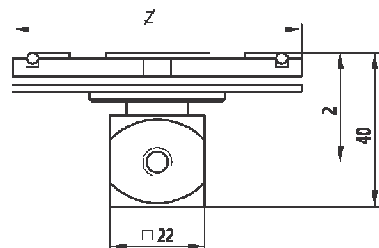
**Thread** M8  
**Material** For calibration below 45°



**Adapter plate for measuring systems  
MT/VAST**

Pos.	itp Order No	analogue Zeiss	Renishaw Order No	DK	ML1 ML	DG D	L	DS1 DS	No of Pieces	Weight g
1	TP M5 MES SO 001	600667-9601-000	A-5555-0255						1	153,0
2	TP M5 MES SO 002	600667-9611-000	A-5555-0256						2	306,0
3	TP M5 MES SO 001 OW*	626107-2000-940	A-5555-0258						1	130,0

**Thread** M5  
**Material** Aluminum, with active ID-chip

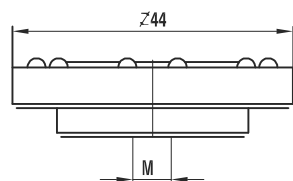


\*Adapter plate instead of cube.

**Adapter plate for dynamic systems (ST)**

Pos.	itp Order No	analogue Zeiss	Renishaw Order No	DK	ML1 ML	DG D	L	DS1 DS	No of Pieces	Weight g
1	AT M5 SCH AL 001	-	A-5555-0322						1	72,0
2	AT M5 SCH AL 002	600660-8251-000	A-5555-0251						2	144,0

**Thread** M5  
**Material** Aluminum

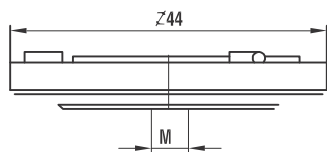


Balls at the plate.

**Adapter plate for Prismo dynamic systems (ST)**

Pos.	itp Order No	analogue Zeiss	Renishaw Order No	DK	ML1 ML	DG D	L	DS1 DS	No of Pieces	Weight g
1	TP M5 SCH AL 001	-	-						1	72,0
2	TP M5 SCH AL 002	620660-8251-000	A-5555-0253						2	144,0

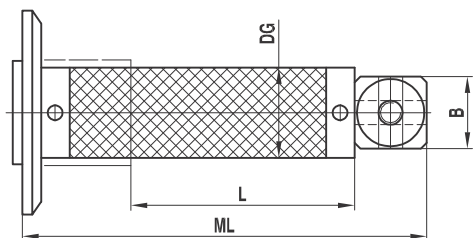
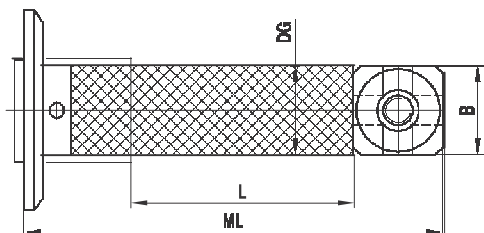
**Thread** M5  
**Material** Aluminum



Rollers at the plate.

**Adapter plate extension for MT/VAST**

**Thread** M5  
**Material** Black carbon fibre thermostable, titanium cube and plate adapter



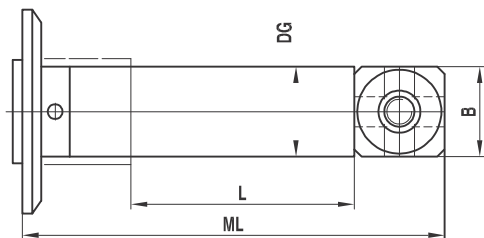
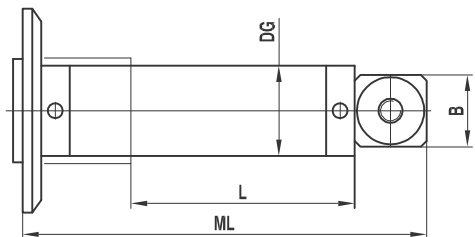
Pos.	itp Order No	analogue Zeiss	Renishaw Order No	DK	ML1 ML	DG D	L	DS1 DS	EAL B	Weight g	* * *
1	TV M5 TZ1 15 025	-	-		66,5	11,0	25,0		15,0	60,0	*****
2	TV M5 TZ1 15 040	-	-		81,5	11,0	40,0		15,0	62,0	*****
3	TV M5 TZ1 15 050	-	-		91,5	11,0	50,0		15,0	64,0	*****
4	TV M5 TZ1 15 060	-	-		101,5	11,0	60,0		15,0	66,0	*****
5	TV M5 TZ1 15 080	-	-		121,5	11,0	80,0		15,0	68,0	*****
6	TV M5 TZ1 15 100	-	-		141,5	11,0	100,0		15,0	70,0	*****
7	TV M5 TZ1 15 120	-	-		161,5	11,0	120,0		15,0	72,0	*****
8	TV M5 TZ1 15 150	-	-		191,5	11,0	150,0		15,0	77,0	*****
9	TV M5 TZ1 15 200	-	-		241,5	11,0	200,0		15,0	84,0	*****
10	TV M5 TZ2 15 025	626107-2025-130	-		66,5	20,0	25,0		15,0	60,0	*****
11	TV M5 TZ2 15 040	626107-2040-130	-		81,5	20,0	40,0		15,0	62,0	*****
12	TV M5 TZ2 15 050	626107-2050-130	-		91,5	20,0	50,0		15,0	64,0	*****
13	TV M5 TZ2 15 060	626107-2060-130	-		101,5	20,0	60,0		15,0	66,0	*****
14	TV M5 TZ2 15 080	626107-2080-130	-		121,5	20,0	80,0		15,0	68,0	*****
15	TV M5 TZ2 15 100	626107-2100-130	-		141,5	20,0	100,0		15,0	70,0	*****
16	TV M5 TZ2 15 120	626107-2120-130	-		161,5	20,0	120,0		15,0	72,0	*****
17	TV M5 TZ2 15 150	626107-2150-130	-		191,5	20,0	150,0		15,0	77,0	*****
18	TV M5 TZ2 15 200	626107-2200-130	-		241,5	20,0	200,0		15,0	84,0	*****
19	TV M5 TZ2 20 025	626107-2025-110	-		71,5	20,0	25,0		20,0	74,0	*****
20	TV M5 TZ2 20 040	626107-2040-110	-		86,5	20,0	40,0		20,0	76,0	*****
21	TV M5 TZ2 20 050	626107-2050-110	-		96,5	20,0	50,0		20,0	78,0	*****
22	TV M5 TZ2 20 060	626107-2060-110	-		106,5	20,0	60,0		20,0	80,0	*****
23	TV M5 TZ2 20 080	626107-2080-110	-		126,5	20,0	80,0		20,0	82,0	*****
24	TV M5 TZ2 20 100	626107-2100-110	-		146,5	20,0	100,0		20,0	84,0	*****
25	TV M5 TZ2 20 120	626107-2120-110	-		166,5	20,0	120,0		20,0	86,0	*****
26	TV M5 TZ2 20 150	626107-2150-110	-		196,5	20,0	150,0		20,0	91,0	*****
27	TV M5 TZ2 20 200	626107-2200-110	-		246,5	20,0	200,0		20,0	98,0	*****

Special designs on request.

Thermostable carbon fibre made of high tech fibres used in aerospace technology. E-module of approximately 450 GPa.

**Adapter plate extension for MT/VAST**

**Thread** M5  
**Material** Titanium, titanium cube and plate adapter



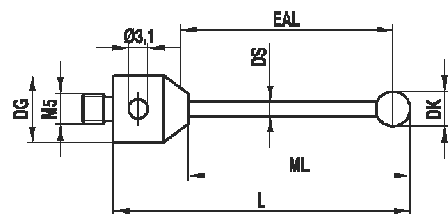
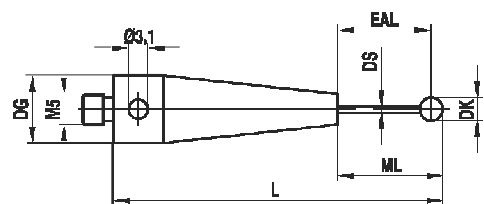
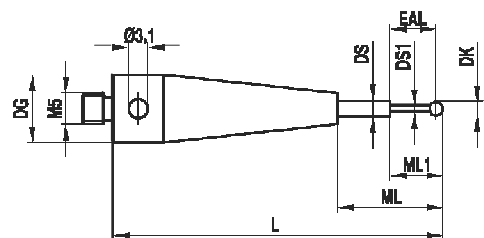
Pos.	itp Order No	analogue Zeiss	Renishaw Order No	DK	ML1 ML	DG D	L	DS1 DS	EAL B	Weight g	* * *
1	TV M5 011 15 025	-	-		66,5	11,0	25,0		15,0	65,0	*****
2	TV M5 011 15 040	-	-		81,5	11,0	40,0		15,0	67,0	*****
3	TV M5 011 15 050	-	-		91,5	11,0	50,0		15,0	70,0	*****
4	TV M5 011 15 060	-	-		101,5	11,0	60,0		15,0	72,0	*****
5	TV M5 011 15 080	-	-		121,5	11,0	80,0		15,0	74,0	*****
6	TV M5 011 15 100	-	-		141,5	11,0	100,0		15,0	76,0	*****
7	TV M5 011 15 120	-	-		161,5	11,0	120,0		15,0	78,0	*****
8	TV M5 011 15 150	-	-		191,5	11,0	150,0		15,0	85,0	*****
9	TV M5 018 15 025	-	-		66,5	18,0	25,0		15,0	65,0	*****
10	TV M5 018 15 040	-	-		81,5	18,0	40,0		15,0	67,0	*****
11	TV M5 018 15 050	-	-		91,5	18,0	50,0		15,0	70,0	*****
12	TV M5 018 15 060	-	-		101,5	18,0	60,0		15,0	72,0	*****
13	TV M5 018 15 080	-	-		121,5	18,0	80,0		15,0	74,0	*****
14	TV M5 018 15 100	-	-		141,5	18,0	100,0		15,0	76,0	*****
15	TV M5 018 15 120	-	-		161,5	18,0	120,0		15,0	78,0	*****
16	TV M5 018 15 150	-	-		191,5	18,0	150,0		15,0	85,0	*****
17	TV M5 018 15 200	-	-		241,5	18,0	200,0		15,0	92,0	*****
18	TV M5 018 20 025	-	-		71,5	18,0	25,0		20,0	84,0	*****
19	TV M5 018 20 040	-	-		86,5	18,0	40,0		20,0	84,0	*****
20	TV M5 018 20 050	-	-		96,5	18,0	50,0		20,0	87,0	*****
21	TV M5 018 20 060	-	-		106,5	18,0	60,0		20,0	90,0	*****
22	TV M5 018 20 080	-	-		126,5	18,0	80,0		20,0	92,0	*****
23	TV M5 018 20 100	-	-		146,5	18,0	100,0		20,0	95,0	*****
24	TV M5 018 20 120	-	-		166,5	18,0	120,0		20,0	98,0	*****
25	TV M5 018 20 150	-	-		196,5	18,0	150,0		20,0	105,0	*****
26	TV M5 018 20 200	-	-		246,5	18,0	200,0		20,0	114,0	*****

Special designs on request.



### Carbide styli

**Thread** M5  
**Material** Titanium base, carbide stem, ruby ball

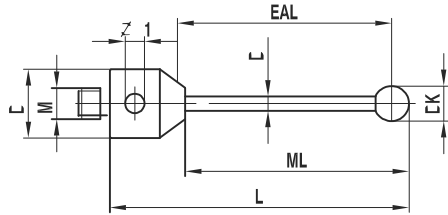


Pos.	itp Order No	analogue Renishaw	Short Desig.	DK	ML1 ML	DG D	L	DS1 DS	EAL B	Weight g	* * *
1	TH M5 002 10 020	-	-	0,2	2,3/5,15	10,0	20,15	0,18/1,0	2,2	6,5	*****
2	TH M5 0025 10 020	-	-	0,25	2,3/5,15	10,0	20,15	0,18/1,0	2,2	6,5	*****
3	TH M5 003 10 020	A-5003-5201	-	0,3	3,15/5,15	10,0	20,15	0,2/0,7	3,0	6,5	*****
4	TH M5 003 10 030	A-5003-5211	-	0,3	3,15/5,15	10,0	30,15	0,2/0,7	3,0	9,0	*****
5	TH M5 003 10 050	A-5003-5225	-	0,3	3,15/5,15	10,0	50,15	0,2/0,7	3,0	15,8	*****
6	TH M5 003 10 075	A-5003-5240	-	0,3	3,15/5,15	10,0	75,15	0,2/0,7	3,0	23,8	*****
7	TH M5 005 10 020	A-5003-5202	-	0,5	4,25/5,25	10,0	20,25	0,4/0,7	4,0	6,5	*****
8	TH M5 005 10 030	A-5003-5212	-	0,5	4,25/5,25	10,0	30,25	0,4/0,7	4,0	9,0	*****
9	TH M5 005 10 050	A-5003-5226	-	0,5	4,25/5,25	10,0	50,25	0,4/0,7	4,0	15,8	*****
10	TH M5 005 10 075	A-5003-5241	-	0,5	4,25/5,25	10,0	75,25	0,4/0,7	4,0	23,8	*****
11	TH M5 007 10 020	A-5003-5203	-	0,7	5,35	10,0	20,35	0,5	5,0	6,5	*****
12	TH M5 007 10 030	A-5003-5213	-	0,7	5,35	10,0	30,35	0,5	5,0	9,0	*****
13	TH M5 007 10 050	A-5003-5227	-	0,7	5,35	10,0	50,35	0,5	5,0	15,8	*****
14	TH M5 007 10 075	A-5003-5242	-	0,7	5,35	10,0	75,35	0,5	5,0	23,9	*****
15	TH M5 010 10 020	A-5003-5204	-	1,0	5,5	10,0	20,5	0,7	5,0	6,5	*****
16	TH M5 010 10 030	A-5003-5214	-	1,0	5,5	10,0	30,5	0,7	5,0	9,0	*****
17	TH M5 010 10 050	A-5003-5228	-	1,0	5,5	10,0	50,5	0,7	5,0	15,8	*****
18	TH M5 010 10 075	A-5003-5243	-	1,0	5,5	10,0	75,5	0,7	5,0	23,8	*****
19	TH M5 015 10 020	A-5003-5205	-	1,5	11,75	10,0	20,75	1,0	11,0	4,7	*****
20	TH M5 015 10 030	A-5003-5215	-	1,5	12,75	10,0	30,75	1,0	12,0	7,3	*****
21	TH M5 015 10 040	A-5003-5221	-	1,5	22,75	10,0	40,75	1,0	20,0	7,4	*****
22	TH M5 015 10 050	A-5003-5229	-	1,5	5,75	10,0	50,75	1,0	5,0	14,8	*****
23	TH M5 015 10 075	A-5003-5244	-	1,5	5,75	10,0	75,75	1,0	5,0	23,9	*****
24	TH M5 020 10 021	A-5003-5206	-	2,0	12,0	10,0	21,0	1,0	11,0	4,7	*****
25	TH M5 020 10 031	A-5003-5216	-	2,0	22,0	10,0	31,0	1,0	21,0	4,8	*****
26	TH M5 020 10 041	A-5003-5222	-	2,0	32,0	10,0	41,0	1,0	31,0	4,9	*****
27	TH M5 020 10 051	A-5003-5230	-	2,0	42,0	10,0	51,0	1,0	41,0	5,1	*****
28	TH M5 020 45 051	A-5003-5231	-	2,0	6,0	10,0	51,0	1,0	5,0	14,9	*****
29	TH M5 025 10 021	A-5003-5207	-	2,5	12,25	10,0	21,25	1,5	11,0	4,8	*****
30	TH M5 025 10 031	A-5003-5217	-	2,5	22,25	10,0	31,25	1,5	21,0	5,1	*****
31	TH M5 025 10 041	A-5003-5223	-	2,5	32,25	10,0	41,25	1,5	31,0	5,4	*****
32	TH M5 025 10 051	A-5003-5233	-	2,5	6,25	10,0	51,25	1,5	5,0	14,9	*****
33	TH M5 030 10 101	A-5003-5254	-	3,0	56,5	10,0	101,5	1,5	55,0	16,3	*****

Peg mounted balls, except for ball-Ø 0,2mm - 0,3mm. Special designs on request.  
 All existing ball materials are available upon request for all styli and all thread sizes.

### Carbide styli

**Thread** M5  
**Material** Titanium base, carbide stem, ruby ball



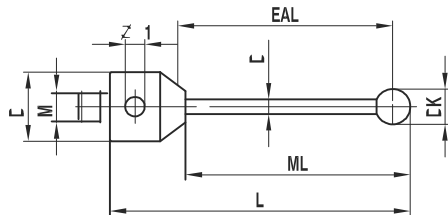
Pos.	itp Order No	analogue Renishaw	Short Desig.	DK	ML1 ML	DG D	L	DS1 DS	EAL B	Weight g
1	TH M5 030 11 025	A-5003-0787	-	3,0	15,0	11,0	25,0	2,0	15,0	4,0
2	TH M5 030 11 033	A-5003-0788	-	3,0	23,5	11,0	33,5	2,0	23,5	4,5
3	TH M5 030 11 050	A-5003-0789	-	3,0	40,0	11,0	50,0	2,0	40,0	5,2
4	TH M5 030 11 058	A-5003-0790	-	3,0	48,0	11,0	58,0	2,0	48,0	5,5
5	TH M5 040 11 033	A-5003-0791	-	4,0	23,5	11,0	33,5	2,0	23,5	4,5
6	TH M5 040 11 064	A-5003-0792	-	4,0	54,0	11,0	64,0	2,0	54,0	5,9
7	TH M5 050 11 050	A-5003-0794	-	5,0	40,0	11,0	50,0	3,5	40,0	9,0
8	TH M5 050 11 075	A-5003-0795	-	5,0	65,0	11,0	75,0	3,5	65,0	12,5
9	TH M5 060 11 054	A-5003-0797	-	6,0	44,0	11,0	54,0	3,5	44,0	10,0
10	TH M5 070 11 055	A-5003-0798	-	7,0	45,0	11,0	55,0	3,5	45,0	10,0
11	TH M5 080 11 063	A-5003-0799	-	8,0	50,5	11,0	63,5	6,0	50,5	24,8
12	TH M5 080 11 100	A-5003-0800	-	8,0	87,0	11,0	100,0	6,0	87,0	40,0
13	TH M5 080 11 114	A-5003-0801	-	8,0	101,5	11,0	114,5	6,0	101,5	45,8
14	TH M5 090 11 064	A-5003-0802	-	9,0	51,5	11,0	64,5	6,0	51,5	26,3
15	TH M5 100 11 065	A-5003-0803	-	10,0	52,5	11,0	65,5	6,0	52,5	25,8
16	TH M5 100 11 118	A-5003-0804	-	10,0	105,0	11,0	118,0	6,0	105,0	47,3

Peg mounted balls. Special designs on request.

All existing ball materials are available upon request for all styli and all thread sizes.

### Ceramic styli

**Thread** M5  
**Material** Titanium base, ceramic stem, ruby ball



Pos.	itp Order No	analogue Renishaw	Short Desig.	DK	ML1 ML	DG D	L	DS1 DS	EAL B	Weight g
1	TK M5 050 11 053	A-5003-0816	-	5,0	43,0	11,0	53,0	3,5	43,0	4,6
2	TK M5 060 11 054	A-5003-0819	-	6,0	44,0	11,0	54,0	3,5	44,0	4,7
3	TK M5 070 11 055	A-5003-0820	-	7,0	45,0	11,0	55,0	3,5	45,0	5,0
4	TK M5 080 11 063	A-5003-0821	-	8,0	50,5	11,0	63,5	6,0	50,5	8,3
5	TK M5 080 19 063	A-5003-0824	-	8,0	41,5	19,0	63,5	6,0	41,5	33,0
6	TK M5 080 19 114	A-5003-0825	-	8,0	92,5	19,0	114,5	6,0	92,5	38,0
7	TK M5 090 11 064	A-5003-0822	-	9,0	51,5	11,0	64,5	6,0	51,5	8,4
8	TK M5 090 19 064	A-5003-0826	-	9,0	42,5	19,0	64,5	6,0	42,5	21,0
9	TK M5 100 11 065	A-5003-0823	-	10,0	52,5	11,0	65,5	6,0	52,5	9,0
10	TK M5 100 19 065	A-5003-0827	-	10,0	43,5	19,0	65,5	6,0	43,5	38,0

Glued balls. Special designs on request.

All existing ball materials are available upon request for all styli and all thread sizes.

**Carbide styli with silicon nitride ball**

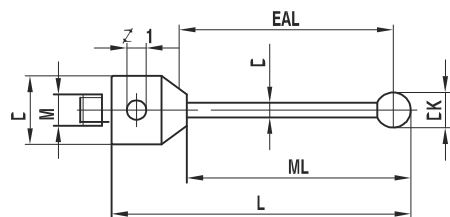
Pos.	itp Order No	analogue Renishaw	Short Desig.	DK	ML1 ML	DG D	L	DS1 DS	EAL B	Weight g
1	TH M5 S20 10 021	A-5003-5732	-	2,0	12,0	10,0	21,0	1,0	11,0	4,7

**Thread** M5

**Material** Titanium base, carbide stem, silicon nitride ball

Peg mounted ball. Special designs on request.

All existing ball materials are available upon request for all styli and all thread sizes.


**Carbide styli with zirconium oxide ball**

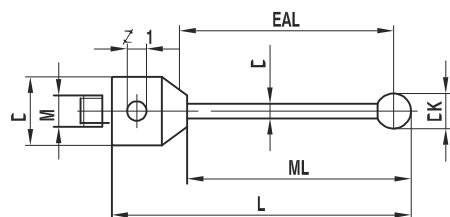
Pos.	itp Order No	analogue Renishaw	Short Desig.	DK	ML1 ML	DG D	L	DS1 DS	EAL B	Weight g
1	TH M5 Z20 10 021	A-5003-5746	-	2,0	12,0	10,0	21,0	1,0	11,0	4,7

**Thread** M5

**Material** Titanium base, carbide stem, zirconium oxide ball

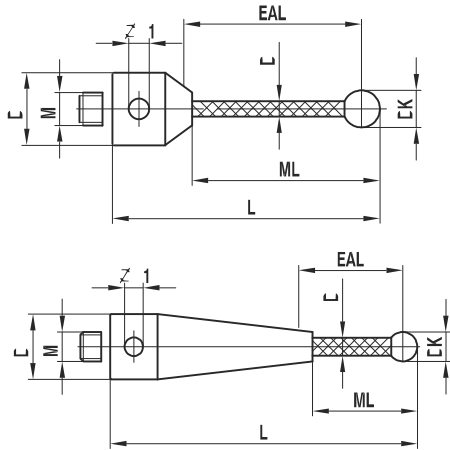
Peg mounted balls. Special designs on request.

All existing ball materials are available upon request for all styli and all thread sizes.



### Carbon fibre styli thermostable

**Thread** M5  
**Material** Titanium base, carbon fibre stem thermostable, ruby ball



Pos.	itp Order No	analogue Renishaw	Short Desig.	DK	ML1 ML	DG D	L	DS1 DS	EAL B	Weight g
1	TC M5 025 10 051	-	-	2,5	42,25	10,0	51,25	2,0	41,0	4,7
2	TC M5 030 10 021	A-5003-5208	-	3,0	12,5	10,0	21,5	2,0	11,0	4,6
3	TC M5 030 10 031	-	-	3,0	22,5	10,0	31,5	2,0	21,0	4,6
4	TC M5 030 10 041	-	-	3,0	32,5	10,0	41,5	2,0	31,0	4,7
5	TC M5 030 10 051	-	-	3,0	42,5	10,0	51,5	2,0	41,0	4,7
6	TC M5 030 10 101	-	-	3,0	21,5	10,0	101,5	2,0	20,0	24,8
7	TC M5 040 10 022	A-5003-5209	-	4,0	13,0	10,0	22,0	2,0	11,0	4,7
8	TC M5 040 10 032	-	-	4,0	23,0	10,0	32,0	2,0	21,0	4,7
9	TC M5 040 10 052	-	-	4,0	43,0	10,0	52,0	2,0	41,0	4,8
10	TC M5 040 10 077	-	-	4,0	68,0	10,0	77,0	3,0	65,0	5,3
11	TC M5 040 80 102	-	-	4,0	22,0	10,0	102,0	2,0	20,0	24,8
12	TC M5 040 50 102	-	-	4,0	52,0	10,0	102,0	3,0	50,0	18,0
13	TC M5 050 10 022	-	-	5,0	13,5	10,0	22,5	3,0	11,0	4,8
14	TC M5 050 10 032	-	-	5,0	23,5	10,0	32,5	3,0	21,0	4,9
15	TC M5 050 10 052	-	-	5,0	43,5	10,0	52,5	3,0	41,0	5,1
16	TC M5 050 10 077	-	-	5,0	68,5	10,0	77,5	3,0	65,0	5,4
17	TC M5 050 50 102	-	-	5,0	52,5	10,0	102,5	3,0	50,0	18,2
18	TC M5 050 10 102	-	-	5,0	93,5	10,0	102,5	3,0	91,0	5,7
19	TC M5 060 10 053	A-5003-5237	-	6,0	42,0	10,0	53,0	4,0	39,0	6,1
20	TC M5 060 10 078	A-5003-5250	-	6,0	67,0	10,0	78,0	4,0	64,0	6,6
21	TC M5 060 50 103	A-5003-5259	-	6,0	53,0	10,0	103,0	4,0	50,0	19,7
22	TC M5 060 10 103	A-5003-5260	-	6,0	92,0	10,0	103,0	4,0	89,0	7,1
23	TC M5 060 10 153	A-5003-5265	-	6,0	138,0	10,0	153,0	4,0	120,0	9,1
24	TC M5 060 10 203	A-5003-5268	-	6,0	188,0	10,0	203,0	4,0	180,0	10,1
25	TC M5 060 10 303	A-5003-5271	-	6,0	288,0	10,0	303,0	4,0	280,0	12,0
26	TC M5 080 10 054	A-5003-5238	-	8,0	41,0	10,0	54,0	6,0	37,0	8,0
27	TC M5 080 10 079	A-5003-5251	-	8,0	66,0	10,0	79,0	6,0	62,0	9,1
28	TC M5 080 50 104	A-5003-5261	-	8,0	54,0	10,0	104,0	6,0	50,0	23,0
29	TC M5 080 10 104	A-5003-5262	-	8,0	91,0	10,0	104,0	6,0	87,0	10,2
30	TC M5 080 10 154	A-5003-5266	-	8,0	135,0	10,0	154,0	6,0	120,0	13,7
31	TC M5 080 10 204	A-5003-5269	-	8,0	185,0	10,0	204,0	6,0	180,0	15,9
32	TC M5 080 10 304	A-5003-5272	-	8,0	285,0	10,0	304,0	6,0	280,0	20,3
33	TC M5 100 10 055	A-5003-5239	-	10,0	42,0	10,0	55,0	6,0	37,0	8,9
34	TC M5 100 10 080	A-5003-5252	-	10,0	67,0	10,0	80,0	6,0	62,0	10,0
35	TC M5 100 50 105	A-5003-5263	-	10,0	55,0	10,0	105,0	6,0	50,0	23,9
36	TC M5 100 10 105	A-5003-5264	-	10,0	92,0	10,0	105,0	6,0	87,0	11,1
37	TC M5 100 10 155	A-5003-5267	-	10,0	136,0	10,0	155,0	6,0	120,0	14,7
38	TC M5 100 10 205	A-5003-5270	-	10,0	186,0	10,0	205,0	6,0	180,0	16,9
39	TC M5 100 10 305	A-5003-5273	-	10,0	286,0	10,0	305,0	6,0	280,0	21,3

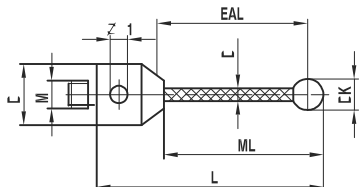
Peg mounted balls. Thermostable carbon fibre, E-module of approximately 450 GPa. Special designs on request.

All existing ball materials are available upon request for all styli and all thread sizes.

### Carbon fibre styli thermostable with silicon nitride ball

Pos.	itp Order No	analogue Renishaw	Short Desig.	DK	ML1 ML	DG D	L	DS1 DS	EAL B	Weight g
1	TC M5 S40 10 022	A-5003-5733	-	4,0	13,0	10,0	22,0	2,0	11,0	5,0
2	TC M5 S60 10 053	A-5003-5734	-	6,0	42,0	10,0	53,0	4,0	39,0	7,0
3	TC M5 S60 50 103	A-5003-5735	-	6,0	53,0	10,0	103,0	4,0	50,0	20,7

**Thread** M5  
**Material** Titanium base, carbon fibre stem thermostable, silicon nitride ball

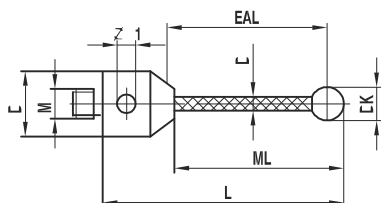


Peg mounted balls. Thermostable carbon fibre, E-module of approximately 450 GPa. Special designs on request.  
 All existing ball materials are available upon request for all styli and all thread sizes.

### Carbon fibre styli thermostable with zirconium oxide ball

Pos.	itp Order No	analogue Renishaw	Short Desig.	DK	ML1 ML	DG D	L	DS1 DS	EAL B	Weight g
1	TC M5 Z40 10 022	A-5003-5747	-	4,0	13,0	10,0	22,0	2,0	11,0	5,0
2	TC M5 Z60 10 053	A-5003-5748	-	6,0	42,0	10,0	53,0	4,0	39,0	7,0
3	TC M5 Z60 50 103	A-5003-5749	-	6,0	53,0	10,0	103,0	4,0	50,0	20,7

**Thread** M5  
**Material** Titanium base, carbon fibre stem thermostable, zirconium oxide ball

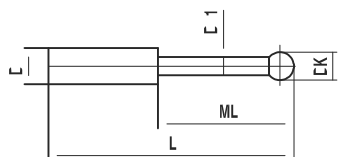


Peg mounted balls. Thermostable carbon fibre, E-module approximately 450 GPa. Special designs on request.  
 All existing ball materials are available upon request for all styli and all thread sizes.

### Styli for holder

Pos.	itp Order No	analogue Renishaw	Short Desig.	DK	ML1 ML	DG D	L	DS1 DS	EAL B	Weight g
1	KT M5 003 01 015	A-5003-0805	-	0,3	2,3		15,3	0,2 / 1,0		1,0
2	KT M5 005 01 015	A-5003-0806	-	0,5	2,5		15,5	0,3 / 1,0		1,0
3	KT M5 006 01 015	A-5003-0807	-	0,6	4,6		15,6	0,4 / 1,0		1,0
4	KT M5 008 01 015	A-5003-0808	-	0,8	4,8		15,8	0,6 / 1,0		1,0
5	KT M5 010 01 016	A-5003-0809	-	1,0	5,0		16,0	0,8 / 1,0		1,0
6	KT M5 015 10 026	A-5003-0810	-	1,5	26,5		26,5	1,0		1,0
7	KT M5 020 15 027	A-5003-0811	-	2,0	27,0		27,0	1,5		1,0
8	KT M5 025 15 027	A-5003-0812	-	2,5	27,5		27,5	1,5		1,0

**Thread** M5  
**Material** Carbide stem, ruby ball

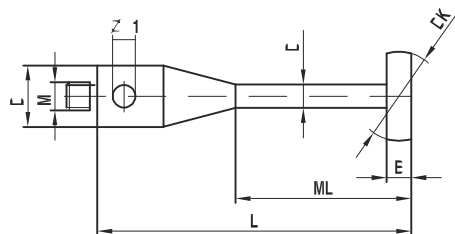


Peg mounted balls, except for ball-Ø 0,3mm. Special designs on request.  
 All existing ball materials are available upon request for all styli and all thread sizes.

### Spherical disk styli

Pos.	itp Order No	analogue Renishaw	Short Desig.	DK	ML1 ML	DG D	L	DS1 DS	EAL B	Weight g
1	KH M5 080 12 056	A-5003-1091	-	8,0	46,0	12,0	57,0	2,5	1,0	12,0
2	KH M5 100 12 046	A-5003-1090	-	10,0	35,7	12,0	46,7	3,0	0,7	13,0
3	KH M5 160 12 057	A-5003-1092	-	16,0	49,5	12,0	60,5	3,5	2,5	18,0

**Thread** M5  
**Material** Stainless steel base, carbide stem, high-strength steel disk

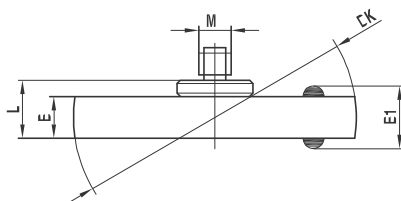


Special designs on request.

### Spherical disk styli with two hemispherical rubies

Pos.	itp Order No	analogue Renishaw	Short Desig.	DK	ML1 ML	DG D	L	DS1 DS	B1 B	Weight g
1	KI M5 030 12 M50	A-5003-5288	-	12,0			5,0		5,0 / 3,0	2,6
2	KI M5 030 21 M50	A-5003-5289	-	21,0			5,0		5,0 / 3,0	5,3
3	KI M5 050 35 M50	A-5003-5290	-	35,0			7,0		8,0 / 5,0	14,0
4	KI M5 050 63 M50	A-5003-5291	-	63,5			7,0		8,0 / 5,0	51,0

**Thread** M5  
**Material** Stainless steel base, high-strength steel disk

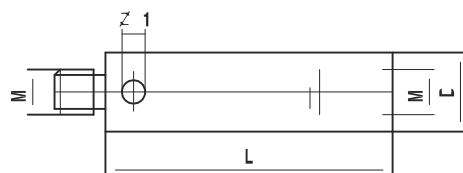


Special designs on request. Disk in steel. EAL corresponds to dimension B in the drawing.

### Extension

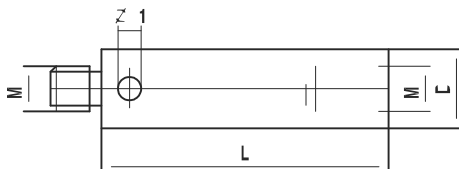
Pos.	itp Order No	analogue Renishaw	Short Desig.	DK	ML1 ML	DG D	L	DS1 DS	EAL B	Weight g
1	VI M5 000 11 010	A-5555-0142	-			11,0	10,0			6,0
2	VI M5 000 11 020	A-5555-0140	-			11,0	20,0			13,0
3	VI M5 000 11 030	A-5555-0669	-			11,0	30,0			20,0
4	VI M5 000 11 040	A-5003-0841	-			11,0	40,0			28,0
5	VI M5 000 11 050	A-5555-0670	-			11,0	50,0			34,8
6	VI M5 000 11 060	A-5003-0842	-			11,0	60,0			43,0
7	VI M5 000 11 080	A-5003-0843	-			11,0	80,0			58,0
8	VI M5 000 11 100	A-5555-0136	-			11,0	100,0			73,0

**Thread** M5  
**Material** Stainless steel



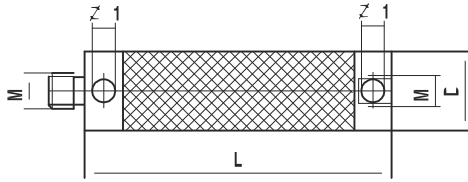
Special designs on request.

Extension		Pos.	itp Order No	analogue Renishaw	Short Desig.	DK	ML1 ML	DG D	L	DS1 DS	EAL B	Weight g
<b>Thread</b>	M5	1	VA M5 000 11 040	A-5003-0834	-			11,0	40,0			10,3
<b>Material</b>	Aluminum, stainless steel ends	2	VA M5 000 11 060	A-5003-0835	-			11,0	60,0			15,4
		3	VA M5 000 11 080	A-5003-0836	-			11,0	80,0			20,6
		4	VA M5 000 11 100	A-5003-0837	-			11,0	100,0			25,6
		5	VA M5 000 11 120	A-5003-0838	-			11,0	120,0			30,9
		6	VA M5 000 20 040	A-5003-0828	-			20,0	40,0			29,0
		7	VA M5 000 20 050	A-5555-0671	-			20,0	50,0			34,0
		8	VA M5 000 20 060	A-5003-0829	-			20,0	60,0			37,7
		9	VA M5 000 20 080	A-5003-0830	-			20,0	80,0			44,8
		10	VA M5 000 20 100	A-5555-0127	-			20,0	100,0			50,7
		11	VA M5 000 20 150	A-5003-0832	-			20,0	150,0			67,4
		12	VA M5 000 20 200	A-5555-0125	-			20,0	200,0			84,7



**Extension**

**Thread** M5  
**Material** Black carbon fibre thermostable, titanium ends



Pos.	itp Order No	analogue Renishaw	Short Desig.	DK	ML1 ML	DG D	L	DS1 DS	EAL B	Weight g
1	VC M5 TZ0 11 040	A-5555-0647	-			11,0	40,0			9,0
2	VC M5 TZ0 11 050	A-5555-0648	-			11,0	50,0			10,0
3	VC M5 TZ0 11 060	A-5555-0649	-			11,0	60,0			11,0
4	VC M5 TZ0 11 070	A-5555-0623	-			11,0	70,0			11,0
5	VC M5 TZ0 11 080	A-5555-0650	-			11,0	80,0			12,0
6	VC M5 TZ0 11 090	A-5555-0651	-			11,0	90,0			13,0
7	VC M5 TZ0 11 100	A-5555-0652	-			11,0	100,0			14,0
8	VC M5 TZ0 11 120	A-5555-0425	-			11,0	120,0			15,0
9	VC M5 TZ0 11 150	A-5555-0424	-			11,0	150,0			17,0
10	VC M5 TZ0 11 180	A-5555-0653	-			11,0	180,0			19,0
11	VC M5 TZ0 11 200	A-5555-0654	-			11,0	200,0			21,0
12	VC M5 TZ0 11 250	A-5555-0655	-			11,0	250,0			24,0
13	VC M5 TZ0 11 300	A-5555-0642	-			11,0	300,0			27,0
14	VC M5 TZ0 11 400	A-5555-0656	-			11,0	400,0			34,0
15	VC M5 TZ0 20 040	A-5555-0520	-			20,0	40,0			26,0
16	VC M5 TZ0 20 050	A-5555-0657	-			20,0	50,0			28,0
17	VC M5 TZ0 20 060	A-5555-0658	-			20,0	60,0			29,0
18	VC M5 TZ0 20 080	A-5555-0621	-			20,0	80,0			32,0
19	VC M5 TZ0 20 100	A-5555-0659	-			20,0	100,0			34,0
20	VC M5 TZ0 20 120	A-5555-0660	-			20,0	120,0			37,0
21	VC M5 TZ0 20 150	A-5555-0661	-			20,0	150,0			41,0
22	VC M5 TZ0 20 180	A-5555-0662	-			20,0	180,0			45,0
23	VC M5 TZ0 20 200	A-5555-0663	-			20,0	200,0			48,0
24	VC M5 TZ0 20 250	A-5555-0427	-			20,0	250,0			55,0
25	VC M5 TZ0 20 300	A-5555-0664	-			20,0	300,0			62,0
26	VC M5 TZ0 20 400	A-5555-0665	-			20,0	400,0			75,0
27	VC M5 TZ0 20 500	A-5555-0667	-			20,0	500,0			89,0
28	VC M5 TZ0 20 600	A-5555-0668	-			20,0	600,0			103,0

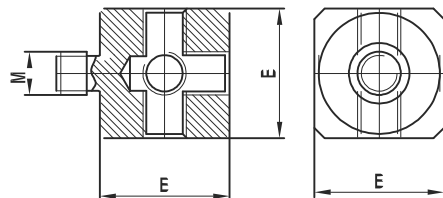
Special designs on request.

Thermostable carbon fiber made of high tech fibers used in aerospace technology. E-module of approximately 450 GPa.



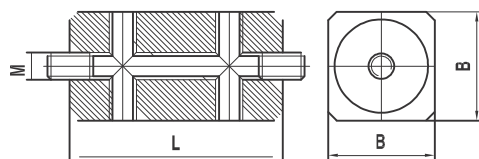
Cube		Pos.	itp Order No	analogue Renishaw	Short Desig.	DK	ML1 ML	DG D	L	DS1 DS	EAL B	Weight g
Thread	M5	1	WT M5 000 15 000	A-5003-5680	-						15,0	12,6
Material	Titanium	2	WT M5 000 20 000	A-5003-5681	-						20,0	31,5

Special designs on request.



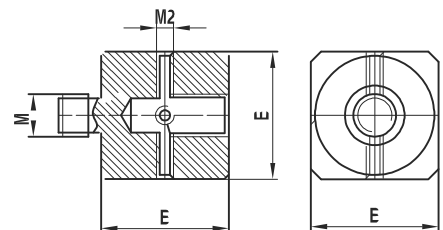
Double cube		Pos.	itp Order No	analogue Renishaw	Short Desig.	DK	ML1 ML	DG D	L	DS1 DS	EAL B	Weight g
Thread	M5	1	WT M5 000 20 040	A-5003-5682	-				40,0		20,0	64,0

Special designs on request.



Cube		Pos.	itp Order No	analogue Renishaw	Short Desig.	DK	ML1 ML	DG D	L	DS1 DS	EAL B	Weight g
Thread	M5/M2	1	WT M5 0M2 15 000	A-5003-5683	-						15,0	13,8
Material	Titanium	2	WT M5 0M2 20 000	A-5003-5684	-						20,0	35,2

Special designs on request.

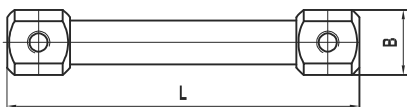


### Cube extension

Pos.	itp Order No	analogue Renishaw	Short Desig.	DK	ML1 ML	DG D	L	DS1 DS	EAL B	Weight g
1	WT M5 000 20 120	A-5003-1095	-				120,0		20,0	87,0

**Thread** M5  
**Material** Titanium

Special designs on request.

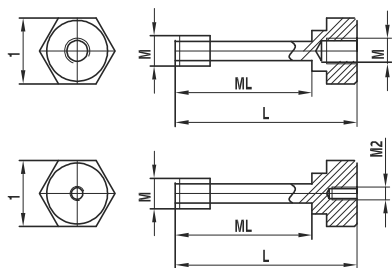


### Screw for cube and spherical disk

Pos.	itp Order No	analogue Renishaw	Short Desig.	DK	ML1 ML	DG D	L	DS1 DS	EAL B	Weight g
1	SI M5 000 21 030	A-5003-5677	-		21,0		30,0			9,0
2	SI M5 000 26 035	A-5003-5676	-		26,0		35,0			9,0
3	SI M5 0M2 20 030	A-5003-5679	-		20,0		30,0			6,7
4	SI M5 0M2 26 035	A-5003-5678	-		26,0		35,0			7,1

**Thread** M5  
**Material** Stainless steel

Special designs on request.

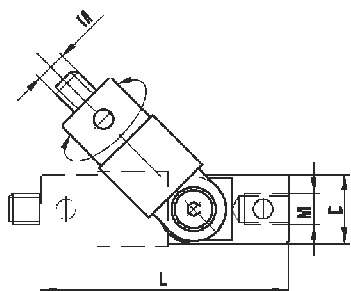


### Rotary knuckle, slewing range 360°, swing range 180°

Pos.	itp Order No	analogue Renishaw	Short Desig.	DK	ML1 ML	DG D	L	DS1 DS	EAL B	Weight g
1	DG M5 000 11 051	-	-			11,0	51,0			19,0
2	DG M5 000 18 058	-	-			18,0	58,0			58,0

**Thread** M5  
**Material** Titanium

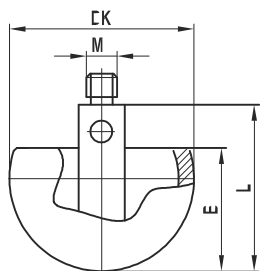
Special designs on request.



### Hollow ceramic hemisphere

Pos.	itp Order No	analogue Renishaw	Short Desig.	DK	ML1 ML	DG D	L	DS1 DS	EAL B	Weight g
1	HK M5 160 10 019	A-5003-5275	-	16,0		10,0	19,5		10,0	7,0
2	HK M5 180 10 020	-	-	18,0		10,0	20,0		12,0	7,0
3	HK M5 220 10 020	A-5003-5276	-	22,0		10,0	20,0		13,0	10,0
4	HK M5 300 10 024	A-5003-5277	-	30,0		10,0	24,5		18,0	18,0

**Thread** M5  
**Material** Stainless steel base, hollow ceramic hemisphere

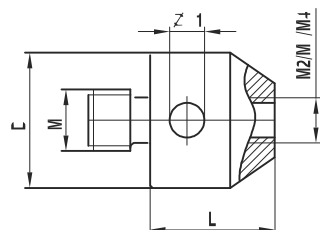


Special designs on request.

### Adapter

Pos.	itp Order No	analogue Renishaw	Short Desig.	DK	ML1 ML	DG D	L	from to	EAL B	Weight g
1	RT M5 200 11 010	A-5003-0858	-			11,0	10,0	M5 / M2		5,2
2	RT M5 300 11 010	A-5003-0857	-			11,0	10,0	M5 / M3		5,2
3	RT M5 400 11 010	A-5003-0856	-			11,0	10,0	M5 / M4		5,2

**Thread** M5  
**Material** Stainless steel



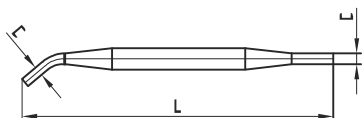
Special designs on request.

### Pin-type wrench

Pos.	itp Order No	analogue Renishaw	Short Desig.	DK	ML1 ML	DG D	L	DS1 DS	EAL B	Weight g
1	MI MO 029 00 070	M-5000-9304	-			2,9	70,0			

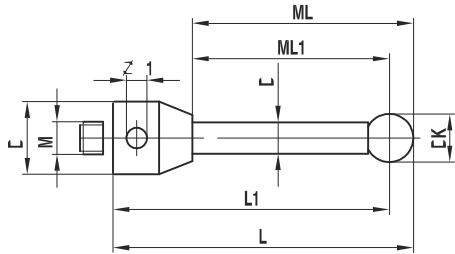
**Thread** M5  
**Material** Stainless steel

Special designs on request.



### Carbide styli

**Thread** M5  
**Material** Stainless steel base, carbide stem, ruby ball



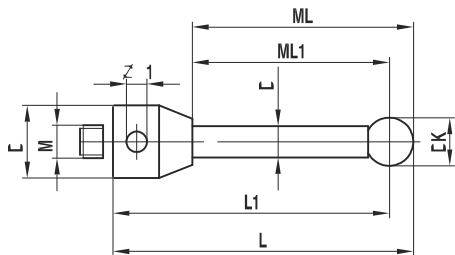
Pos.	itp Order No	analogue Leitz	DK	ML1 ML	DG D	L L1	DS1 DS	EAL B	Weight g
1	TH M5 015 12 028	M00-694-150-016	1,5	7,0/7,75	12,0	28,75/28,0	1,0		10,0
2	TH M5 015 12 040	-	1,5	19,0/19,75	12,0	40,75/40,0	1,0		11,0
3	TH M5 020 12 030	060-694.150-007	2,0	18,5/19,5	12,0	31,0/30,0	1,5		7,0
4	TH M5 020 12 035	-	2,0	23,5/24,5	12,0	36,0/35,0	1,5		7,5
5	TH M5 020 12 041	060-694.150-013	2,0	30,0/31,0	12,0	42,0/41,0	1,5		8,0
6	TH M5 020 12 060	-	2,0	39,5/40,5	12,0	61,0/60,0	1,5		12,0
7	TH M5 030 12 035	060-694.050-000	3,0	24,0/25,5	12,0	36,5/35,0	2,0		9,0
8	TH M5 030 12 050	060-694.051-000	3,0	39,0/40,5	12,0	51,5/50,0	2,0		10,0
9	TH M5 035 12 091	-	3,5	78,0/79,75	12,0	92,75/91,0	3,0		18,0
10	TH M5 040 12 055	M00-694-150-017	4,0	42,0/44,0	12,0	57,0/55,0	3,0		13,0
11	TH M5 040 12 080	M00-694-150-018	4,0	69,0/71,0	12,0	82,0/80,0	2,5		16,0
12	TH M5 050 12 060	060-694.053-000	5,0	49,0/51,5	12,0	62,5/60,0	3,5		16,0
13	TH M5 050 12 080	060-694.054-000	5,0	69,0/71,5	12,0	82,5/80,0	3,5		19,0
14	TH M5 080 12 068	M02-J01-100-058	8,0	50,0/54,0	12,0	72,0/68,0	3,0		32,0
15	TH M5 080 12 090	060-694.056-000	8,0	74,0/78,0	12,0	94,0/90,0	6,0		46,0
16	TH M5 080 12 125	-	8,0	109,0/113,0	12,0	129,0/125,0	6,0		61,0
17	TH M5 080 12 176	060-694.150-014	8,0	160,0/164,0	12,0	180,0/176,0	6,0		80,0

Peg mounted balls. Special designs on request.

All existing ball materials are available upon request for all styli and all thread sizes.

### Carbide styli with silicon nitride ball

**Thread** M5  
**Material** Stainless steel base, carbide stem, silicon nitride ball



Pos.	itp Order No	analogue Leitz	DK	ML1 ML	DG D	L L1	DS1 DS	EAL B	Weight g
1	TH M5 S15 12 028	M00-694-131-000	1,5	7,0/7,75	12,0	28,75/28,0	1,0		10,0
2	TH M5 S15 12 040	-	1,5	19,0/19,75	12,0	40,75/40,0	1,0		11,0
3	TH M5 S20 12 030	M00-694-126-000	2,0	18,5/19,5	12,0	31,0/30,0	1,5		7,0
4	TH M5 S20 12 035	-	2,0	23,5/24,5	12,0	36,0/35,0	1,5		7,5
5	TH M5 S20 12 041	-	2,0	30,0/31,0	12,0	42,0/41,0	1,5		8,0
6	TH M5 S20 12 060	-	2,0	39,5/40,5	12,0	61,0/60,0	1,5		12,0
7	TH M5 S30 12 035	-	3,0	24,0/25,5	12,0	36,5/35,0	2,0		9,0
8	TH M5 S30 12 050	M00-694-121-000	3,0	39,0/40,5	12,0	51,5/50,0	2,0		10,0
9	TH M5 S35 12 091	-	3,5	78,0/79,75	12,0	92,75/91,0	3,0		18,0
10	TH M5 S40 12 055	M00-694-132-000	4,0	42,0/44,0	12,0	57,0/55,0	3,0		13,0
11	TH M5 S40 12 080	-	4,0	69,0/71,0	12,0	82,0/80,0	2,5		16,0
12	TH M5 S50 12 060	-	5,0	49,0/51,5	12,0	62,5/60,0	3,5		16,0
13	TH M5 S50 12 080	M00-694-123-000	5,0	69,0/71,5	12,0	82,5/80,0	3,5		19,0
14	TH M5 S80 12 068	-	8,0	50,0/54,0	12,0	72,0/68,0	3,0		32,0
15	TH M5 S80 12 090	-	8,0	74,0/78,0	12,0	94,0/90,0	6,0		46,0
16	TH M5 S80 12 125	M00-694-125-000	8,0	109,0/113,0	12,0	129,0/125,0	6,0		61,0
17	TH M5 S80 12 176	M00-694-131-000	8,0	160,0/164,0	12,0	180,0/176,0	6,0		80,0

Peg mounted balls. Special designs on request.

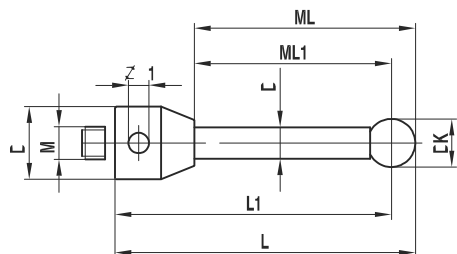
All existing ball materials are available upon request for all styli and all thread sizes.

### Ceramic styli

Pos.	itp Order No	analogue Leitz	DK	ML1 ML	DG D	L L1	DS1 DS	EAL B	Weight g
1	TK M5 080 12 090	060-813.042-000	8,0	74,0/78,0	12,0	94,0/90,0	6,0		16,0
2	TK M5 080 12 125	060-813.041-000	8,0	109,0/113,0	12,0	129,0/125,0	6,0		20,0
3	TK M5 150 12 090	M00-694-186-000	15,0	74,0/81,5	12,0	97,5/90,0	6,0		51,0

Glued balls. Special designs on request.

All existing ball materials are available upon request for all styli and all thread sizes.

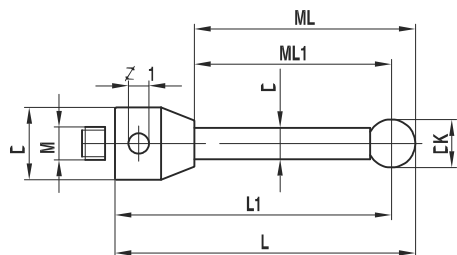


### Ceramic styli with silicon nitride ball

Pos.	itp Order No	analogue Leitz	DK	ML1 ML	DG D	L L1	DS1 DS	EAL B	Weight g
1	TK M5 S80 12 090	-	8,0	74,0/78,0	12,0	94,0/90,0	6,0		16,0
2	TK M5 S80 12 125	M00-694-129-000	8,0	109,0/113,0	12,0	129,0/125,0	6,0		20,0

Glued balls. Special designs on request.

All existing ball materials are available upon request for all styli and all thread sizes.



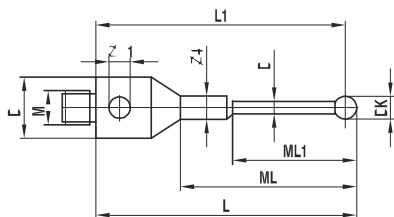
### Micro ball styli, stepped stem

Pos.	itp Order No	analogue Leitz	DK	ML1 ML	DG D	L L1	DS1 DS	EAL B	Weight g
1	FH M5 020 12 066	060-694.150-006	2,0	16,0 / 57,0	12,0	67,0 / 66,0	1,5		12,0

**Thread** M5  
**Material** Stainless steel base, carbide stem, ruby ball

Peg mounted balls. Special designs on request.

All existing ball materials are available upon request for all styli and all thread sizes.



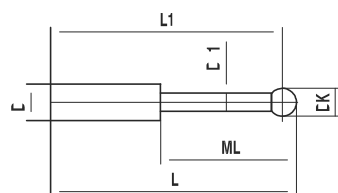
### Styli for holder

Pos.	itp Order No	analogue Leitz	DK	ML1 ML	DG D	L L1	DS1 DS	EAL B	Weight g
1	KT M5 003 02 022	M00-694-067-005	0,3	4,15		22,15 / 22,0	0,2 / 2,0		1,0
2	KT M5 005 02 022	M00-694-064-005	0,5	4,25		22,25 / 22,0	0,3 / 2,0		1,0
3	KT M5 008 02 022	M00-694-063-005	0,8	4,4		22,4 / 22,0	0,6 / 2,0		1,0
4	KT M5 010 02 022	M00-694-062-005	1,0	4,5		22,5 / 22,0	0,8 / 2,0		1,0
5	KT M5 010 02 034	-	1,0	14,5		34,5 / 34,0	0,8 / 2,0		1,0
6	KT M5 015 02 022	060-694.066-000	1,5	10,35		22,75 / 22,0	1,2 / 2,0		1,0
7	KT M5 020 02 022	060-694.065-000	2,0	10,6		23,0 / 22,0	1,5 / 2,0		1,0

**Thread** M5  
**Material** Carbide stem, ruby ball

Peg mounted balls, except for ball- $\varnothing$  0,3mm. Special designs on request.

All existing ball materials are available upon request for all styli and all thread sizes.

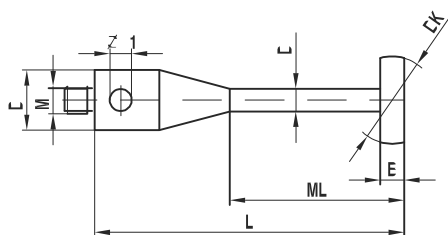


### Spherical disk stylus

Pos.	itp Order No	analogue Leitz	DK	ML1 ML	DG D	L	DS1 DS	EAL B	Weight g
1	KH M5 080 12 056	060-694-152-011	8,0	46,0	12,0	57,0	2,5	1,0	12,0
2	KH M5 100 12 046	-	10,0	35,7	12,0	46,7	3,0	0,7	13,0
3	KH M5 160 12 057	060-694-152-012	16,0	49,5	12,0	60,5	3,5	2,5	18,0

**Thread** M5  
**Material** Stainless steel base, carbide stem, high-strength steel disk

Special designs on request.



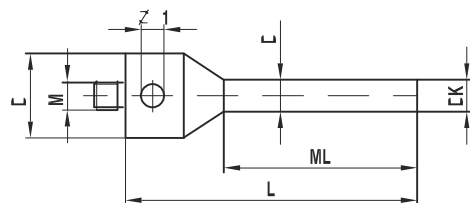
**Cylinder styli**

Pos.	itp Order No	analogue Leitz	DK	ML1 ML	DG D	L	DS1 DS	EAL B	Weight g
1	ZH M5 030 12 050	060-694.152-008	3,0	39,0	12,0	50,0	3,0		14,0

**Thread** M5

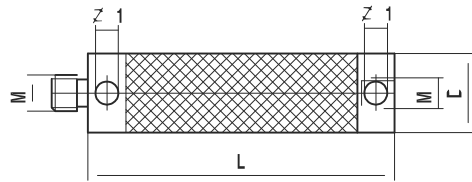
**Material** Stainless steel base, carbide cylinder

Special designs on request.



**Extension**

**Thread** M5  
**Material** Black carbon fibre thermostable, titanium ends



Pos.	itp Order No	analogue Leitz	DK	ML1 ML	DG D	L	DS1 DS	EAL B	Weight g
1	VC M5 TZ0 11 040	-			11,0	40,0			9,0
2	VC M5 TZ0 11 050	-			11,0	50,0			10,0
3	VC M5 TZ0 11 060	-			11,0	60,0			11,0
4	VC M5 TZ0 11 070	-			11,0	70,0			11,0
5	VC M5 TZ0 11 080	-			11,0	80,0			12,0
6	VC M5 TZ0 11 090	-			11,0	90,0			13,0
7	VC M5 TZ0 11 100	-			11,0	100,0			14,0
8	VC M5 TZ0 11 120	-			11,0	120,0			15,0
9	VC M5 TZ0 11 150	-			11,0	150,0			17,0
10	VC M5 TZ0 11 180	-			11,0	180,0			19,0
11	VC M5 TZ0 11 200	-			11,0	200,0			21,0
12	VC M5 TZ0 11 250	-			11,0	250,0			24,0
13	VC M5 TZ0 11 300	-			11,0	300,0			27,0
14	VC M5 TZ0 11 400	-			11,0	400,0			34,0
15	VC M5 TZ0 20 040	-			20,0	40,0			26,0
16	VC M5 TZ0 20 050	-			20,0	50,0			28,0
17	VC M5 TZ0 20 060	-			20,0	60,0			29,0
18	VC M5 TZ0 20 080	-			20,0	80,0			32,0
19	VC M5 TZ0 20 100	-			20,0	100,0			34,0
20	VC M5 TZ0 20 120	-			20,0	120,0			37,0
21	VC M5 TZ0 20 150	-			20,0	150,0			41,0
22	VC M5 TZ0 20 180	-			20,0	180,0			45,0
23	VC M5 TZ0 20 200	-			20,0	200,0			48,0
24	VC M5 TZ0 20 250	-			20,0	250,0			55,0
25	VC M5 TZ0 20 300	-			20,0	300,0			62,0
26	VC M5 TZ0 20 400	-			20,0	400,0			75,0
27	VC M5 TZ0 20 500	-			20,0	500,0			89,0
28	VC M5 TZ0 20 600	-			20,0	600,0			103,0

Special designs on request.

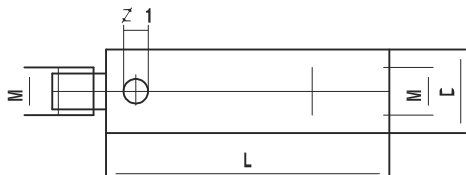
Thermostable carbon fiber made of high tech fibers used in aerospace technology. E-module of approximately 450 GPa.



### Extension

Pos.	itp Order No	analogue Leitz	DK	ML1 ML	DG D	L	DS1 DS	EAL B	Weight g
1	VT M5 000 12 020	060-694.036-000			12,0 *	20,0			15,0
2	VT M5 000 12 040	060-694.035-000			12,0 *	40,0			18,0
3	VT M5 000 12 050	060-813.034-000			12,0 *	50,0			15,0
4	VT M5 000 12 070	060-813.033-000			12,0 *	70,0			17,0
5	VT M5 000 12 100	060-813.032-000			12,0 *	100,0			24,0
6	VT M5 000 18 020	060-694.037-000			18,0	20,0			20,0
7	VT M5 000 18 060	060-694.034-000			18,0	60,0			37,0
8	VT M5 000 18 080	060-694.033-000			18,0	80,0			41,0
9	VT M5 000 18 100	060-694.032-000			18,0	100,0			47,0
10	VT M5 000 18 150	060-694.031-000			18,0	150,0			50,0
11	VT M5 000 18 200	060-694.030-000			18,0	200,0			60,0

**Thread** M5  
**Material** Titanium

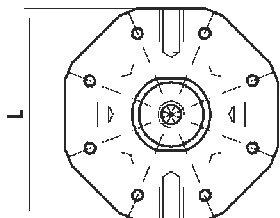


Special designs on request. \*For manufacturing reasons  $\varnothing < 12,0\text{mm}$ .

### Multiple styli holder for PMM and Cygnus X

Pos.	itp Order No	analogue Leitz	DK	ML1 ML	Thickness	L	DS1 DS	Number of styli	Weight g
1	KH M5 L05 13 021	M00-694-081-000			13,0	32,0		5	40,0
2	KH M5 L06 13 021	M00-694-082-000			13,0	40,0		6	80,0
3	KH M5 L07 13 021	M00-694-083-000			13,0	29,0		7	57,0
4	KH M5 L08 13 021	M00-694-084-000			13,0	42,0		8	78,0
5	KH M5 L08 06 017	M00-694-085-000			17,0	88,0		8	250,0

**Thread** M5  
**Material** Titanium

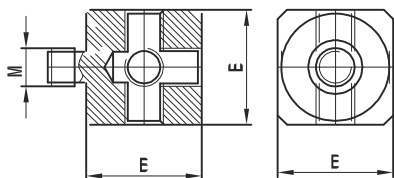


Special designs on request.

### Cube

Pos.	itp Order No	analogue Leitz	DK	ML1 ML	DG D	L	DS1 DS	EAL B	Weight g
1	WT M5 L00 15 000	060-694.016-000						15,0	13,0
2	WT M5 L00 20 000	060-684.044-000						20,0	31,5

**Thread** M5  
**Material** Titanium



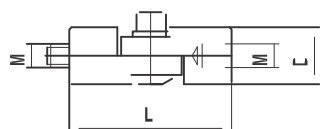
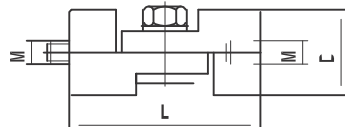
Special designs on request.

### Knuckle

Pos.	itp Order No	analogue Leitz	DK	ML1 ML	DG D	L	DS1 DS	EAL B	Weight g
1	GT M5 000 12 034	060-813-051-000			12,0	34,0			14,0
2	GT M5 000 18 040	-			18,0	40,0			39,0

**Thread** M5  
**Material** Titanium

Special designs on request.

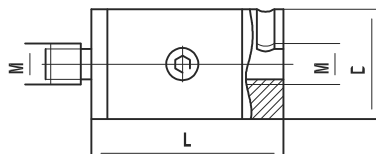


### Rotary knuckle

Pos.	itp Order No	analogue Leitz	DK	ML1 ML	DG D	L	DS1 DS	EAL B	Weight g
1	DS M5 000 14 027	060-813-055-000			14,0	27,0			26,0

**Thread** M5  
**Material** Titanium

Special designs on request.

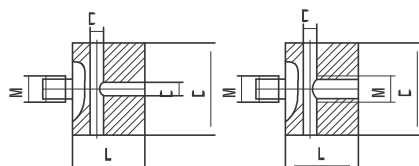


### 5-way holder for styl

Pos.	itp Order No	analogue Leitz	DK	ML1 ML	DG D	L	DS1 DS	Number of holes	Weight g
1	KH M5 000 15 020	060-694.060-000			15,0	10,0	2,0	5	13,0
2	KH M5 000 15 012	M00-694-061-000			15,0	10,0	2,0	4 + M5	13,0

**Thread** M5  
**Material** Titanium

Special designs on request.



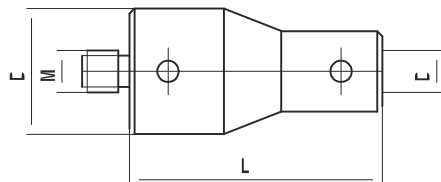
**Holder**

Pos.	itp Order No	analogue Leitz	DK	ML1 ML	DG D	L	DS1 DS	EAL B	Weight g
1	KH M5 000 12 021	M00-694-068-000			12,0	21,0	2,0		14,0

**Thread** M5

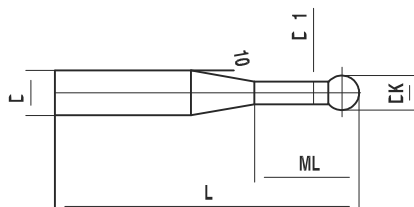
**Material** Titanium

Special designs on request.



### Styli for holder, tapered stem

**Thread** M5  
**Material** Carbide stem, ruby ball



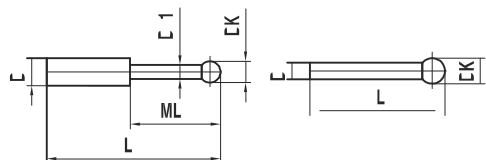
Pos.	itp Order No	analogue Klingelberg	DK	ML1 ML	DG D	L	DS1 DS	EAL B	Weight g
1	KT M5 005 04 035	281784A	0,5	2,75 / 4,75		35,25	0,3/1,0/4,0		3,0
2	KT M5 008 04 035	-	0,8	4,9		35,4	0,6 / 4,0		3,0
3	KT M5 010 04 035	281785A	1,0	5,0		35,5	0,8 / 4,0		3,0
4	KT M5 010 04 060	291448A	1,0	5,0		60,5	0,8 / 4,0		7,0
5	KT M5 015 04 035	281786A - 353112A	1,5	5,25		35,75	1,0 / 4,0		3,0
6	KT M5 015 04 060	280750A	1,5	5,25		60,75	1,0 / 4,0		7,0
7	KT M5 020 04 036	281787A - 353113A	2,0	5,5		36,0	1,2 / 4,0		3,0
8	KT M5 020 04 061	280751A	2,0	8,5		61,0	1,2 / 4,0		8,0
9	KT M5 030 04 036	281788A - 353114A	3,0	9,0		36,5	1,8 / 4,0		3,0
10	KT M5 030 04 061	280752A	3,0	11,5		61,5	1,8 / 4,0		8,0

Peg mounted balls. Special designs on request.

All existing ball materials are available upon request for all styli and all thread sizes.

### Styli for holder

**Thread** M5  
**Material** Carbide stem, ruby ball



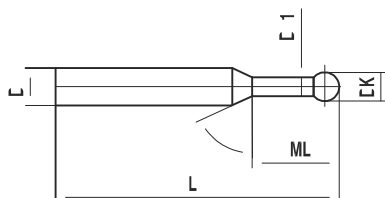
Pos.	itp Order No	analogue Klingelberg	DK	ML1 ML	DG D	L	DS1 DS	EAL B	Weight g
1	KT M5 010 01 016	306627A	1,0	5,0		16,0	0,8 / 1,0		1,0
2	KT SO 015 10 016	306628A	1,5			16,0	1,0		1,0
3	KT SO 020 10 016	306629A	2,0			16,0	1,0		1,0
4	KT M5 050 04 037	148669A	5,0	12,5		37,5	3,0 / 4,0		3,0
5	KT M5 050 04 062	280753A	5,0			62,5	4,0		8,0
6	KT M5 070 04 038	283849A	7,0			38,5	4,0		6,0
7	KT M5 100 04 040	283850A	10,0			40,0	4,0		6,0

Peg mounted balls. Special designs on request.

All existing ball materials are available upon request for all styli and all thread sizes.

### Styli for holder, tapered stem

**Thread** M5  
**Material** Carbide stem, ruby ball



Pos.	itp Order No	analogue Klingelberg	DK	ML1 ML	DG D	L	DS1 DS	EAL B	Weight g
1	KT M5 003 01 015/65°	337835 A	0,3	2,3		15,3	0,2 / 1,0		1,0
2	KT M5 005 01 015/65°	337839 A	0,5	2,5		15,5	0,3 / 1,0		1,0

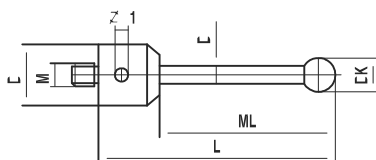
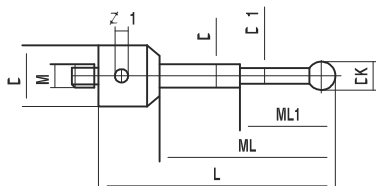
Peg mounted balls, except for ball-Ø 0,3mm. Special designs on request.

All existing ball materials are available upon request for all styli and all thread sizes.

### Long threaded styli, thread lengths 5,0mm

Pos.	itp Order No	analogue Klingelberg	DK	ML1 ML	DG D	L	DS1 DS	EAL B	Weight g
1	NH M5 K15 11 033	309524A	1,5	7,0 / 24,0	11,0	33,0	1,0 / 1,5		7,0
2	NH M5 020 11 033	309523A	2,0	24,5	11,0	33,0	1,5		7,0

**Thread** M5  
**Material** Stainless steel base, carbide stem, ruby ball

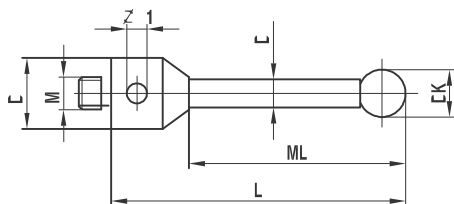


Peg mounted balls. Special designs on request.  
 All existing ball materials are available upon request for all styli and all thread sizes.

### Carbide styli

Pos.	itp Order No	analogue Klingelberg	DK	ML1 ML	DG D	L	DS1 DS	EAL B	Weight g
1	TH M5 030 11 033	306630A	3,0	23,5	11,0	33,5	2,0		4,5
2	TH M5 050 11 053	306631A	5,0	43,0	11,0	53,0	3,5		9,8

**Thread** M5  
**Material** Titanium base, carbide stem, ruby ball

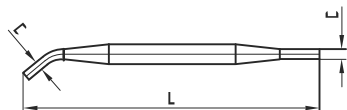


Peg mounted balls. Special designs on request.  
 All existing ball materials are available upon request for all styli and all thread sizes.

### Pin-type wrench

Pos.	itp Order No	analogue Klingelberg	DK	ML1 ML	DG D	L	DS1 DS	EAL B	Weight g
1	MI MO 017 00 049	306639 A			1,7	49,0			
2	MI MO 029 00 070	306640 A			2,9	70,0			

**Thread** M4/M5  
**Material** Stainless steel



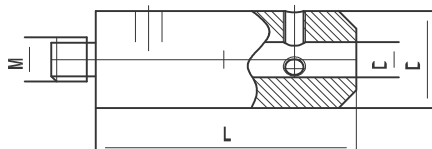
Special designs on request.

### Holder for styli

Pos.	itp Order No	analogue Klingelberg	DK	ML1 ML	DG D	L	DS1 DS	EAL B	Weight g
1	KH M5 000 30 040	306711A			11,0	29,5	4,0		23,0

**Thread** M5  
**Material** Titanium

For styli with DS 4,0mm. Special designs on request.

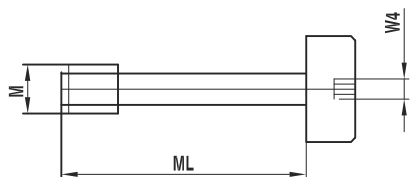


### Screw for cube and spherical disk

Pos.	itp Order No	analogue Klingelberg	DK	ML1 ML	DG D	L	DS1 DS	EAL B	Weight g
1	SI M5 000 21 000	306619A		21,0					3,0

**Thread** M5  
**Material** Stainless steel

Special designs on request.

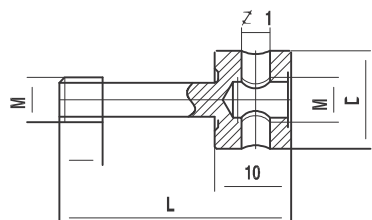


### Threaded extension for cube

Pos.	itp Order No	analogue Klingelberg	DK	ML1 ML	DG D	L	DS1 DS	EAL B	Weight g
1	VT M5 SGO 11 010	309526A			11,0	30,0			4,5

**Thread** M5  
**Material** Titanium

Special designs on request.

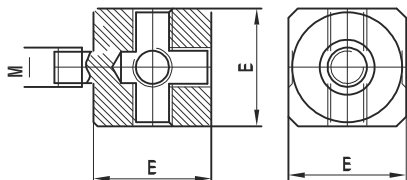


### Cube

Pos.	itp Order No	analogue Klingenberg	DK	ML1 ML	DG D	L	DS1 DS	EAL B	Weight g
1	WT M5 000 15 000	306618A						15,0	12,6

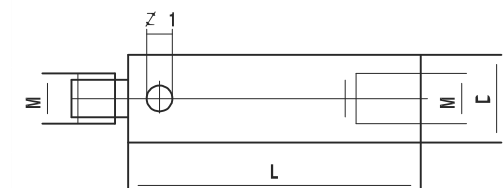
**Thread** M5  
**Material** Titanium

Special designs on request.



### Extension

Pos.	itp Order No	analogue Klingenberg	DK	ML1 ML	DG D	L	DS1 DS	EAL B	Weight g
1	VT M5 000 11 010	306604A			11,0	10,0			3,9
2	VT M5 000 11 015	306605A			11,0	15,0			5,7
3	VT M5 000 11 020	306606A			11,0	20,0			7,5
4	VT M5 000 11 025	306607A			11,0	25,0			9,5
5	VT M5 000 11 030	309529A			11,0	30,0			9,8
6	VT M5 000 11 035	306608A			11,0	35,0			10,0
7	VT M5 000 11 040	306609A			11,0	40,0			12,6
8	VT M5 000 11 050	306610A			11,0	50,0			13,2
9	VT M5 000 11 060	306611A			11,0	60,0			14,2
10	VT M5 000 11 075	306612A			11,0	75,0			15,3
11	VT M5 000 11 080	306613A			11,0	80,0			15,6
12	VT M5 000 11 090	306614A			11,0	90,0			16,5
13	VT M5 000 11 100	306615A			11,0	100,0			17,2



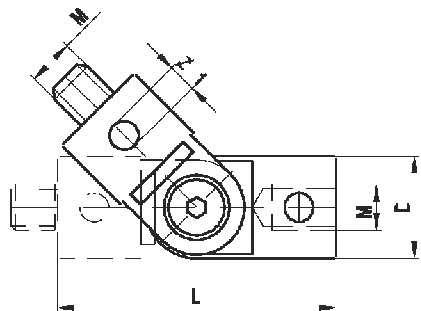
Special designs on request.

**Rotary knuckle, swing range 180°**

Pos.	itp Order No	analogue Klingelberg	DK	ML1 ML	DG D	L	DS1 DS	EAL B	Weight g
1	GT M5 000 11 030	309525A			11,0	30,0			11,2

**Thread** M5  
**Material** Titanium

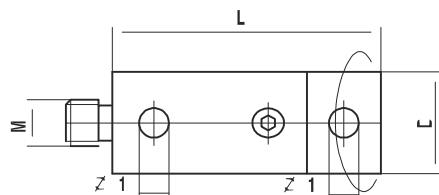
Special designs on request.


**Rotary adapter**

Pos.	itp Order No	analogue Klingelberg	DK	ML1 ML	DG D	L	DS1 DS	EAL B	Weight g
1	DT M5 000 11 029	309522A			11,0	29,0			13,0

**Thread** M5  
**Material** Titanium

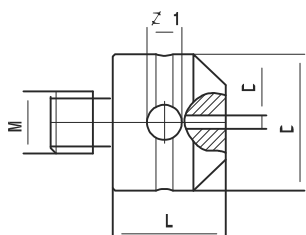
Special designs on request.


**1-way holder for styli**

Pos.	itp Order No	analogue Klingelberg	DK	ML1 ML	DG D	L	DS1 DS	EAL B	Weight g
1	SH M5 000 11 010	309520A			11,0	10,0	1,0		3,2

**Thread** M5  
**Material** Stainless steel

Special designs on request.





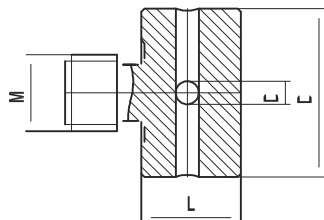
### 2-way holder for styli

Pos.	itp Order No	analogue Klingelberg	DK	ML1 ML	DG D	L	DS1 DS	EAL B	Weight g
1	KH M5 000 20 010	306622A			10,0	6,0	1,0		3,0

**Thread** M5

**Material** Stainless steel

Special designs on request.



### Holder 90° for styli

Pos.	itp Order No	analogue Klingelberg	DK	ML1 ML	DG D	L	DS DS1	EAL B	Weight g
1	KI M5 115 11 045	306624A			11,0	45,0	6,0 / 1,0-1,5		16,0

**Thread** M5

**Material** Stainless steel

Special designs on request.

