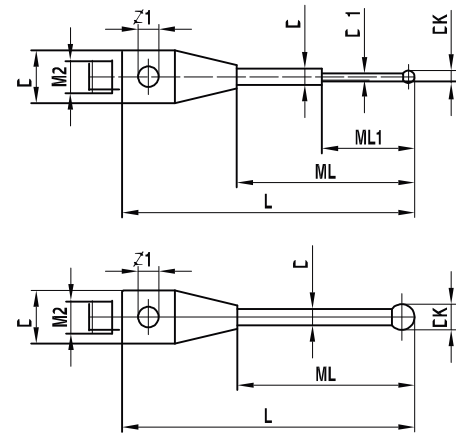
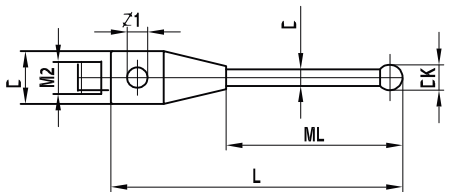


Carbide styli		Pos.	itp Order No	analogue Zeiss	Renishaw Order No	DK	ML1 ML	DG D	L	DS1 DS	EAL B	Weight g
<b>Thread</b>	M2	1	TH M2 002 03 017	-	-	0,2	2,3/12,5	3,0	17,0	0,18/1,0		0,4
<b>Material</b>	Stainless steel base, carbide stem, ruby ball	2	TH M2 0025 03 017	-	-	0,25	2,3/12,5	3,0	17,0	0,18/1,0		0,4
		3	TH M2 003 03 018	-	-	0,3	2,3/13,5	3,0	18,0	0,2/1,0		0,4
		4	TH M2 005 03 018	-	-	0,5	2,5/13,5	3,0	18,0	0,3/1,0		0,4
		5	TH M2 006 03 018	-	-	0,6	4,6/13,8	3,0	18,3	0,4/1,0		0,4
		6	TH M2 008 03 018	-	-	0,8	4,8/13,8	3,0	18,3	0,6/1,0		0,4
		7	TH M2 010 03 010	602030-8006-000	A-5555-0308	1,0	6,5	3,0	10,5	0,8		0,3
		8	TH M2 010 03 015	-	A-5555-0309	1,0	11,5	3,0	15,5	0,8		0,3
		9	TH M2 010 03 018	-	-	1,0	5,0/14,0	3,0	18,5	0,8/1,0		0,4
		10	TH M2 020 63 011	602030-8001-000	A-5555-0282	2,0	5,0	3,0	11,0	1,0		1,0
		11	TH M2 020 03 011	602030-8008-000	A-5555-0310	2,0	7,0	3,0	11,0	1,0		1,0
		12	TH M2 020 03 016	602030-8009-000	A-5555-0311	2,0	12,0	3,0	16,0	1,0		1,0
		13	TH M2 020 03 021	602030-8005-000	A-5555-0281	2,0	15,0	3,0	21,0	1,0		1,0
		14	TH M2 025 03 012	-	-	2,5	6,0	3,0	12,0	1,5		1,0
		15	TH M2 030 03 012	-	-	3,0	6,0	3,0	12,0	2,0		1,0
		16	TH M2 030 03 021	602030-8003-000	A-5003-0938	3,0	15,5	3,0	21,5	1,5		1,0
		17	TH M2 040 03 012	602030-8015-000	A-5555-0312	4,0	8,0	3,0	12,0	2,5		1,0
		18	TH M2 040 03 022	602030-8016-000	A-5555-0313	4,0	18,0	3,0	22,0	2,5		1,0
		19	TH M2 050 03 022	602030-8034-000	A-5555-0283	5,0	16,5	3,0	22,5	2,0		1,0



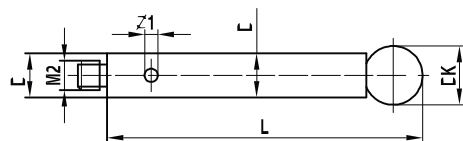
Peg mounted balls, except for ball-Ø 0,2mm - 0,3mm. Special designs on request.  
All existing ball materials are available upon request for all styli and all thread sizes.

Ceramic styli		Pos.	itp Order No	analogue Zeiss	Renishaw Order No	DK	ML1 ML	DG D	L	DS1 DS	EAL B	Weight g
<b>Thread</b>	M2	1	TK M2 040 03 016	-	-	4,0	12,0	3,0	16,0	2,0		0,8
<b>Material</b>	Stainless steel base, ceramic stem, ruby ball	2	TK M2 040 03 036	-	-	4,0	30,0	3,0	36,0	2,0		1,0
		3	TK M2 050 03 014	-	-	5,0	10,0	3,0	14,0	2,0		0,8
		4	TK M2 050 03 022	-	A-5555-0279	5,0	16,5	3,0	22,5	2,0		1,0
		5	TK M2 050 03 038	-	-	5,0	32,0	3,0	38,0	2,0		1,0
		6	TK M2 060 03 013	602030-8002-000	A-5555-0278	6,0	9,0	3,0	13,0	2,0		1,0



Peg mounted balls. Special designs on request.  
All existing ball materials are available upon request for all styli and all thread sizes.

Steel styli		Pos.	itp Order No	analogue Zeiss	Renishaw Order No	DK	ML1 ML	DG D	L	DS1 DS	EAL B	Weight g
<b>Thread</b>	M2	1	TI M2 040 03 032	-	-	4,0	32,0	3,0	32,0	3,0		1,7
<b>Material</b>	Stainless steel base and stem, ruby ball	2	TI M2 040 03 042	-	-	4,0	42,0	3,0	42,0	3,0		2,4
		3	TI M2 040 03 052	-	-	4,0	52,0	3,0	52,0	3,0		2,9
		4	TI M2 050 03 022	-	-	5,0	22,0	3,0	22,0	3,0		1,3
		5	TI M2 050 03 032	-	-	5,0	32,0	3,0	32,0	3,0		1,9
		6	TI M2 050 03 042	-	-	5,0	42,5	3,0	42,5	3,0		2,5
		7	TI M2 050 03 052	-	-	5,0	52,5	3,0	52,5	3,0		3,1
		8	TI M2 060 03 013	-	A-5555-0314	6,0	13,0	3,0	13,0	3,0		0,9
		9	TI M2 060 03 028	-	A-5555-0315	6,0	28,0	3,0	28,0	3,0		1,8
		10	TI M2 080 03 013	-	A-5555-0316	8,0	13,0	3,0	13,0	3,0		2,0



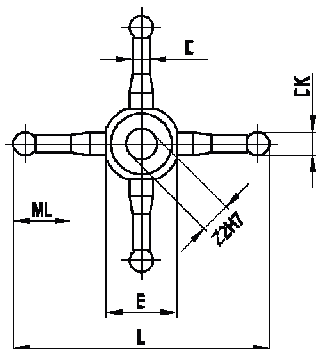
Peg mounted balls. Special designs on request.

All existing ball materials are available upon request for all styli and all thread sizes.

Star styli		Pos.	itp Order No	analogue Zeiss	Renishaw Order No	DK	ML1 ML	DG D	L	DS1 DS	EAL B	Weight g
<b>Thread</b>	M2	1	SI M2 020 06 022	602030-8010-000	A-5555-0295	2,0	4,5		22,0	1,4	5,5	1,0
<b>Material</b>	Stainless steel cube base and stems, ruby balls	2	SI M2 020 06 032	602030-8011-000	A-5555-0294	2,0	9,5		32,0	1,4	5,5	1,0

Peg mounted balls. Special designs on request.

All existing ball materials are available upon request for all styli and all thread sizes.

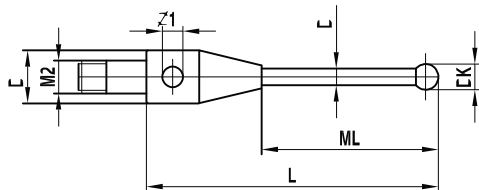


### Styli for star configuration

Pos.	itp Order No	analogue Zeiss	Renishaw Order No	DK	ML1 ML	DG D	L	DS1 DS	EAL B	Weight g
1	SI M2 020 03 019	602030-8012-000	A-5555-0296	2,0	13,5	3,0	19,5	1,5		1,0

**Thread** M2  
**Material** Stainless steel base and stem, ruby ball

Peg mounted balls. Special designs on request.  
 Silicon nitride and zirconium oxide balls are available upon request for all styli and all thread sizes.

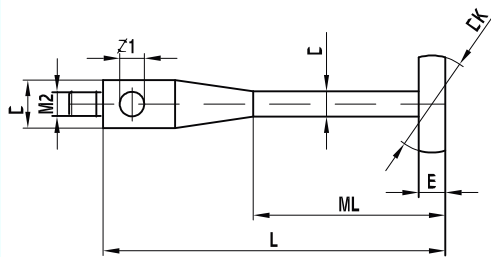


### Spherical disk styli

Pos.	itp Order No	analogue Zeiss	Renishaw Order No	DK	ML1 ML	DG D	L	DS1 DS	EAL B	Weight g
1	KK M2 040 03 032	602030-8202-000	A-5555-0298	4,0	19,0	3,0	32,0	1,0	1,0	1,0
2	KK M2 080 03 032	602030-8201-000	A-5555-0297	8,0	19,0	3,0	32,0	1,5	1,5	1,0

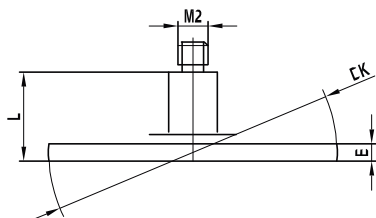
**Thread** M2  
**Material** Stainless steel base, carbide stem, ceramic disk

Special designs on request.



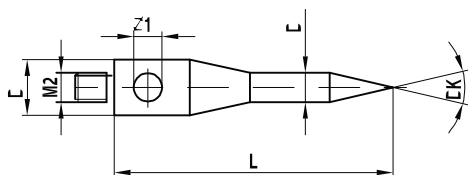
Spherical disk styli		Pos.	itp Order No	analogue Zeiss	Renishaw Order No	DK	ML1 ML	DG D	L	DS1 DS	EAL B	Weight g
<b>Thread</b>	M2	1	KI M2 140 20 005	602030-8203-000	A-5555-0299	14,0			5,5		2,0	1,0
<b>Material</b>	Stainless steel base and stem, ceramic disk	2	KI M2 200 25 005	602030-8204-000	A-5555-0300	20,0			5,5		2,5	3,0

Special designs on request.



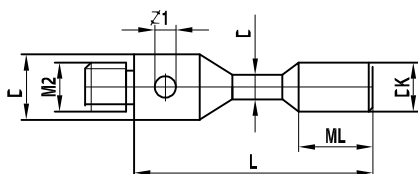
Pointer styli		Pos.	itp Order No	analogue Zeiss	Renishaw Order No	DK	ML1 ML	DG D	L	DS1 DS	EAL B	Weight g
<b>Thread</b>	M2	1	IH M2 030 03 010	602030-8342-000	A-5555-0317	30°		3,0	10,0	1,5		1,0
<b>Material</b>	Stainless steel base, cone point carbide	2	IH M2 060 03 010	-	A-5555-0318	60°		3,0	10,0	1,5		1,0

Special designs on request.



Cylinder styli		Pos.	itp Order No	analogue Zeiss	Renishaw Order No	DK	ML1 ML	DG D	L	DS1 DS	EAL B	Weight g
<b>Thread</b>	M2	1	ZH M2 015 03 011	602030-8096-000	-	1,5	1,5	3,0	11,0	1,0		0,3
<b>Material</b>	Stainless steel base, carbide stem and cylinder	2	ZH M2 030 03 013	602030-8098-000	-	3,0	4,0	3,0	13,0	1,5		0,6

Special designs on request.



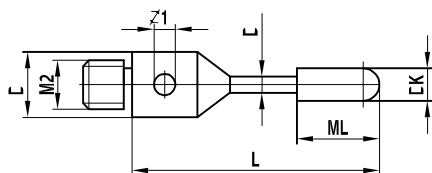
**Cylinder styli**

Pos.	itp Order No	analogue Zeiss	Renishaw Order No	DK	ML1 ML	DG D	L	DS1 DS	EAL B	Weight g
1	ZR M2 020 03 020	602030-8100-000	-	2,0	7,0	3,0	20,0	1,5		0,6

**Thread** M2

**Material** Stainless steel base, carbide stem, ruby cylinder

Special designs on request.

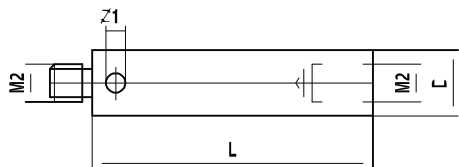

**Extension**

Pos.	itp Order No	analogue Zeiss	Renishaw Order No	DK	ML1 ML	DG D	L	DS1 DS	EAL B	Weight g
1	VI M2 000 03 005	602030-8321-000	M-5000-7634			3,0	5,0			0,2
2	VI M2 000 03 010	602030-8322-000	M-5000-3647			3,0	10,0			0,5
3	VI M2 000 03 020	602030-8323-000	M-5000-3648			3,0	20,0			1,0
4	VI M2 000 03 030	602030-8324-000	M-5000-4162			3,0	30,0			1,4
5	VI M2 000 03 035	-	-			3,0	35,0			1,8
6	VI M2 000 03 040	602030-8325-000	M-5000-7779			3,0	40,0			2,2
7	VI M2 000 03 050	-	-			3,0	50,0			2,7

**Thread** M2

**Material** Stainless steel

Special designs on request.

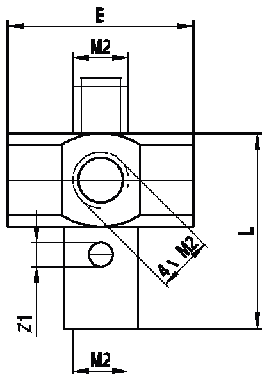


**5-way holder, rotary**

Pos.	itp Order No	analogue Zeiss	Renishaw Order No	DK	ML1 ML	DG D	L	DS1 DS	EAL B	Weight g
1	HI M2 000 07 008	602030-8381-000	A-5000-3627				7,5		7,0	1,2

**Thread** M2  
**Material** Stainless steel

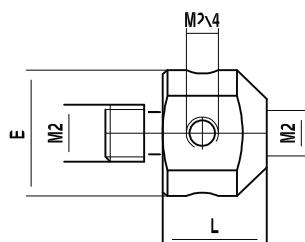
Special designs on request.


**5-way holder, small/large**

Pos.	itp Order No	analogue Zeiss	Renishaw Order No	DK	ML1 ML	DG D	L	DS1 DS	EAL B	Weight g
1	HI M2 000 07 005	602030-9103-000	A-5555-0320				5,4		7,0	1,0
2	HI M2 000 10 009	602030-9104-000	A-5555-0319				9,1		10,5	3,4

**Thread** M2  
**Material** Stainless steel

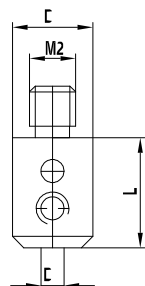
Special designs on request.



**Holder for styli**

Pos.	itp Order No	analogue Zeiss	Renishaw Order No	DK	ML1 ML	DG D	L	DS1 DS	EAL B	Weight g
1	KH M2 010 06 008	-	-			6,0	8,0	1,0		1,0
2	KH M2 015 06 008	-	-			6,0	8,0	1,5		1,0
3	KH M2 020 06 008	-	-			6,0	8,0	2,0		1,0

**Thread** M2

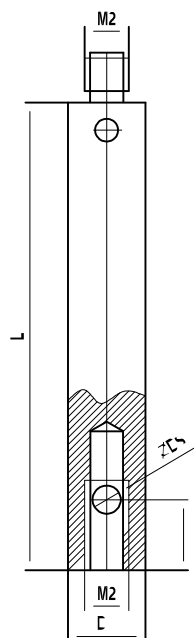
**Material** Stainless steel


Special designs on request.

**Holder 90° for styli**

Pos.	itp Order No	analogue Zeiss	Renishaw Order No	DK	ML1 ML	DG D	L	DS1 DS	EAL B	Weight g
1	KH M2 010 03 030	-	-			3,0	30,0	1,0		2,9
2	KH M2 015 03 030	-	-			3,0	30,0	1,5		2,9

**Thread** M2

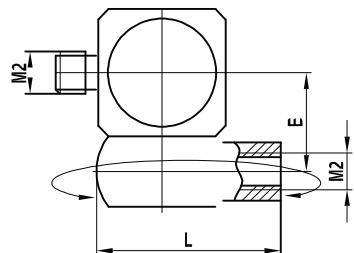
**Material** Stainless steel


Special designs on request.

Rotary knuckle		Pos.	itp Order No	analogue Zeiss	Renishaw Order No	DK	ML1 ML	DG D	L	DS1 DS	EAL B	Weight g
<b>Thread</b>	M2	1	DI M2 000 04 008	602030-9101-000	A-5000-7534				8,0		4,5	2,0

**Material** Stainless steel

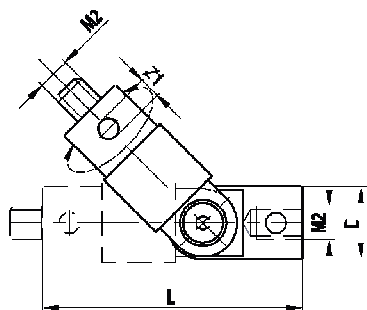
Special designs on request.



Rotary knuckle, slewing range 360°, swing range 180°		Pos.	itp Order No	analogue Zeiss	Renishaw Order No	DK	ML1 ML	DG D	L	DS1 DS	EAL B	Weight g
<b>Thread</b>	M2	1	GI M2 000 04 016	602030-9105-000	A-5000-9902			4,0	16,5			1,5

**Material** Stainless steel

Special designs on request.



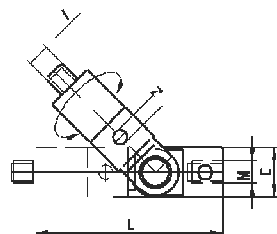


**Rotary knuckle, slewing range 360°, swing range 180°**

Pos.	itp Order No	analogue Renishaw	Short Desig.	DK	ML1 ML	DG D	L	DS1 DS	EAL B	Weight g
1	GI M3 000 04 017	A-5003-4686	-			4,0	17,0			1,5

**Thread** M3  
**Material** Stainless steel

Special designs on request.

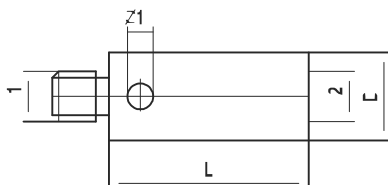


**Adapter**

Pos.	itp Order No	analogue Renishaw	Short Desig.	DK	ML1 ML	DG D	L	DS1 DS	G1G2	Weight g
1	RI M3 000 04 005	M-5000-4163	SA3			4,0	5,0		M3/M2	0,5
2	RI M2 000 04 005	-	-			4,0	5,0		M2/M3	0,5
3	RI M2 000 04 007	M-5000-4164	SA2			4,0	7,0		M2/M3	0,5

**Thread** M3/M2  
**Material** Stainless steel

Special designs on request.

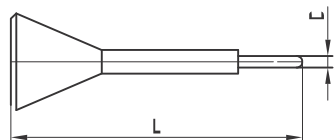


**Pin tool**

Pos.	itp Order No	analogue Renishaw	Short Desig.	DK	ML1 ML	DG D	L	DS1 DS	EAL B	Weight g
1	MI MO 012 00 023	M-5000-3540	-			1,2	23,0			

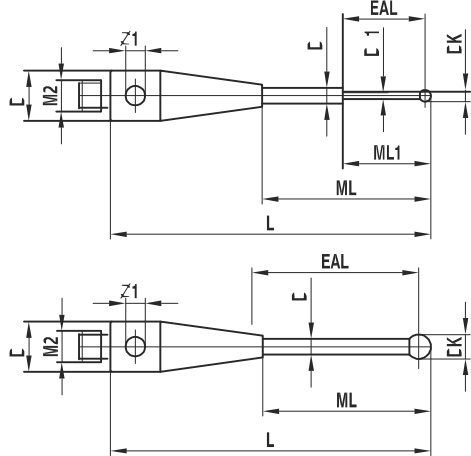
**Thread** M2/M3  
**Material** Stainless steel

Special designs on request.



**Carbide styli**

**Thread** M2  
**Material** Stainless steel base, carbide stem, ruby ball



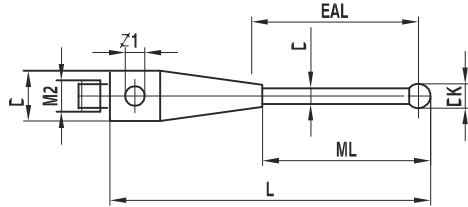
Pos.	itp Order No	analogue Renishaw	Short Desig.	DK	ML1 ML	DG D	L	DS1 DS	EAL B	Weight g
1	TH M2 002 03 010	-	-	0,2	2,3/4,15	3,0	10,15	0,18/1,0	2,3	0,3
2	TH M2 0025 03 010	-	-	0,25	2,3/4,15	3,0	10,15	0,18/1,0	2,3	0,3
3	TH M2 003 03 010	A-5000-7800	PS29R	0,3	2,15/4,15	3,0	10,15	0,2/0,7	2,0	0,3
4	TH M2 005 03 010	A-5000-7805	PS10R	0,5	3,25/4,25	3,0	10,25	0,4/0,7	3,0	0,3
5	TH M2 005 03 020	A-5003-1345	-	0,5	7,25	3,0	20,25	0,3	7,0	0,3
6	TH M2 007 03 010	A-5000-7801	PS31R	0,7	4,35	3,0	10,35	0,5	4,0	0,3
7	TH M2 007 03 020	A-5003-0577	-	0,7	12,35	3,0	20,35	0,5	12,0	0,3
8	TH M2 010 R3 010	A-5003-1325	-	1,0	4,5	3,0	10,5	0,7	4,0	0,3
9	TH M2 010 03 020	A-5000-7808	PS23R	1,0	7,5	3,0	20,5	0,7	7,0	0,6
10	TH M2 010 03 021	A-5003-0033	PS48R	1,0	13,0	3,0	20,5	0,8	12,5	0,4
11	TH M2 010 03 027	A-5000-8663	PS51R	1,0	20,5	3,0	27,5	0,7	20,5	0,4
12	TH M2 015 03 021	A-5003-0034	PS49R	1,5	13,25	3,0	20,75	1,0	12,5	0,5
13	TH M2 015 03 031	A-5003-0035	PS52R	1,5	23,25	3,0	30,75	1,0	22,5	0,6
14	TH M2 020 R3 021	A-5003-3822	-	2,0	13,0	3,0	21,0	1,0	12,0	0,5
15	TH M2 020 03 031	A-5003-0036	PS53R	2,0	23,5	3,0	31,0	1,5	22,5	1,0
16	TH M2 020 03 041	A-5003-0037	PS58R	2,0	33,5	3,0	41,0	1,5	35,0	1,3
17	TH M2 025 03 021	A-5003-1896	-	2,5	13,75	3,0	21,25	1,0	15,5	0,5
18	TH M2 025 03 031	A-5003-0038	PS54R	2,5	23,75	3,0	31,25	2,0	25,0	1,5
19	TH M2 025 03 041	A-5003-0039	PS59R	2,5	33,75	3,0	41,25	2,0	35,0	2,0
20	TH M2 030 03 021	A-5003-0938	-	3,0	15,5	3,0	21,5	1,5	20,0	0,8
21	TH M2 030 03 032	A-5003-0040	PS55R	3,0	24,0	3,0	31,5	2,0	25,0	1,5
22	TH M2 030 03 042	A-5003-0041	PS60R	3,0	34,0	3,0	41,5	2,0	35,0	2,0
23	TH M2 030 03 051	A-5003-0042	PS63R	3,0	44,0	3,0	51,5	2,0	42,5	2,5
24	TH M2 040 03 024	A-5003-1029	-	4,0	17,0	3,0	24,0	2,0	22,0	1,2
25	TH M2 040 03 032	A-5003-0043	PS56R	4,0	24,5	3,0	32,0	2,0	30,0	1,6
26	TH M2 040 03 042	A-5003-0044	PS61R	4,0	34,5	3,0	42,0	2,0	40,0	2,1
27	TH M2 040 03 052	A-5003-0045	PS64R	4,0	44,5	3,0	52,0	2,0	50,0	2,5
28	TH M2 050 03 022	A-5003-0046	PS50R	5,0	16,5	3,0	22,5	2,0	20,0	2,0
29	TH M2 050 03 032	A-5003-0047	PS57R	5,0	25,0	3,0	32,5	2,5	30,0	2,6
30	TH M2 050 03 042	A-5003-0048	PS62R	5,0	35,0	3,0	42,5	2,5	40,0	3,2
31	TH M2 050 03 052	A-5003-0049	PS65R	5,0	45,0	3,0	52,5	2,5	50,0	3,8

Peg mounted balls, except for ball-Ø 0,2mm - 0,3mm. Special designs on request.

All existing ball materials are available upon request for all styli and all thread sizes.

### Carbide styli with silicon nitride ball

**Thread** M2  
**Material** Stainless steel base, carbide stem, silicon nitride ball



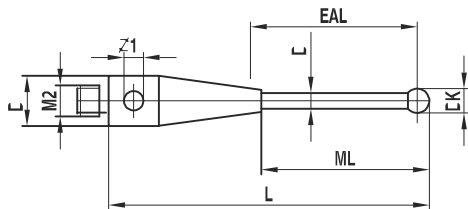
Pos.	itp Order No	analogue Renishaw	Short Desig.	DK	ML1 ML	DG D	L	DS1 DS	EAL B	Weight g
1	TH M2 S10 03 020	-	-	1,0	7,5	3,0	20,5	0,7	7,0	0,6
2	TH M2 S10 03 021	-	-	1,0	13,0	3,0	20,5	0,8	12,5	0,4
3	TH M2 S10 03 027	-	-	1,0	20,5	3,0	27,5	0,7	20,5	0,4
4	TH M2 S15 03 021	-	-	1,5	13,25	3,0	20,75	1,0	15,0	0,5
5	TH M2 S15 03 031	-	-	1,5	23,25	3,0	30,75	1,0	25,0	0,6
6	TH M2 S20 03 031	-	-	2,0	23,5	3,0	31,0	1,5	25,0	1,0
7	TH M2 S20 03 041	-	-	2,0	33,5	3,0	41,0	1,5	35,0	1,3
8	TH M2 S25 03 031	-	-	2,5	23,75	3,0	31,25	2,0	25,0	1,5
9	TH M2 S25 03 041	-	-	2,5	33,75	3,0	41,25	2,0	35,0	2,0
10	TH M2 S30 03 032	-	-	3,0	24,0	3,0	31,5	2,0	25,0	1,5
11	TH M2 S30 03 042	-	-	3,0	34,0	3,0	41,5	2,0	35,0	2,0
12	TH M2 S30 03 051	-	-	3,0	44,0	3,0	51,5	2,0	42,5	2,5
13	TH M2 S40 03 032	-	-	4,0	24,5	3,0	32,0	2,0	30,0	1,6
14	TH M2 S40 03 042	-	-	4,0	34,5	3,0	42,0	2,0	40,0	2,1
15	TH M2 S40 03 052	-	-	4,0	44,5	3,0	52,0	2,0	50,0	2,5
16	TH M2 S50 03 022	-	-	5,0	16,5	3,0	22,5	2,0	20,0	2,0
17	TH M2 S50 03 032	-	-	5,0	25,0	3,0	32,5	2,5	30,0	2,6
18	TH M2 S50 03 042	-	-	5,0	35,0	3,0	42,5	2,5	40,0	3,2
19	TH M2 S50 03 052	-	-	5,0	45,0	3,0	52,5	2,5	50,0	3,8

Peg mounted balls. Special designs on request.

All existing ball materials are available upon request for all styli and all thread sizes.

### Ceramic stylus

**Thread** M2  
**Material** Stainless steel base, ceramic stem, ruby ball



Pos.	itp Order No	analogue Renishaw	Short Desig.	DK	ML1 ML	DG D	L	DS1 DS	EAL B	Weight g
1	TK M2 030 03 031	A-5003-4177	-	3,0	24,0	3,0	31,5	2,0	27,5	0,4
2	TK M2 030 03 051	A-5003-0064	PS66R	3,0	44,0	3,0	51,5	2,0	42,5	0,8
3	TK M2 040 03 032	A-5003-1370	-	4,0	24,5	3,0	32,0	2,0	30,0	0,7
4	TK M2 040 03 052	A-5003-0065	PS67R	4,0	44,5	3,0	52,0	2,0	50,0	0,9
5	TK M2 050 03 032	A-5003-4779	-	5,0	25,0	3,0	32,5	2,5	30,0	0,9
6	TK M2 050 03 053	A-5003-0066	PS68R	5,0	45,0	3,0	52,5	2,5	50,0	1,0
7	TK M2 060 03 033	A-5003-4780	-	6,0	25,5	3,0	33,0	2,5	30,0	1,1
8	TK M2 060 03 053	A-5003-0470	-	6,0	45,5	3,0	53,0	2,5	50,0	1,5

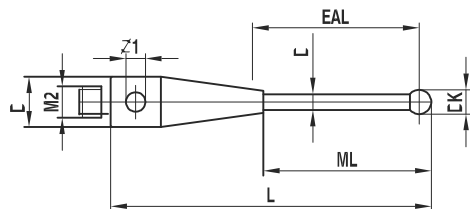
Peg mounted balls. Special designs on request.

All existing ball materials are available upon request for all styli and all thread sizes.

### Ceramic styli with silicon nitride ball

Pos.	itp Order No	analogue Renishaw	Short Desig.	DK	ML1 ML	DG D	L	DS1 DS	EAL B	Weight g
1	TK M2 S30 03 051	-	-	3,0	44,0	3,0	51,5	2,0	42,5	0,8
2	TK M2 S40 03 052	-	-	4,0	44,5	3,0	52,0	2,0	50,0	0,9
3	TK M2 S50 03 053	-	-	5,0	45,0	3,0	52,5	2,5	50,0	1,0

**Thread** M2  
**Material** Stainless steel base, ceramic stem, silicon nitride ball



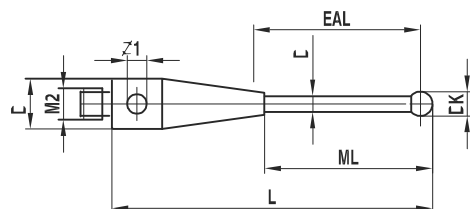
Peg mounted balls. Special designs on request.

All existing ball materials are available upon request for all styli and all thread sizes.

### Steel styli

Pos.	itp Order No	analogue Renishaw	Short Desig.	DK	ML1 ML	DG D	L	DS1 DS	EAL B	Weight g
1	TI M2 010 03 010	A-5000-7806	PS9R	1,0	5,0	3,0	10,5	0,7	4,5	0,3
2	TI M2 015 03 011	A-5000-7802	PS24R	1,5	5,0	3,0	10,75	0,7	4,5	0,3
3	TI M2 020 03 011	A-5000-7807	PS8R	2,0	6,0	3,0	11,0	1,0	6,0	0,3
4	TI M2 020 03 021	A-5000-3603	PS2R	2,0	14,5	3,0	21,0	1,4	14,0	0,4
5	TI M2 025 03 011	A-5000-7803	PS26R	2,5	6,5	3,0	11,25	1,0	6,0	0,3
6	TI M2 025 03 021	A-5000-7804	PS27R	2,5	15,0	3,0	21,25	1,4	14,0	0,4
7	TI M2 030 03 011	A-5000-3604	PS1R	3,0	6,0	3,0	11,5	1,5	7,5	0,4
8	TI M2 030 03 021	A-5000-4160	PS16R	3,0	15,0	3,0	21,5	1,5	17,5	0,5
9	TI M2 040 03 012	A-5000-4154	PS12R	4,0	7,0	3,0	12,0	1,5	10,0	0,4
10	TI M2 040 03 022	A-5000-4161	PS17R	4,0	15,0	3,0	22,0	1,5	20,0	0,6
11	TI M2 050 03 012	A-5000-4155	PS13R	5,0	8,5	3,0	12,5	2,5	10,0	0,7
12	TI M2 060 R3 013	A-5000-4156	PS14R	6,0	9,0	3,0	13,0	2,5	10,0	0,9
13	TI M2 080 03 015	A-5000-4158	PS15R	8,0	11,0	3,0	15,0	2,5	11,0	1,5

**Thread** M2  
**Material** Stainless steel base and stem, ruby ball



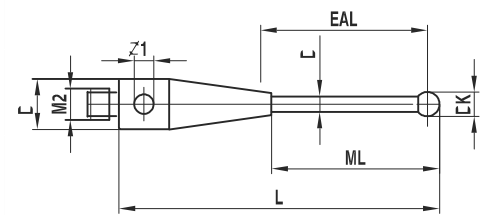
Peg mounted balls. Special designs on request.

All existing ball materials are available upon request for all styli and all thread sizes.

### Steel styli with silicon nitride ball

Pos.	itp Order No	analogue Renishaw	Short Desig.	DK	ML1 ML	DG D	L	DS1 DS	EAL	Weight g
1	TI M2 S10 03 010	-	-	1,0	5,0	3,0	10,5	0,7	4,5	0,3
2	TI M2 S15 03 011	-	-	1,5	5,0	3,0	10,75	0,7	4,5	0,3
3	TI M2 S20 03 011	-	-	2,0	6,0	3,0	11,0	1,0	6,0	0,3
4	TI M2 S20 03 021	-	-	2,0	14,5	3,0	21,0	1,4	14,0	0,4
5	TI M2 S25 03 011	-	-	2,5	6,5	3,0	11,25	1,0	6,0	0,3
6	TI M2 S25 03 021	-	-	2,5	15,0	3,0	21,25	1,4	14,0	0,4
7	TI M2 S30 03 011	-	-	3,0	6,0	3,0	11,5	1,5	7,5	0,4
8	TI M2 S30 03 021	-	-	3,0	15,0	3,0	21,5	1,5	17,5	0,5
9	TI M2 S40 03 012	-	-	4,0	7,0	3,0	12,0	1,5	10,0	0,4
10	TI M2 S40 03 022	-	-	4,0	15,0	3,0	22,0	1,5	20,0	0,6
11	TI M2 S50 03 012	-	-	5,0	8,5	3,0	12,5	2,5	10,0	0,7
12	TI M2 S60 R3 013	-	-	6,0	9,0	3,0	13,0	2,5	10,0	0,9
13	TI M2 S80 03 015	-	-	8,0	11,0	3,0	15,0	2,5	11,0	1,5

**Thread** M2  
**Material** Stainless steel base and stem, silicon nitride ball



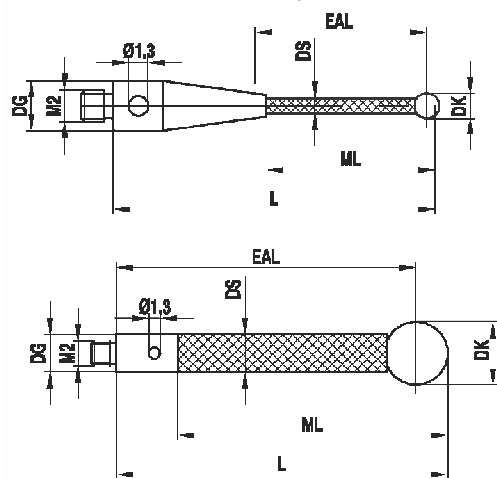
Peg mounted balls. Special designs on request.

All existing ball materials are available upon request for all styli and all thread sizes.

### Carbon fiber styli, thermostable

Pos.	itp Order No	analogue Renishaw	Short Desig.	DK	ML1 ML	DG D	L	DS1 DS	EAL B	Weight g	** ** *
1	TC M2 030 03 031	A-5003-3584	-	3,0	24,0	3,0	31,5	2,0	27,0	0,4	*****
2	TC M2 030 03 041	A-5003-3877	-	3,0	34,0	3,0	41,5	2,0	36,0	0,5	*****
3	TC M2 040 03 032	A-5003-4241	-	4,0	24,0	3,0	32,0	2,0	30,0	0,6	*****
4	TC M2 040 03 052	A-5003-2285	GF504	4,0	44,0	3,0	52,0	3,0	50,0	1,0	*****
5	TC M2 040 03 077	A-5003-4784	-	4,0	69,0	3,0	77,0	3,0	75,0	0,8	*****
6	TC M2 040 03 102	A-5003-2289	-	4,0	92,0	3,0	102,0	3,0	100,0	1,5	*****
7	TC M2 050 03 032	A-5003-4781	-	5,0	25,0	3,0	32,5	3,0	30,0	0,8	*****
8	TC M2 050 03 052	A-5003-2286	GF505	5,0	44,5	3,0	52,5	3,0	50,0	1,1	*****
9	TC M2 050 03 077	A-5003-4785	-	5,0	70,0	3,0	77,5	3,0	75,0	1,3	*****
10	TC M2 050 03 102	A-5003-2290	-	5,0	92,5	3,0	102,5	3,0	100,0	1,6	*****
11	TC M2 060 03 033	A-5003-4782	-	6,0	25,5	3,0	33,0	3,0	30,0	1,0	*****
12	TC M2 060 03 053	A-5003-2287	GF506	6,0	45,0	3,0	53,0	3,0	50,0	1,2	*****
13	TC M2 060 03 078	A-5003-4786	-	6,0	70,0	3,0	78,0	3,0	75,0	1,5	*****
14	TC M2 060 03 103	A-5003-2291	-	6,0	93,0	3,0	103,0	3,0	100,0	1,8	*****

**Thread** M2  
**Material** Stainless steel base, carbon fibre stem thermostable, ruby ball



Peg mounted balls. Thermostable carbon fibre, E-module of approximately 450 GPa. Special designs on request.

All existing ball materials are available upon request for all styli and all thread sizes.

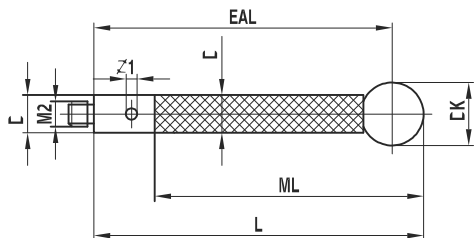
### Carbon fibre styli thermostable with silicon nitride ball

Pos.	itp Order No	analogue Renishaw	Short Desig.	DK	ML1 ML	DG D	L	DS1 DS	EAL B	Weight g
1	TC M2 S40 03 052	-	-	4,0	44,0	3,0	52,0	3,0	50,0	1,0
2	TC M2 S50 03 052	-	-	5,0	44,5	3,0	52,5	3,0	50,0	1,1
3	TC M2 S60 03 053	-	-	6,0	45,0	3,0	53,0	3,0	50,0	1,2

**Thread** M2  
**Material** Stainless steel base, carbon fibre stem thermostable, silicon nitride ball

Peg mounted balls. Thermostable carbon fibre, E-module of approximately 450 GPa. Special designs on request.

All existing ball materials are available upon request for all styli and all thread sizes.



### Star styli

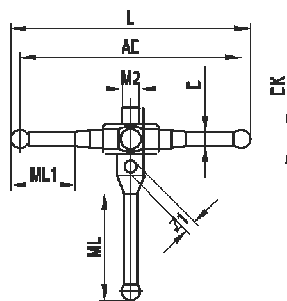
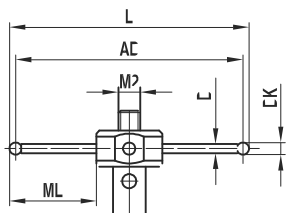
Pos.	itp Order No	analogue Renishaw	Short Desig.	DK	ML1 ML	DG D	L	DS1 DS	AD	Weight g
1	SI M2 005 05 010 *	A-5003-4011	-	0,5	2,75	5,0	10,5	0,3	10,0	0,7
2	SI M2 005 05 020 *	A-5003-4787	-	0,5	7,75	5,0	20,5	0,3	20,0	0,7
3	SI M2 010 05 011 *	A-5000-7811	PS28R	1,0	3,0	5,0	11,0	0,7	10,0	0,8
4	SI M2 010 05 021 *	A-5003-4788	-	1,0	8,0	5,0	21,0	0,7	20,0	0,9
5	SI M2 020 05 022 **	A-5000-7629	PS6R	2,0	4,5 / 13,5	5,5	22,0	1,4	20,0	1,3
6	SI M2 020 05 032 **	A-5000-3626	PS7R	2,0	9,5 / 13,5	5,5	32,0	1,4	30,0	1,8

**Thread** M2  
**Material** Stainless steel cube base and stems, ruby balls

Peg mounted balls. Special designs on request.

All existing ball materials are available upon request for all styli and all thread sizes.

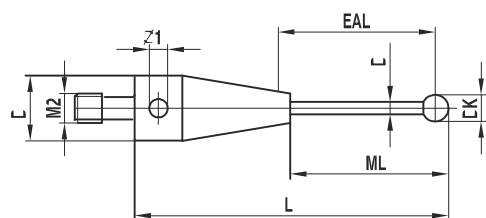
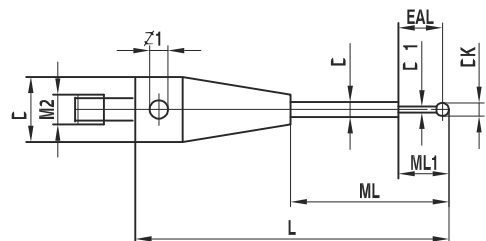
\* 4 arms; \*\* 5 arms



### Styli for star configuration

Pos.	itp Order No	analogue Renishaw	Short Desig.	DK	ML1 ML	DG D	L	DS1 DS	EAL B	Weight g
1	TH M2 005 03 019	A-5003-4790	-	0,5	7,0 / 11,5	3,0	19,0	0,4 / 0,7	7,0	0,4
2	TH M2 010 03 009	A-5003-4789	-	1,0	4,5	3,0	9,5	0,7	4,0	0,3
3	TH M2 010 03 019	A-5003-4791	-	1,0	11,5	3,0	19,0	0,7	11,0	0,5
4	TH M2 020 03 017	A-5000-3609	-	2,0	12,0	3,0	17,5	1,4	12,0	0,4

**Thread** M2  
**Material** Stainless steel base, carbide stem, ruby ball



Peg mounted balls. Special designs on request.

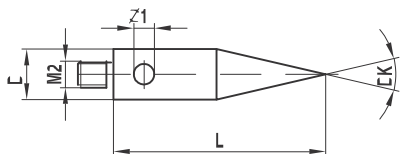
All existing ball materials are available upon request for all styli and all thread sizes.

### Pointer styli

Pos.	itp Order No	analogue Renishaw	Short Desig.	DK	ML1 ML	DG D	L	DS1 DS	EAL B	Weight g
1	II M2 030 03 015	M-5000-4150	PS20R	30°		3,0	15,0	3,0		0,7

**Thread** M2  
**Material** Stainless steel base and stem

Special designs on request.

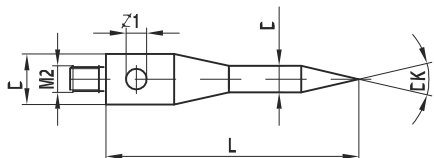


### Pointer styli

Pos.	itp Order No	analogue Renishaw	Short Desig.	DK	ML1 ML	DG D	L	DS1 DS	EAL B	Weight g
1	IH M2 030 03 010	A-5000-7813	PS36R	30°		3,0	10,0	1,5		1,0

**Thread** M2  
**Material** Stainless steel base, carbide stem

Special designs on request.

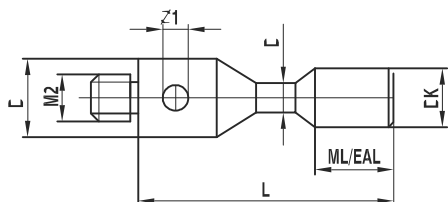


### Cylinder styli

Pos.	itp Order No	analogue Renishaw	Short Desig.	DK	ML1 ML	DG D	L	DS1 DS	EAL B	Weight g
1	ZH M2 015 03 011	M-5000-4152	PS18R	1,5	1,5	3,0	11,0	1,0	1,5	0,3
2	ZH M2 030 03 013	M-5000-4153	PS19R	3,0	4,0	3,0	13,0	1,5	4,0	0,6

**Thread** M2  
**Material** Stainless steel base, carbide stem and cylinder

Special designs on request.

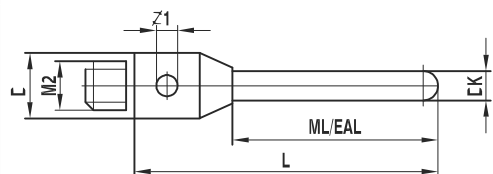


### Cylinder styli

Pos.	itp Order No	analogue Renishaw	Short Desig.	DK	ML1 ML	DG D	L	DS1 DS	EAL B	Weight g
1	ZH M2 015 03 016	A-5003-1219	-	1,5	8,3	3,0	15,8		8,3	0,7
2	ZH M2 020 03 016	A-5003-1228	-	2,0	8,5	3,0	16,0		8,5	0,8
3	ZH M2 020 03 040	A-5003-0074	PS7OR	2,0	32,0	3,0	40,0		32,0	2,0
4	ZH M2 020 03 A40	A-5003-3545	-	2,0	7,0	3,0	40,0		7,0	1,9
5	ZH M2 030 03 022	A-5003-1258	-	3,0	22,5	3,0	22,5		22,5	2,0

**Thread** M2  
**Material** Stainless steel base, carbide cylinder

Special designs on request.



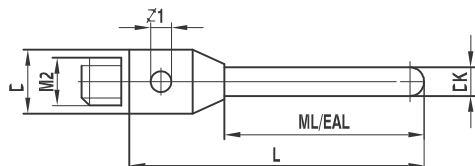


**Cylinder styli**

Pos.	itp Order No	analogue Renishaw	Short Desig.	DK	ML1 ML	DG D	L	DS1 DS	EAL B	Weight g
1	ZR M2 010 03 015	A-5000-8876	PS44R	1,0	8,0	3,0	15,0		8,0	0,3
2	ZR M2 015 03 015	A-5000-8877	PS45R	1,5	8,0	3,0	15,0		8,0	0,3

**Thread** M2  
**Material** Stainless steel base, ceramic cylinder

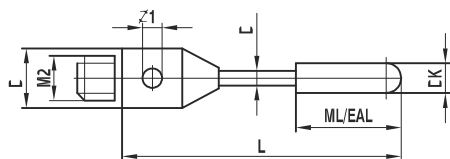
Special designs on request.


**Cylinder styli**

Pos.	itp Order No	analogue Renishaw	Short Desig.	DK	ML1 ML	DG D	L	DS1 DS	EAL B	Weight g
1	ZR M2 020 03 020	A-5000-7812	PS35R	2,0	7,0	3,0	20,0	1,5	7,0	0,5
2	ZR M2 040 03 022	A-5003-0073	PS69R	4,0	10,5	3,0	22,0	2,0	10,5	0,9

**Thread** M2  
**Material** Stainless steel base, carbide stem, ruby cylinder

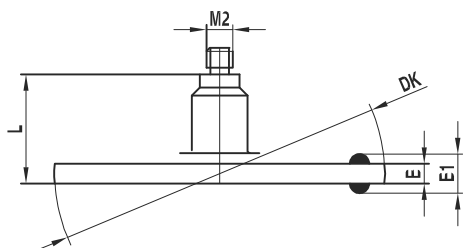
Special designs on request.


**Spherical disk styli with two hemispherical rubies**

Pos.	itp Order No	analogue Renishaw	Short Desig.	DK	ML1 ML	DG D	L	DS1 DS	B B1	Weight g
1	KI M2 015 18 M20	A-5000-7809	PS33R	18,0			8,25	3,0	1,5 / 2,5	3,0
2	KI M2 015 25 M20	A-5000-7810	PS34R	25,0			8,25	3,0	1,5 / 2,5	4,0
3	KI M2 022 18 M20	A-5000-3613	PS4R	18,0			3,7		2,2 / 3,0	2,7
4	KI M2 015 18 008	-	-	18,0			8,25	3,0	1,5/2,0	3,5
5	KI M2 030 18 004	-	-	18,0			4,0	3,0	3,0/4,0	3,8
6	KI M2 015 25 008	-	-	25,0			8,25	3,0	1,5/2,0	4,0
7	KI M2 030 25 004	-	-	25,0			4,0	3,0	3,0/4,0	4,5

**Thread** M2  
**Material** Stainless steel base, high-strength steel disk

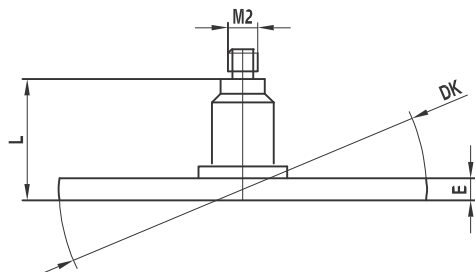
Special designs on request.



### Spherical disk styli

Pos.	itp Order No	analogue Renishaw	Short Desig.	DK	ML1 ML	DG D	L	DS1 DS	EAL B	Weight g
1	KI M2 030 25 M20	A-5000-4187	PS22R	25,0			4,0		3,0	11,4
2	KI M2 005 18 002	-	-	18,0		3,0	2,0		0,5	2,5
3	KI M2 008 18 002	-	-	18,0		3,0	2,0		0,8	2,6

**Thread** M2  
**Material** Stainless steel base, high-strength steel disk

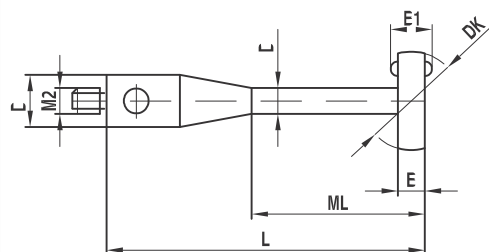


Special designs on request.

### Spherical disk styli with two hemispherical balls

Pos.	itp Order No	analogue Renishaw	Short Desig.	DK	ML1 ML	DG D	L	DS1 DS	B1 B	Weight g
1	KR M2 060 03 010	A-5000-3611	PS3R	6,0		3,0	10,5	2,0	2,0/1,2	0,6
2	KI M2 060 03 010	-	-	6,0	6,0	3,0	10,7	2,0	2,0/1,5	1,0

**Thread** M2  
**Material** Stainless steel base and stem, disk material see below chart

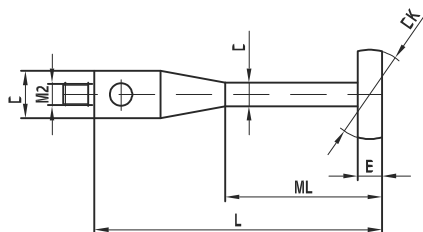


Special designs on request. Ball material: R = Ruby, I = High-Strength Steel

### Spherical disk styli

Pos.	itp Order No	analogue Renishaw	Short Desig.	DK	ML1 ML	DG D	L	DS1 DS	EAL B	Weight g
1	KI M2 050 03 015	-	-	5,0	11,0	3,0	15,0	1,5	0,5	0,8
2	KI M2 060 03 010/0,8	-	-	6,0	6,0	3,0	10,0	2,0	0,8	0,8
3	KI M2 080 03 020	-	-	8,0	14,0	3,0	20,0	2,0	0,5	1,1
4	KI M2 100 03 020	-	-	10,0	14,0	3,0	20,0	2,0	0,5	1,2
5	KI M2 100 03 020/0,8	-	-	10,0	14,0	3,0	20,0	2,0	0,8	1,2
6	KI M2 120 03 020	-	-	12,0	14,0	3,0	20,0	2,0	0,8	1,3

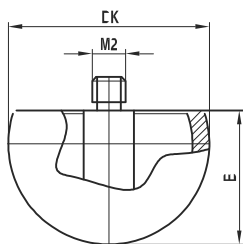
Special designs on request.



### Hollow ceramic hemisphere

Pos.	itp Order No	analogue Renishaw	Short Desig.	DK	ML1 ML	DG D	L	DS1 DS	EAL B	Weight g
1	HK M2 180 03 012	A-5000-3614	PS21R	18,0					12,0	3,3
2	HK M2 300 03 018	-	-	30,0					18,0	18,0

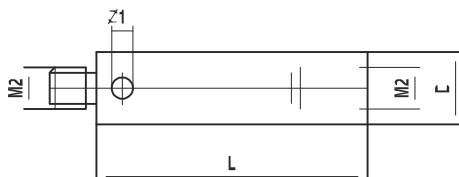
Special designs on request.



### Extension

Pos.	itp Order No	analogue Renishaw	Short Desig.	DK	ML1 ML	DG D	L	DS1 DS	EAL B	Weight g
1	VI M2 000 03 005	M-5000-7634	SE7			3,0	5,0			0,2
2	VI M2 000 03 010	M-5000-3647	SE4			3,0	10,0			0,4
3	VI M2 000 03 020	M-5000-3648	SE5			3,0	20,0			0,9
4	VI M2 000 03 030	M-5000-4162	SE6			3,0	30,0			1,4
5	VI M2 000 03 040	M-5000-7779	SE18			3,0	40,0			1,8

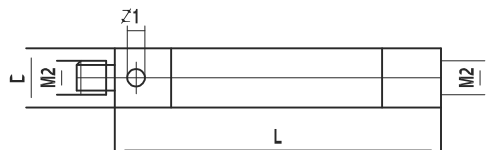
Special designs on request.



### Extension

**Thread** M2  
**Material** Ceramic, stainless steel ends

Pos.	itp Order No	analogue Renishaw	Short Desig.	DK	ML1 ML	DG D	L	DS1 DS	EAL B	Weight g
1	VK M2 000 03 030	A-5003-0070	SE26			3,0	30,0			1,0
2	VK M2 000 03 040	A-5003-0071	SE27			3,0	40,0			1,3
3	VK M2 000 03 050	A-5003-0072	SE28			3,0	50,0			1,5
4	VK M2 000 03 060	-	-			3,0	60,0			1,7

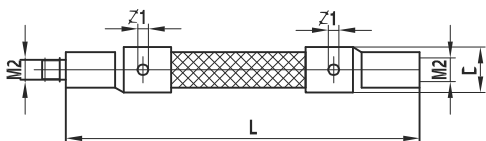


Special designs on request.

### Extension

**Thread** M2  
**Material** Black carbon fiber, stainless steel ends

Pos.	itp Order No	analogue Renishaw	Short Desig.	DK	ML1 ML	DG D	L	DS1 DS	EAL B	Weight g
1	VC M2 000 03 040	A-5003-2280	-			3,5	40,0			0,9
2	VC M2 000 03 050	A-5003-2281	-			3,5	50,0			1,0
3	VC M2 000 03 070	A-5003-2282	-			3,5	70,0			1,3
4	VC M2 000 03 090	A-5003-2283	-			3,5	90,0			1,5



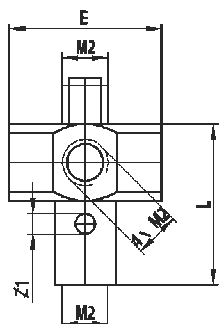
Special designs on request.

### 5-way holder, rotary

**Thread** M2  
**Material** Stainless steel

Pos.	itp Order No	analogue Renishaw	Short Desig.	DK	ML1 ML	DG D	L	DS1 DS	EAL B	Weight g
1	HI M2 000 07 008	A-5000-3627	SC2				7,5		7,0	1,2

Special designs on request.

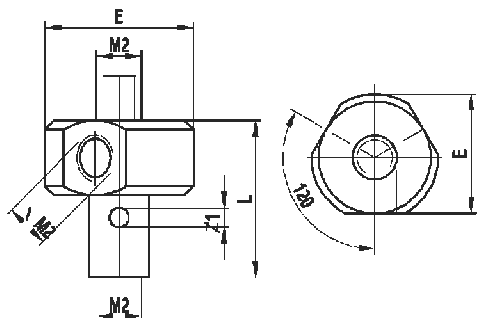


### 4-way holder, rotary

Pos.	itp Order No	analogue Renishaw	Short Desig.	DK	ML1 ML	DG D	L	DS1 DS	EAL B	Weight g
1	HI M2 000 07 007	A-5000-8395	SC6				7,5		7,5	1,2

**Thread** M2  
**Material** Stainless steel

Special designs on request.

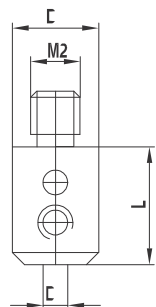


### Holder for styli

Pos.	itp Order No	analogue Renishaw	Short Desig.	DK	ML1 ML	DG D	L	DS1 DS	EAL B	Weight g
1	KH M2 010 06 008	-	-			6,0	8,0	1,0		1,0
2	KH M2 015 06 008	-	-			6,0	8,0	1,5		1,0
3	KH M2 020 06 008	-	-			6,0	8,0	2,0		1,0

**Thread** M2  
**Material** Stainless steel

Special designs on request.



**Material** Stainless steel

Special designs on request.